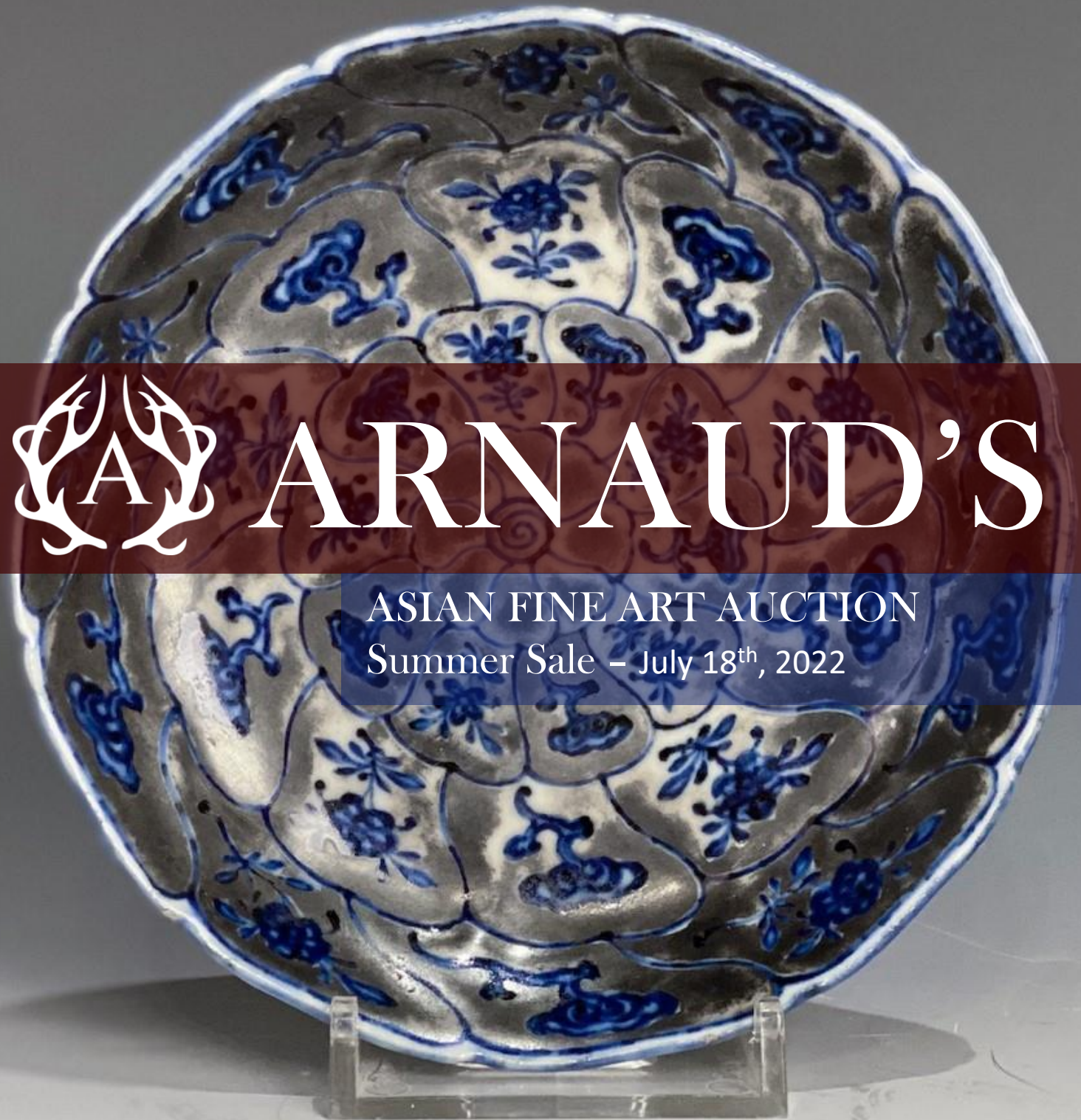




ARNAUD'S

ASIAN FINE ART AUCTION
Summer Sale – July 18th, 2022







ARNAUD'S GALLERY

Asian Fine Art Auction

Summer Asian Art Auction – SALE 104

June 18th, 2022

Doors Open 6:30 pm EST

Auction Starts 7:00 pm EST / Markham

Lots 001 – 204

To view our online catalogue and sign up to bid, please visit www.arnaudsgallery.com or the following sites:

- Liveauctioneers.com
- Arnaudsgallery.hibid.com
- 51bidlive.com
- Auctionhome.cn

Buyers intending to attend the live sale in-person are required to reserve in advance as seating is limited.

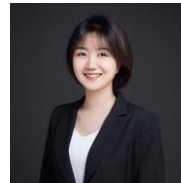
Preview Times

JUNE 15-17
11:00-18:00



JUNE 18
12:00-14:30

Contact Us



Manager of Asian Art Department
Iris Wu

asianart@arnaudsgallery.com

In-person preview by appointment only

Please book an appointment by scanning the QR code on the left or visiting [Arnaud's Bookings](#)

Government of Ontario COVID-19 Health and Safety measures are in effect.

Property Pick-Up Hours

By Appointment Only. Please book an appointment by scanning the QR code on the right or visiting [Arnaud's Bookings](#)

All property must be paid for within seven days and picked up within 14 days per our Conditions of Sale.



DYNASTIC CHRONOLOGY OF CHINA

Xia Dynasty	夏	2100 – 1600 BCE
Shang Dynasty	商	1600 – 1046 BCE
Western Zhou Dynasty	西周	1046 – 771 BCE
Eastern Zhou Dynasty	東周	770 – 256 BCE
Spring and Autumn Period	春秋	722 – 476 BCE
Warring States Period	戰國	475 – 221 BCE

IMPERIAL DYNASTIES

Qin Dynasty	秦	221 – 206 BCE
Western Han Dynasty	西漢	206 BCE – 9 CE
Xin Dynasty (Interregnum)	新	9 – 26
Eastern Han Dynasty	東漢	25 – 220
Three Kingdoms	三國	220 – 265
Western Jin Dynasty	西晉	265 – 317
Eastern Jin Dynasty	東晉	317 – 420
Southern & Northern Dynasties	南北朝	420 – 581
Sui Dynasty	隋	581 – 618
Tang Dynasty	唐	618 – 907
Five Dynasties & Ten Kingdoms	五代十國	907 – 960
Northern Song Dynasty	北宋	960 – 1127
Southern Song Dynasty	南宋	1127 – 1279
Liao Dynasty	遼	916 – 1125
Jin Dynasty	金	1115 – 1234
Yuan Dynasty	元	1271 – 1368
Ming Dynasty	明	1368 – 1644
Qing Dynasty	清	1644 – 1912
Republican Period	民國	1912 – 1949



SPECIAL ASIAN ART NOTICES

HOW TO REGISTER YOUR ACCOUNT

Before you can bid, you will need to create an account with Arnaud's. Once you have an account, whether you plan to bid in person or online, you can register for any sale in advance through your online accounts.

Documents needed to verify your identity when creating your account:

For Private individuals

A copy of:

- your passport or other government-issued photo ID; and
- proof of your residential address (such as a bank statement or utility bill) dated within the last three months.

For Organizations

A copy of formal documents evidencing:

- the organisation's incorporation
- its registered office and business address
- authorization for the individuals allowed to bid on behalf of the organisation, plus a copy of the government-issued photo ID for each authorised individual.

Financial references

You may also be asked for a financial reference and/or a deposit as a condition of allowing you to bid, particularly on extremely high value lots.

HOW TO BID

Online Auctions

We conduct the majority of our auctions online, offering selected works at attractive price points.

When registering to bid in an Online auction, you will be asked to register your credit card information. You will receive a link to pay online once your bid is successful. Otherwise, your credit card will not be automatically charged.

Please note:

- You cannot cancel a bid once it has been submitted. Each bid you place enters you into a binding contract with Arnaud's.
- If a bid is placed within five minutes of the closing time of a lot, five additional minutes will be added to the designated closing time for that lot. Please note that the extension of one lot's closing time does not affect other lots' closing times.

Live Auctions

Bid in Person

If you prefer to bid in person, you can register in advance by contacting Arnaud's Client Services. We encourage you to register at least 24 hours in advance of a sale to allow sufficient time for completing this process. To register for live auctions, you need to bring your photo ID and a proof of address to our office. If you prefer to register online, please contact Arnaud's Client Services via email or phone.

Telephone bidding

If you prefer to bid by telephone, you can register with an Arnaud's representative who will call you during the auction. We recommend that you consider leaving an 'emergency absentee bid' before an auction begins in case we are not able to reach you when the auction happens.

To register for a telephone bid, please contact Client Services for assistance.

Absentee Bid

If you are unable to attend an auction, you can simply register an absentee bid at least 24 hours prior to the sale with our Client Services office who will bid on the item for you. An absentee bid left in advance takes priority over the same bid amount in the room or on the telephones. If your bid exceeds the seller's minimum reserve, the auctioneer will try to win the item for you at the lowest price they can.

You may place an absentee bid via your online account, or by calling Client Services. You will need to fill out the Absentee Bid Form PDF and return it to Arnaud's Client Services.



001 CLAIR-DE-LUNE BLUE LINGZHI SHAPED BRUSH WASHER - BIXI | 民國 天藍釉靈芝洗

China, Republican Period, early 20th century
Dimensions: 5.2" (13.4 cm) W

Shaped as a large lingzhi sacred fungus with smaller fungus branching from the bottom, the bowl shallow and the whole glazed clair-de-lune blue lightening at the edges and rims and some details. The underside raised on 3 lingzhi shaped feet and with an impressed Qianlong 4-character mark.

PLEASE NOTE THIS LOT IS TO BE OFFERED WITHOUT RESERVE.

民國 天藍釉靈芝洗

Estimate \$200 - 300



002 PAIR OF LONGQUAN CELADON LOTUS-SHAPED BOWLS, 20TH CENTURY OR LATER | 20世紀或更早 龍泉蓮瓣型碗一對

China, 20th century or earlier
Dimensions: 3.3" (8.4cm) Dia, 1.6" (4cm) H

A pair of Longquan celadon-glazed lotus-shaped bowls. (2pcs)

PLEASE NOTE THIS LOT IS TO BE OFFERED WITHOUT RESERVE.

20世紀或更早 龍泉蓮瓣型碗一對

Estimate \$200 - 300



003 FAMILLE ROSE GILT-DECORATED VELVET-GROUND DRAGON BOWL, QIANLONG MARK, 20TH CENTURY | 粉彩軋道雙龍戲珠紋碗 乾隆款

China, 20th century
Dimensions: 5.6" (14.2cm) Dia, 2.6" (2.6cm) H

Six-character Qianlong mark in underglaze red. Famille rose velvet-ground bowl depicting two dragons playing with a ribboned ball. Decorated with straps of scrolling foliage patterns at the rim and the base.

PLEASE NOTE THIS LOT IS TO BE OFFERED WITHOUT RESERVE.

粉彩軋道雙龍戲珠紋碗 乾隆款

Estimate \$200 - 300



004 IRON-RED GLAZE GILT-DECORATED CONICAL BOWL, LATE QING DYNASTY | 晚清 礬紅描金鬥笠型小碗

China, Late Qing Dynasty
Dimensions: 4" (10.2cm) Dia, 1.3" (3.3cm) H

Conical bowl covered inside and out with an iron-red glaze with gilt decoration to the rim.

PLEASE NOTE THIS LOT IS TO BE OFFERED WITHOUT RESERVE.

晚清 礬紅描金鬥笠型小碗

Estimate \$200 - 300



005 PAIR OF WHITE-GLAZED HU-SHAPED TWIN-HANDLED VASES. 20TH CENTURY | 20世紀初 四方貫耳白釉瓶一對

China, 20th century
Dimensions: 4.3" (10.8cm) H (2)

A pair of white-glazed handled vases shaped after the archaic hu vessel. (2pcs)

PLEASE NOTE THIS LOT IS TO BE OFFERED WITHOUT RESERVE.

20世紀初 四方貫耳白釉瓶一對

Estimate \$200 - 300



007 PAIR OF FAMILLE ROSE AUSPICIOUS ANIMALS ZUN-SHAPED HANDLED VASES | 粉彩錦地神獸紋小鹿頭尊一對

China, 20th century
Dimensions: 5.3" (13.3cm) H (2)

A pair of famille rose polychrome-ground zun-shaped vases decorated with auspicious animals. (2pcs)

粉彩錦地神獸紋小鹿頭尊一對

Provenance: Taiwanese Family Collection in Toronto
來源：臺灣移民藏家

Estimate \$400 - 600



006 FAMILLE ROSE WATERPOT WITH VASE FLOWER AND ROCKERY, 20TH CENTURY | 民國 粉彩博古水盂

China, 20th century
Dimensions: 3.1" (7.9cm) H

Famille rose waterpot depicting a vase flower and literati rockery with inscriptions. Jingdezhen mark at the bottom.

民國 粉彩博古水盂

Estimate \$400 - 600



008 YELLOW-GLAZED INCISED DRAGON BOWL, KANGXI MARK | 清 黃釉刻龍紋碗 康熙款

Dimensions: 7.1" (18.1cm) Dia, 3.5" (8.9cm) H

Six-character Kangxi mark in underglaze blue. Yellow-glazed bowl with incised dragon motifs.

清 黃釉刻龍紋碗 康熙款

Estimate \$700 - 900



009 BLUE WHITE DRAGON BRUSHPOT WITH STAND, QING DYNASTY | 清青花龍紋筆筒 (帶底座)

China, Qing Dynasty, 19th century
Dimensions: 6.3" (15.9cm) Dia

Blue-and-white brushpot decorated with dragon and cloud patterns. Including a wood stand.

清青花龍紋筆筒 (帶底座)

Estimate \$700 - 900



010 CELADON-GLAZED TAOTIE ARCHAISTIC RELIEF-DECORATED FLASK | 20世紀青釉饕餮紋扁瓶 乾隆款

China, 20th century
Dimensions: 9.5"(24.13cm) H

Of flattened ovoid form, relief-decorated with a wide band of archaistic dragon scroll set between beaded borders and formed by two pairs of kui dragons confronted on each broad side and two pairs confronted on each of the openwork foliate flanges set on the narrow sides, with further narrow bands of archaistic dragons encircling the foot, lower body, and neck which is flanked by foliate scroll handles, all under a pale sea-green glaze shading to a paler color on the raised areas and to white on the beaded borders, the base similarly glazed.

Compare to a Rare Celadon-Glazed Archaistic Relief-Decorated Flask in Christie's New York Sale 28Mar2006 Lot 1760.
<https://www.christies.com/lot/lot-4680705>

20世紀青釉饕餮紋扁瓶 乾隆款

Provenance: Taiwanese Family Collection in Toronto
來源：臺灣移民藏家

Estimate \$2000 - 3000



011 BLUE WHITE DRAGON AND PHOENIX DISH, CHENGHUA MARK, 18TH CENTURY | 18世紀青花穿花龍鳳紋花口碟 大明成化年製款

China, 18th century
Dimensions: 8.9" (22.6cm) Dia

Blue and white dish with foliate rim decorated at the center of the interior with a roundel of a phoenix; the exterior decorated with dragon motifs and intertwining leaves and lotus flowers; Chenghua mark at the bottom.

18世紀青花穿花龍鳳紋花口碟 大明成化年製款

Estimate \$300 - 500



012 SET OF 3 BLUE WHITE BOTTLE VASE, DISH, AND BOWL, QING DYNASTY | 清 青花小瓶/碟/碗一組3件

China, Qing dynasty
 Dimensions:
 A: 6.9" (17.5cm) Dia.
 B: 4.5" (11.4cm) Dia.
 C: 4.4" (11.1cm) Dia.

Comprising a blue-and-white landscape baluster vase, a blue-and-white floral bowl with incised patterns, and a blue-and-white plate with underglaze blue seal. (3pcs)

清 青花小瓶/碟/碗一組3件

Estimate \$200 - 300



013 GROUP OF 6 VESSELS AND ORNAMENTS | 掐絲琺瑯瓷器玉雕作品6件一組

Dimensions:
 A: 12" (30.5cm) Dia. D: 4" (10.2cm) H
 B: 8.6" (21.8cm) Dia E: 1.8" (4.5cm) H
 C: 4.1" (10.5cm) H H: 1.8" (4.6cm) H

Comprising a famille rose figural plate, a cloisonné crane and floral plate, a mini-sized cloisonné floral baluster vase, a Yaozhou-ware globular vase, and a pair of jade carved auspicious animals. (6pcs)

粉彩美人圖盤
 掐絲琺瑯仙鶴牡丹盤
 掐絲琺瑯花卉紋小瓶
 耀州窯樹葉紋小罐
 玉雕瑞獸一對

掐絲琺瑯瓷器玉雕作品6件一組

Estimate \$200 - 300



014 SET OF 6 FAMILLE ROSE PHOENIX AND DRAGON BOWLS, REPUBLICAN PERIOD | 民國 粉彩龍鳳紋碗6只「江西袁斯如美出品」款

China, early 20th century, Republican period
 Dimensions:
 Largest piece: 4.9" (12.4cm) Dia. (2)
 Smallest piece: 4.3" (10.8cm) Dia. (2)

Set of 6 famille rose bowls decorated with phoenix and dragon motifs. Jiangxiyuansirumeichupin mark in underglaze red. (6pcs)

民國 粉彩龍鳳紋碗6只「江西袁斯如美出品」款

Estimate \$200 - 300



015 IRON-RED GLAZED BOTTLE VASE, 20TH CENTURY | 20世紀紅釉賞瓶

China, 20th century
Dimensions: 12.8" (32.4cm) H

Bottle vase with everted rim, body covered in iron-red glaze stopping at the bottom.

20世紀紅釉賞瓶

Estimate \$200 - 400



017 SET OF 2 FAMILLE ROSE BOTTLE VASES, 20TH CENTURY | 20世紀粉彩花瓶兩只

China, 20th century
Dimensions:
A: 14" (35.6cm) H B: 14.1" (35.9cm) H

Comprising two 20th century famille rose bottle vases, each with Qianlong mark at the bottom; one decorated with Taoist immortals and the other with flowers and birds. (2pcs)

20世紀粉彩花瓶兩只

Provenance: Taiwanese Family Collection in Toronto
來源：臺灣移民藏家

Estimate \$300 - 400



016 SET OF 5 FAMILLE ROSE PORCELAIN FRUITS AND VEGETABLES, LATE QING DYNASTY | 晚清粉彩陶瓷水果一組五件

China, late Qing Dynasty
Dimensions:
A: 4.5" (11.4cm) H C: 2" (5.1cm) H
B: 2" (5cm) H D: 2.3" (5.7cm) H
E: 1.6" (4.1cm) H

Set of 5 famille rose porcelain fruits and vegetables ornaments of various kinds. (5pcs)

晚清粉彩陶瓷水果一組五件

Provenance: Hong Kong Family Collection, Toronto, Canada
來源：多倫多香港移民家族舊藏

Estimate \$400 - 600



018 CIZHOU BLACK-GLAZED PILLOW | 磁州黑釉瓷枕

Dimensions: 9.6" (24.5cm) W, 4" (10.2cm) L, 5" (12.7cm) H
China, Ming dynasty or earlier

Cizhou ware pillow with a baby's face covered in black glaze stopping at the base.

磁州黑釉瓷枕

Estimate \$400 - 600

019 BLUE WHITE CRACKLE-GLAZED
'HUNDREDS ANTIQUES' BOTTLE
VASE, QING DYNASTY | 清 哥窯青花博古紋
雙耳包袱瓶



China, Qing Dynasty
Dimensions: 13.8" (34.9cm) H

Blue-and-white crackle-glazed bottle vase decorated with twin handles and foliate rim. Body decorated with motifs of 'hundreds antiques'.

清 哥窯青花博古紋雙耳包袱瓶

Estimate \$500 - 700

021 VERY RARE SHIWAN FLAMBE
TRANSMUTATIONAL GILT
SEATED STATUE OF GUANYIN, QING
DYNASTY | 清 紅釉石灣窯變漆金觀音坐像



China, late Qing Dynasty
Dimensions: 14.5"
(36.8cm) H

Seated statue of Guanyin with his body covered in flambe transmutational glaze and face decorated with gilt.

清 紅釉石灣窯變漆金觀音坐像

Provenance: Hong Kong Family Collection, Toronto, Canada

來源：多倫多香港移民家族舊藏

Estimate \$700 - 900



020 GUAN-TYPE CRACKLE BOWL,
QING DYNASTY | 清嘉慶 哥釉大碗

China, Qing Dynasty, Jiaqing period
Dimensions: 10.7" (27.3cm) Dia.

Porcelain serving bowl with greyish cream underglaze and imitation guan ware crackle pattern. Includes certificate of antique issued by China National Arts & Crafts IMP. & EXP. Corp., Guangzhou Branch.

清嘉慶 哥釉大碗

Estimate \$300 - 500



022 BLUE WHITE KENDI EWER, LATE
MING DYNASTY | 明末 青花仙鶴紋軍持

China, late Ming Dynasty
Dimensions: 5.4" (13.7cm) H

The ewer with a globular body and a mammiform spout is decorated with cranes and clouds.

明末 青花仙鶴紋軍持

Provenance: The Hatcher Collection, Christie's Amsterdam 12-13 June 1984.

來源：阿姆斯特丹佳士得Hatcher Collection, 1984.

Estimate \$500 - 700

023 SET OF 7 PORCELAIN PLATES, QING DYNASTY | 清 瓷盤一組七個

China, Qing Dynasty
Largest piece: 9.8" (25cm) Dia.
Smallest piece: 9" (22.9cm) Dia

Comprising a pair of Qing dynasty blue-and-white flower and phoenix plates, a pair of blue-and-white shou-character plates, a pair of Ge-type crackle glaze plates, and a blue-and-white shou-character plate. (7pcs)

清 瓷盤一組七個

Provenance: Taiwanese Family Collection in Toronto
來源: 臺灣移民藏家

Estimate \$300 - 500

清 青花牡丹鳳凰紋盤一對
清 青花萬壽紋盤一對
清 哥釉盤一對
清 青花壽紋盤一只



024 2 BRONZE CENSERS 19TH CENTURY, ONE WITH XUANDE MARK | 19世紀 銅爐兩只

China, 19th century
Dimensions:
A: 3.3" (8.3cm) H
B: 3.6" (9.2cm) Dia, 2.3" (5.7cm) H

Comprising a bronze tripod censer and a bronze censer with protruding footrim. (2pcs)

19世紀 銅爐兩只

Provenance: Collection Taoka Bunsen, Shizuoka, Japan.
來源: 日本靜岡Taoka Bunsen舊藏

Estimate \$300 - 500



025 TIBETAN SILVER INLAID BRONZE PARFUMIER, TOGETHER WITH BRONZE TIBETAN BUDDHIST MASK | 西藏 嵌銀銅香筒及銅佛面具2件

Dimensions:
A: 12.5" (32 cm) H
B: 11" (28 cm) H

A cylindrical parfumier carved with relief of Tibetan Buddhist elements and coral beads; together with a Tibetan Buddhist face mask decorated with lotus flowers and skulls. (2pcs)

西藏 嵌銀銅香筒及銅佛面具2件

Estimate \$200 - 300



026 SEATED MANJUSRI BODDHISATTVA IN BRONZE, 19TH CENTURY | 清十九世紀 銅文殊菩薩坐像

China, Qing Dynasty, 19th century
Diameter: 4.3" (11cm) H

A bronze Manjusri seated in vajrasana on a double lotus base, with serene expression, hair combed in a chignon with some tresses falling over the shoulders, wearing a dhoti, left hand in dhyanamudra (meditation) and left hand raised holding a missing sword.

清十九世紀 銅文殊菩薩坐像

Estimate \$500 - 800



027 SEATED AMITAYUS IN BRONZE, TIBET | 西藏 銅坐蓮無量光佛像

Tibet, 18th century
Dimensions: 5.6" (14.3cm) H

Seated in vajrasana on a lotus base, his hands holding the kalasha, his face with serene expression.

西藏 銅坐蓮無量光佛像

Estimate \$700 - 900

028 UNUSUAL GILT BRONZE FIGURE OF THE MAHASIDDHA YOGI VIRUPA | 清 銅鎏金持法器大成立佛像

Tibeto-Chinese, 19th century
Dimensions: 6" (15 cm) H



Standing in Alidhasana to the right on a single lotus base, clad only in a tiger skin loin cloth, with a serpent necklace, bracelets, armlets and anklets, his large head with prodigious curly hair, the right hand raised and pointing in the standard iconography of the Mahasiddha, and the left lowered possibly originally grasping an object or emblem. Earrings with hardstone cabochons. The great teacher, Virupa / Virupaksa was a 7th – 8th century eastern Indian yogi and the source of a number of important teaching cycles of Tibetan Buddhism, largely held in the Sakya monastic tradition. His signature full head of curly hair is unmistakable, he is normally rotund but seated in a yoga position, always with right hand raised in a teaching mudra. It is quite rare to depict him standing although early images of the 13th and 14th century at times show him thus. This may be a syncretic form – perhaps connected with Mahakala, Acala or Vajrapani who normally assume this pose, a connection which is also suggested by the serpent necklace.

清 銅鎏金持法器大成立佛像

Estimate \$1200 - 1500

029 PAIR OF CLOISONNE MYSTERIOUS-ANIMAL-SHAPED CENSERS, QING DYNASTY |
20世紀早期 掐絲琺瑯瑞獸一對

China, Qing Dynasty
Dimensions: 9.2"(23.4cm) H (2)

A pair of cloisonné censors made in the shape of a mysterious animal with a horse's head and a duck's body. (2pcs)

20世紀早期 掐絲琺瑯瑞獸一對

Provenance: Sotheby's Bennett Stickers.

來源：蘇富比Bennett標籤

Estimate \$1000 - 1500



030 BRONZE MINIATURE GUAN FORM CENSER AND STAND, MING DYNASTY |
明 銅仿古紋爐連座



China, Ming Dynasty, 17th century
Dimensions: 5" (12.7cm) Dia.

The body of guan jar form with large Han-style taotie handles, rounded shoulders and a wide unadorned mouth and tapering to a narrow foot and hidden footring. The underside with a rare 4 character studio mark in seal script – pingshan jushi. The stand original, the censer sitting firmly in place, cast with three lingzhi and cloud feet.

明 銅仿古紋爐連座

Estimate \$3000 - 5000



031 GILT COPPER FIGURE OF ACALA | 西藏 銅鑲金不動明王像

Tibet, 15th – 16th century
Dimensions: 5" (12.8 cm) W

Standing in martial pose (alidhasana) to the right with right hand raising a vajra-hilted sword, the left hand raised in teaching gesture (vitarkamudra). Wearing an animal skin dhoti, armllets, necklaces and a large tiara some set with green stone cabochons, and large sashes and sacred scarves forming a mandorla. Set on an oblong flat base with two cast tangs. The stand 20th century in brass. The heavy set of the body, wide yet benign face and the scarves forming the mandorla behind the head are strongly suggestive of an early dating for this figure of the Vidhyaraja (guardian king of light) and dharmapala (guardian of the Buddhist Dharma) Acala / Achala. Compare with an un-gilt bronze figure of Achala, dated to 14th century with wider mandorla created by the sacred scarves, slightly larger at 6 ½ in. (16.5 cm.), with integral base of crushed figures on a lotus base, in Christie's New York, sale 21SEP2021, Lot 401.

<https://www.christies.com/en/lot/lot-6334294>



西藏 銅鑲金不動明王像

Estimate \$10000 - 12000



032 GILT BRONZE STATUE OF BUDDHA, MING DYNASTY | 明 銅鑲金佛像

China, Ming Dynasty
Dimensions: 9.8" (24.8cm) H

Bronze statue of Buddha seated on a double-lotus base, his hands in vitarka mudra, his face depicted with elongated eyebrows and serene facial expression, the hair in tight curls over the ushnisha.

Ex Estate of Mary Farkas (acquired before 1970), East Chicago, Indiana, thence by descent
Ex Collection of Ms. Donna Kostecki, Crown Point, Indiana
Ex Chicago Asian Art Collection (2005-2019)

明 銅鑲金佛像

Estimate \$7000 - 9000

033 **IVORY CARVED MAITREYA
ORNAMENT TOGETHER WITH
NUT CARVED BOAT ORNAMENT | 牙雕彌勒
佛擺件及核桃雕船型巧雕烏篷船漁樂圖**

China, 20th century
Dimensions: 2.1" (5.4cm) H

Comprising an ivory-carved figurine of Maitreya; together with a nut-carved boat ornament with a wood stand.

PLEASE NOTE THIS LOT IS TO BE OFFERED WITHOUT RESERVE.

牙雕彌勒佛擺件及核桃雕船型巧雕烏篷船漁樂圖

Estimate \$200 - 300



034 **IVORY CARVED STATUE OF
PANDA AND BAMBOOS WITH
WOODEN STAND | 牙雕熊貓竹子圖**

China
Dimensions: 12.5" (31.8cm) H

Wood carved statue of mountain with ivory carved pandas and bamboos.

PLEASE NOTE THIS LOT IS TO BE OFFERED WITHOUT RESERVE.

牙雕熊貓竹子圖

Estimate \$200 - 300



035 **PAIR OF CARVED IVORY POLYCHROME
OKIMONO OF A MAN HOLDING A LAMP,
20TH CENTURY | 20世紀 牙雕加彩人物雕塑一對**

Hong Kong, 20th century
Dimensions:
A: 3" (7.6cm) H
B: 2.5" (6.4cm) H

A pair of carved ivory polychrome figurines of a hunchbacked man in traditional clothing, holding a lamp decorated with fu-character. (2pcs)

20世紀 牙雕加彩人物雕塑一對

Estimate \$200 - 300





036 PAIR OF CARVED IVORY POLYCHROME OKIMONO OF SEATED MAN, 20TH CENTURY | 20世紀 牙雕加彩人物雕塑一對

Hong Kong, 20th century

Dimensions:

A: 1.5" (3.8cm) H

B: 1.75" (4.5cm) H

A pair of carved ivory polychrome figurines of seated men in traditional clothing. (2pcs)

20世紀 牙雕加彩人物雕塑一對

Estimate \$200 - 300



037 SET OF 12 IVORY CARVED JEWELRY | 牙雕首飾一組12件

Dimensions:

Largest piece: 1" (2.5cm) Dia.

Smallest piece: 1.9" (4.8cm) L

A set of 12 carved ivory jewelry pieces. (12pcs)

牙雕首飾一組12件

Estimate \$100 - 200

038 IVORY CARVED OPENWORK LAMP STAND | 象牙鏤雕燈座



China, 20th century
Dimensions: 11.8" (29.9cm) H

Ivory carved electric lamp stand with openwork dragon decoration.

象牙鏤雕燈座

Estimate \$200 - 300

039 IVORY CARVED STATUE OF MULAN, 20TH CENTURY | 20世紀 牙雕花木蘭像



China, 20th century
Dimensions: 7.3" (18.4cm) H

Ivory carved statue of Mulan riding on a horse, holding a spear on her left hand.

20世紀 牙雕花木蘭像

Estimate \$200 - 300



040 SET OF 2 IVORY CARVED STATUE OF A FARMER AND A FISHERMAN | 日本 牙雕人像2件

Japan

Dimensions:

A: 6" (15.2cm) H

B: 5" (12.7cm) H

Comprising an ivory carved statue of a man holding a sickle with firewood on his back; together with an ivory carved statue depicting a farmer. (2pcs)

日本 牙雕人像2件

Estimate \$400 - 600



041 IVORY CARVED FIGURINES OF EMPEROR AND EMPRESS WITH STANDS | 牙雕皇帝皇后立像一對 大清款 (帶底座)

China, Qing Dynasty

Dimensions:

A: 6.3" (15.9cm) H

B: 6" (15.2cm) H

A pair of ivory carved figurines depicting the emperor and empress of the Qing dynasty. Including 2 wooden stands. (2pcs)

牙雕皇帝皇后立像一對 大清款 (帶底座)

Estimate \$700 - 900

042 IVORY CARVED FIGURINE OF SHOULAO | 牙雕壽老童子像

Dimensions: 15" (38.1cm) H

Ivory carving of Shoulao holding a pipe and a cigarette holder in his right hand and a scepter with fishes and flowers attached to the top.

牙雕壽老童子像

Estimate \$700 - 900



043 **IVORY CARVED 'BUDDHIST LION' GROUP TRIPOD CENSER, 20TH CENTURY |**
20世紀 牙雕少獅太獅三足爐 乾隆款

China, 20th century
12" (30.5 cm) H

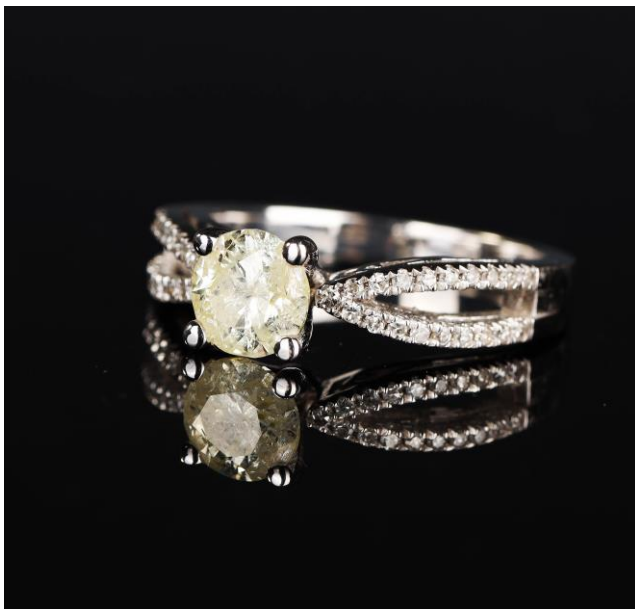
Ivory-carved tripod censer decorated with the 'Buddhist Lion' group on the lid, neck decorated with openwork foliage and four lion-headed rings, body decorated with carved dragon and cloud patterns, attached to two spreading handles and three beast-like feet. Two-character Qianlong mark.

20世紀 牙雕少獅太獅三足爐
乾隆款

Estimate \$1500 - 1800



044 **STAMPED 14K WHITE GOLD DIAMOND RING (1CT) |**
14K金鑲鑽石戒指 (主鑽1CT) 帶證書



Dimensions: 0.9" (2.2cm) Dia.

Including a certificate of appraisal.

14K金鑲鑽石戒指 (主鑽1ct) 帶證書

Estimate \$3000 - 5000



045 WOOD CARVED FIGURE STATUE, 20TH CENTURY | 20世紀 木雕文革題材人物立像



China, 20th century
Dimensions: 12.2"
(31cm) H

Wood carved statue depicting a fisherman holding a basket of fish on his chest, with a bucket at his feet.

PLEASE NOTE THIS LOT IS TO BE OFFERED WITHOUT RESERVE.

20世紀 木雕文革題材人物立像

Estimate \$100 - 200

047 HUALI WOOD CARVED JADE INLAID JEWELRY BOX | 花梨木嵌玉首飾盒



China
Dimensions: 7.5"
(19.1cm) H, 10.3"
(26cm) L

Huali wood carved jewelry box decorated with openwork white jade plaques.

PLEASE NOTE THIS LOT IS TO BE OFFERED WITHOUT RESERVE.

花梨木嵌玉首飾盒

Estimate \$200 - 300



046 37 PIECES OF SCHOLAR'S STONES | 賞石一組 37件

China
Dimensions: N/A

Comprising 37 pieces of scholar's stones with three wood stands. (37pcs)

PLEASE NOTE THIS LOT IS TO BE OFFERED WITHOUT RESERVE.

賞石一組 37件

Estimate \$400 - 600



048 CORAL BOTTLE TOGETHER WITH CHICKEN BLOOD SEAL | 珊瑚小瓶和雞血石印章

Dimensions:
2.8" (7cm) H;
1.9" (4.8cm) H

Comprising one small coral bottle and one chicken blood seal with an uncarved face. (2pcs)

PLEASE NOTE THIS LOT IS TO BE OFFERED WITHOUT RESERVE.

珊瑚小瓶和雞血石印章

Estimate \$300 - 500

049 WOOD CARVED FIGURINE OF DAMO | 木雕達摩像



China, Late Qing Dynasty
Dimensions: 19.3" (48.9cm) H

Wood carved statue of Damo.

木雕達摩像

Estimate \$100 - 200

051 CARVED WOOD TABLE STAND | 木製小案臺

China, Late Qing Dynasty
Dimensions: 33.3" (84.5cm) W, 9" (22.9cm) L, 11.8" (29.9cm) H

Low table stand with three drawers, with carved apron in cloud motifs

木製小案臺

Estimate \$100 - 200



050 FOUR-LEAF POLYCHROME IVORY-INLAID HARDWOOD TABLE SCREEN | 四大美人圖象牙片屏風 四片

China
Dimensions: 13.3" (33.7cm) W, 8.5" (21.6cm) H

Four-leaf polychrome ivory-inlaid hardwood table depicting Four Beauties of ancient China. (4pcs)

四大美人圖象牙片屏風 四片

Note: Certain objects may contain material which may be subject to import/export regulation.

Estimate \$100 - 200



052 PUMPKIN-SHAPED INKSTONE, TUIGENGTANG MARK | 圓形石硯帶南瓜型木盒 退耕堂主人藏款

China
Dimensions: 6" (15.2cm) Dia, 2.5" (6.4cm) H

Pumpkin-shaped inkstone with wood stand, Tuigengtang zhurencang mark.

圓形石硯帶南瓜型木盒 退耕堂主人藏款

Provenance: Taiwanese Family Collection in Toronto
來源：臺灣移民藏家

Estimate \$200 - 300





053 SILVER FLORAL HANDLED TEAPOT | 梅蘭竹菊開光提梁銀壺

Dimensions:

A: 7" (17.8cm) H (handle included)

B: 4.4" (11.1cm) H

Silver handled teapot decorated with panels with plum, orchid, bamboo and chrysanthemum.

梅蘭竹菊開光提梁銀壺

Provenance: Taiwanese Family Collection in Toronto
來源：臺灣移民藏家

Estimate \$200 - 300



054 STONE CARVED ROOSTER GROUP TOGETHER WITH LACQUER MOTHER-OF-PEARL INLAID SCREEN | 石刻公雞圖及嵌螺鈿漆屏風（帶底）一組2件

China

Dimensions:

A: 6.3" (15.9cm) H

B: 18" (45.7cm) W, 14" (35.6cm) H

Comprising a stone carved statue group of two roosters; together with a four-leaf lacquer screen decorated with mother-of-pearl. (2pcs)

石刻公雞圖及嵌螺鈿漆屏風（帶底）一組2件

Estimate \$200 - 300

055 SHOUSHAN STONE CARVED SEAL, SIGNED DENG SHIRU | 鄧石如款壽山石印章

China, Qing dynasty

Dimensions: 2" (5.1cm) W, 2" (5.1cm) L, 1.6" (4.1cm) H

鄧石如款壽山石印章

Note: 鄧石如（1743—1805年），初名琰，因避清仁宗諱，遂以字行，更字頑伯，號完白山人、笈遊道人等，懷寧（今安徽安慶）人。清代乾、嘉時期著名碑學大師。少好刻石，弱冠謁江寧梅鏐，梅家多藏金石善本，盡出與石如，使專摹習。客梅氏八年，學既成，又客於兩江總督畢沅幕府。三年後辭歸。工書法、篆刻。書工各體，以篆、隸為最精，頗得古法，兼融各家之長，形成獨特風格。清李兆洛謂其書「真氣彌滿，楷則俱備，其手之所運，心之所追，絕去時俗，同符古初，津梁後生，一代宗仰。」對清代中、後期書壇有巨大影響。著有《完白山人篆刻偶存》等書行世，《清史稿》有傳。

Estimate \$500 - 700





056 SET OF 7 IVORY-CARVED JEWELRY AND SNUFF BOTTLES | 牙雕首飾及鼻煙壺一組7件

Dimensions:
Largest piece: 4" (10.2cm) Dia.;
Smallest piece: 3" (7.6cm) H

Comprising an ivory-carved ring, an ivory-carved dicing board, an ivory-carved bangle, an ivory-carved necklace, and three ivory-decorated snuff bottles. (7pcs)

牙雕扳指1個 鼻煙壺3個 手鐲1個 項鏈1串 桌遊板1個

牙雕首飾及鼻煙壺一組7件

Note: Certain objects may contain material which may be subject to import/export regulation.

Estimate \$300 - 500



057 BRONZE LACQUER-DECORATED BOX TOGETHER WITH BLUE WHITE WATERPOT, QING DYNASTY | 清文房用雕漆銅盒及青花水盂2件

China
Dimensions:
A: 3.3" (8.3cm) W, 2.3" (5.7cm) L, 1.5" (3.8cm) H;
B: 4" (10.2cm) H

Comprising a bronze lacquer-decorated figural jewelry box; together with a blue-and-white waterpot decorated with geometric and foliage patterns. (2pcs)

清文房用雕漆銅盒及青花水盂2件

Estimate \$500 - 700

058 WOOD CARVED OPENWORK FOUR-LEAF SCREEN | 20世紀 黃楊木鏤雕庭院仕女圖四葉屏風



China, 20th century
Dimensions: 75" (190.5cm) H, 77.5" (196.9cm) W

A four-leaf carved wooden screen depicting a narrative scene of goddesses in the garden.

20世紀 黃楊木鏤雕庭院仕女圖四葉屏風

Estimate \$300 - 500

059 RED LACQUER CARVED GILT-DECORATED FIGURAL SCREEN | 紅漆雕花人物故事描金屏風



China, 19-20th century
Dimensions: 64" (162.5cm) H, 64" (162.5) W

Red lacquer carved gilt-decorated figural screen depicting scholars and attendants in the garden.

紅漆雕花人物故事描金屏風

Estimate \$500 - 700

060 HUANGHUALI BOX WITH HINGED COVER | 清 黃花梨帖盒

China, Qing Dynasty
Dimensions: 12.9" (32.8cm) W, 6.4" (16.2cm) L

Huanghuali wood box with hinged cover.

清 黃花梨帖盒

Provenance: Private Collection, United States
來源：美國私人收藏

Estimate \$700 - 900



061 JADE AND HARDWOOD INLAID 'ANTIQUES AND AUSPICIOUS OBJECTS' HANGING SCREEN, QING DYNASTY | 清 硬木嵌百寶圖掛屏

China, Qing Dynasty
Dimensions: 27" (68.6cm) L, 31" (78.7cm) W

Decorated with finely carved jade, ivory, coral, bronze, agate inlays, depicting various antiques and auspicious objects including a jade bi, ancient coinages, a fu-character pendant, a shou-character pendant, a ram, a xi-character vase, a dragon, all within a hardwood frame.

For similar style compare with a pair of large hardwood inlaid rectangular screens and stands, late Qing dynasty, in Bonhams Hong Kong Sale 26MAY2014, Lot 246.

<https://www.bonhams.com/auctions/21882/lot/246/>

Provenance: Private Collection, Montreal, Canada
來源：蒙特利爾重要藏家

清 硬木嵌百寶圖掛屏

Note: Certain objects may contain material which may be subject to import/export regulation.

Estimate \$20000 - 30000





062 PAIR OF RECTANGULAR JADEITE PENDANTS TOGETHER WITH JADEITE RING PENDANT | 翡翠方牌掛墜一對和平安扣一個

Dimensions:
A: 0.6" (1.6cm) W, 0.9" (2.4cm) H, Rectangular Pendants
B: 0.8" (1.9cm) Dia, Ring Pendant

Comprising a pair of rectangular jadeite pendants and a jadeite auspicious ring pendant. (3pcs)

PLEASE NOTE THIS LOT IS TO BE OFFERED WITHOUT RESERVE.

翡翠方牌掛墜一對和平安扣一個

Estimate \$100 - 200

064 PAIR OF JADEITE BEADS TOGETHER WITH CARVED JADEITE ROUND PLAQUE | 翡翠福祿壽玉牌一個和吊墜一對



Dimensions:
A: 2" (5.4cm) Dia
B: 0.9" (2.2cm) Dia (2)

Comprising a pair of carved jadeite bead pendants and a jadeite round plaque decorated with bats and auspicious symbols. (3pcs)

PLEASE NOTE THIS LOT IS TO BE OFFERED WITHOUT RESERVE.

翡翠福祿壽玉牌一個和吊墜一對

Estimate \$100 - 200



063 3 CARVED JADEITE PENDANTS | 翡翠掛件三個

Dimensions:
A: 1.5" (3.8cm) H
B: 1.7" (4.4cm) H (2)

Three finely carved jadeite pendants. (3pcs)

PLEASE NOTE THIS LOT IS TO BE OFFERED WITHOUT RESERVE.

翡翠掛件三個

Estimate \$100 - 200

065 3 JADEITE PENDANTS | 翡翠掛墜三個

Dimensions:
A: 0.6" (1.6cm) Dia B: 1.9" (4.8cm) H
C: 1.1" (3cm) H

Comprising a jadeite pendant, a jadeite pendant decorated with a nine-tailed fox, and a jadeite pendant carved as double-fish. (3pcs)

PLEASE NOTE THIS LOT IS TO BE OFFERED WITHOUT RESERVE.

翡翠掛墜三個

Estimate \$200 - 300





066 JADEITE PENDANT | 翡翠吊墜一個

Dimensions: 1.5" (3.8cm) H

Jadeite carved pendant.

PLEASE NOTE THIS LOT IS TO BE OFFERED WITHOUT RESERVE.

翡翠吊墜一個

Estimate \$200 - 300



068 THUMB RINGS AND STAND | 玉扳指及扳指座一組四件

Dimensions:

A: 4" (10.2cm) L;
 B: 1.4" (3.5cm) Dia.;
 C: 1.3" (3.2cm) Dia.;
 D: 1.1" (2.9cm) Dia.

Comprising three thumb rings in nephrite jade, agate and Peking glass and a stand. (4pcs)

PLEASE NOTE THIS LOT IS TO BE OFFERED WITHOUT RESERVE.

玉扳指及扳指座一組四件

Estimate \$200 - 300



067 SET OF 2 JADE CARVED MONKEY ORNAMENTS | 玉雕把件一對 (猴、壽桃)

China

Dimensions: A: 2.6" (6.6cm) L; B: 2.5" (6.4cm) L

Comprising one jade carved monkey ornament; together with one jade carved monkey with two peaches. (2pcs)

PLEASE NOTE THIS LOT IS TO BE OFFERED WITHOUT RESERVE.

玉雕把件一對 (猴、壽桃)

Estimate \$200 - 300



069 JADE CARVED PUMPKIN SHAPED SNUFF BOTTLE | 玉雕南瓜型鼻煙壺

Dimensions: 2" (5.1cm) H

Jade carved pumpkin-shaped snuff bottle. Missing the lid.

PLEASE NOTE THIS LOT IS TO BE OFFERED WITHOUT RESERVE.

玉雕南瓜型鼻煙壺

Estimate \$800 - 1200

070 **JADEITE MAITREYA PENDANT NECKLACE WITH SILVER CHAIN | 銀鏈翡翠彌勒佛掛件**

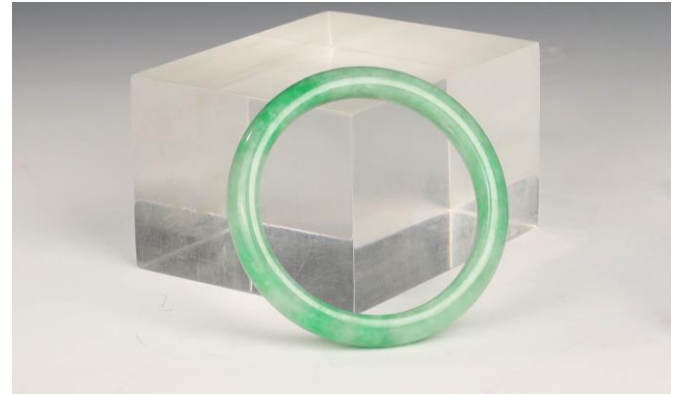


Dimensions: 2" (5.1 cm) W

Jadeite pendant necklace carved as Maitreya Buddha, on a silver chain.

銀鏈翡翠彌勒佛掛件

Estimate \$200 - 300



071 **JADEITE BANGLE | 翡翠手鐲 (帶原香港發票)**

Dimensions: 2.7" (6.9cm) Outer Dia, 2.2" (5.6cm) Inner Dia

Jadeite bangle, with original invoice from Hong Kong.

翡翠手鐲 (帶原香港發票)

Estimate \$300 - 500

072 **AMBER BEAD NECKLACE | 蜜蠟項鍊**

Dimensions: 88g

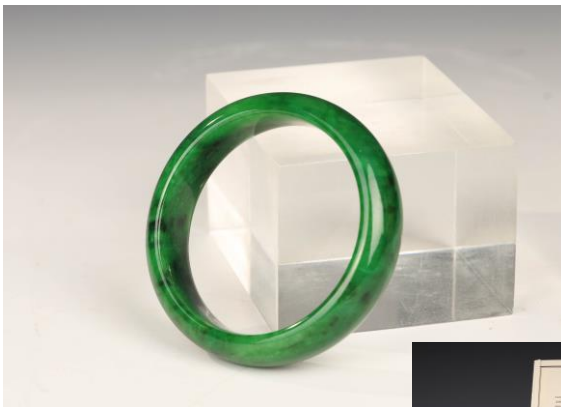
Comprising 52 amber beads of various sizes.

蜜蠟項鍊

Estimate \$1500 - 2000



073 **JADEITE BANGLE | 翡翠手鐲 (帶證書)**



Dimensions: 3" (7.6cm) Outer Dia, 2.4" (6.1 cm) Inner Dia

Jadeite bangle. Including a certificate of appraisal.

翡翠手鐲 (帶證書)

Provenance: Family of the former CEO of Toyota Canada
來源: 前豐田加拿大總裁家族舊藏

Estimate \$1500 - 2000

074 CELADON AND RUSSET JADE CARVED 'BUDDHIST LION' GROUP WITH STAND | 青白玉雕太獅少獅臥像（帶座）

China

Dimensions: 6" (15.2cm) L, 3.7" (9.5cm) H

Celadon and russet jade carved group of a Buddhist lion holding in its jaws one trailing end of the ribbon tied around the brocade ball clutched between its front paws, and with its head turned to look at the cub lying on top of its back.

Compare to a Ming-style Celadon and Russet Jade Group 'Buddhist Lion', Qing dynasty, in Sotheby's New York, sale 14SEPT2019 Lot 1233.

<https://www.sothebys.com/en/auctions/ecatalogue/2019/saturday-at-sothebys-n10115/lot.1233.html>

Provenance: Private Collection in Montreal
来源：蒙特利尔重要藏家



青白玉雕太獅少獅臥像（帶座）

Estimate \$5000 - 7000



075 BLUE WHITE FLORAL BOTTLE VASE TOGETHER WITH FAMILLE ROSE PEACH BOWL, 20TH CENTURY | 20世紀青花纏枝蓮紋賞瓶及粉彩壽桃紋碗 敬畏堂製款

China, 20th century

Dimensions:

A: 9.9" (25.1cm) H

B: 4.8" (12.1cm) Dia, 2.4" (6.1cm) H

Comprising a blue and white bottle vase decorated with floral patterns and scrolling foliage, and a famille rose bowl decorated with peaches and bats, four-character Jingweitang mark. (2pcs)

PLEASE NOTE THIS LOT IS TO BE OFFERED WITHOUT RESERVE.

20世紀 青花纏枝蓮紋賞瓶及粉彩壽桃紋碗 敬畏堂製款

Estimate \$200 - 300

076 FAMILLE ROSE BOTTLE VASE WITH SWALLOW DECORATIONS, REPUBLICAN PERIOD, QIANLONG MARK | 20世紀 粉彩枇杷春燕瓶 乾隆款

China, Republican period

Dimensions: 11" (27.9cm) H

Six-character Qianlong mark in underglaze red. Famille rose bottle vase decorated with swallows and loquat branches and fruits. Lengthy scripts at the reverse.

PLEASE NOTE THIS LOT IS TO BE OFFERED WITHOUT RESERVE.

20世紀 粉彩枇杷春燕瓶 乾隆款

Estimate \$200 - 300



077 SET OF 3 COMMEMORATIVE PLATES, REPUBLICAN PERIOD | 民國紀念盤一組三只

China, Republican Period
Dimensions: 7.8" (19.7cm) Dia (3)

Set of 3 commemorative plates decorated with two crossed flags and scripts with calligraphy indicating that it was originally a gift from Song Jiaoren. (3pcs)

PLEASE NOTE THIS LOT IS TO BE OFFERED WITHOUT RESERVE.

民國紀念盤一組三只

Provenance: Collection Taoka Bunsen, Shizuoka, Japan.
來源：日本靜岡Taoka Bunsen舊藏

Note: 宋教仁 (1882年4月5日 - 1913年3月22日)，字鈍初，號敦初，筆名漁父。出生於中國湖南省桃源縣。中國近代民主革命家，是中華民國初期第一位倡導責任內閣製的政治家，擔任過華興會和同盟會的主要領導、中華民國臨時政府唐紹儀內閣的農林部總長、也是國民黨的主要籌建人。曾留學日本法政大學、早稻田大學。1913年3月20日，時任國民黨代理理事長的宋教仁在上海北站遭黑道分子槍擊，3月22日不治身亡，終年31歲。

Estimate \$200 - 300



078 SOUTHERN SONG STYLE CONICAL JIZHOU "LEAF" BOWL | 吉州窯樹葉紋茶盞

Dimensions: 5.9" (14.9cm) Dia, 2.3" (5.7cm) H

Of conical shape, covered with a brownish-black glaze thinning at the rim, decorated on the interior with a worm-eaten leaf.

PLEASE NOTE THIS LOT IS TO BE OFFERED WITHOUT RESERVE.

吉州窯樹葉紋茶盞

Provenance: Collection Taoka Bunsen, Shizuoka, Japan
來源：日本靜岡Taoka Bunsen舊藏

Estimate \$300 - 500

079 CANTON ENAMEL FIGURAL BOWL TOGETHER WITH ENAMEL EIGHT TAOIST EMBLEMS DISH, QING DYNASTY | 清銅胎畫琺瑯碗及碟各一件

China, Qing Dynasty

Dimensions:

A: 4.88" (12.4cm) Dia

B: 5.9" (15cm) Dia

A Qing dynasty enamel bowl depicting scholars and attendant with auspicious animals; together with a Qing dynasty enamel dish decorated with Eight Taoist Emblems. (2pcs)

PLEASE NOTE THIS LOT IS TO BE OFFERED WITHOUT RESERVE.

清銅胎畫琺瑯碗及碟各一件

Estimate \$200 - 300

080 A BLUE WHITE EWER,
YONGZHENG MARK, 20TH
CENTURY | 二十世紀青花花卉紋執壺

China, 20th century
Dimensions: 12.5" (31.8cm) H

Of cylindrical body and waisted neck to strap handle, with six-character Yongzheng mark.

PLEASE NOTE THIS LOT IS TO BE OFFERED WITHOUT RESERVE.

二十世紀青花花卉紋執壺

Estimate \$300 - 500



081 GROUP OF 3 PORCELAIN WARES
| 瓷器一組三件

Dimensions:
A: 9.9" (25.1cm) Dia.;
B: 4.1" (10.5cm) H;
C: 3" (7.6cm) H, 4.5" (11.4cm) L

Comprising one Swatow blue-and-white dish decorated with birds and flowers, a famille rose jar decorated with green dragons with stand; and a Peking glass duck-shaped brushwasher. (3pcs)

出口青花花鳥盤
粉彩綠龍碗 (帶底座)
玻璃鴨型筆洗

PLEASE NOTE THIS LOT IS TO BE OFFERED WITHOUT RESERVE.

瓷器一組三件

Estimate \$500 - 700



082 SIGNED WANG BU - BLUE WHITE BRUSH WASHER WITH STAND |
王步款 青花花鳥筆洗 (帶底座)

China, 20th century
Dimensions: 8.5" (21.6cm) Dia

Blue-and-white brush washer decorated with flowers and birds. Six-character yuanwenwuzhiguozhai mark in underglaze blue.

PLEASE NOTE THIS LOT IS TO BE OFFERED WITHOUT RESERVE.

王步款 青花花鳥筆洗 (帶底座)

Provenance: Private Collection, Toronto
來源: 多倫多私人藏家舊藏

Estimate \$400 - 600



083 **FLAMBE VASE, QIANLONG MARK, REPUBLICAN, EARLY 20TH C | 20世紀 窯變紅釉雙耳瓶 大清乾隆年製款**

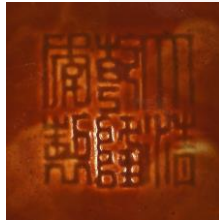
Dimensions: 8.8" (22.3cm) H

Provenance: Chicago Estate, acquired in the 1990's.

PLEASE NOTE THIS LOT IS TO BE OFFERED WITHOUT RESERVE.

20世紀 窯變紅釉雙耳瓶 大清乾隆年製款

Estimate \$1000 - 1500



085 **FAMILLE ROSE FLOWER AND BIRD BALUSTER VASE | 粉彩花鳥紋棒槌瓶 景德鎮款**

China, 20th century

Dimensions: 13.8" (34.9cm) H

Famille rose baluster vase decorated with flowers and birds and lengthy calligraphy. Six-character Jingdezhen mark in underglaze red.

粉彩花鳥紋棒槌瓶 景德鎮款

Estimate \$100 - 200



084 **BLUE WHITE LANDSCAPE PLATE, 18TH CENTURY | 18世紀 青花山水盤**

China, 18th century

Dimensions: 8.9" (22.6cm) Dia

Blue-and-white plate decorated with a man fishing besides a river with willow tree and temples in the background.

18世紀 青花山水盤

Estimate \$100 - 200

086 **SET OF 4 IMARI BLUE WHITE LANDSCAPE DISHES, ARITA 18TH-19TH CENTURY | 日本 青花風景盤一組4只**

18th-19th century, Japan

Dimensions: 7.3" (18.4cm) Dia (4)

Set of 4 blue-and-white *imari* landscape dishes decorated with scrolling foliage on the reverse. (4pcs)

日本 青花風景盤一組4只

Estimate \$200 - 300





087 GROUP OF 7 FAMILLE ROSE BOWLS, 20TH CENTURY | 20世紀中期 景德鎮粉彩碗2對及碗共7件

China, 20th century

Dimensions:

Smallest piece: 3.6" (9.2cm) Dia (2)

Largest piece: 4.5" (11.4cm) Dia

Comprising 7 Jingdezhen famille rose bowls. (7pcs)

20世紀中期 景德鎮粉彩碗2對及碗共7件

Estimate \$100 - 200



088 BLUE WHITE INCISED STARS CUP | 清晚期 青花玲瓏杯 康熙款

China, late Qing Dynasty

Dimensions: 3.3" (8.3cm) Dia, 2.4" (6.1cm) H

Four-character Kangxi mark in underglaze blue. Blue-and-white handled cup with pronounced footring and everted rim decorated with incised star patterns and lotus flowers in underglaze blue.

清晚期 青花玲瓏杯 康熙款

Estimate \$100 - 200



089 TEADUST-GLAZED BOTTLE VASE, QIANLONG MARK, 20TH CENTURY | 20世紀 茶葉末釉撇口尊 乾隆年製款

China, 20th century

Dimensions: 15" (38cm) H

Teadust-glazed zun-form bottle vase. Four-character Qianlong mark at the bottom.

20世紀 茶葉末釉撇口尊 乾隆年製款

Estimate \$200 - 300



090 GE-TYPE CRACKLE BOTTLE VASE, QING DYNASTY | 清同治 哥釉花瓶

China, Qing Dynasty, Tongzhi period

Dimensions: 9.7" (24.8cm) H

Porcelain vase with greyish cream underglaze and imitation ge ware crackle pattern. Includes certificate of antique issued by China National Arts & Crafts IMP. & EXP. Corp., Guangzhou Branch.

清同治 哥釉花瓶

Estimate \$300 - 500



**091 CIZHOU STONWARE
CALLIGRAPHY DISH, YUAN
DYNASTY | 元 磁州白地黑彩盤**

China, Yuan to early Ming Dynasty, 13th century
Dimensions: 11" (28 cm) Dia.

With rounded sides and a wide footring with unglazed foot, the whole glazed an amber colour with iron brown calligraphic lotus and other floral designs to the cavetto.

元 磁州白地黑彩盤

Estimate \$400 - 600



**093 PAIR OF FAMILLE ROSE BALUSTER
VASES, LILINGQUNLI MARK, 1980 |
1980 「醴陵群力」款花瓶一對**

China, 1980
Dimensions: 6.5" (16.5cm) H (2)

A pair of famille rose baluster vases decorated with flowers and scripts. (2pcs)

Note: 醴陵群力瓷廠舊址即紅官窯舊址，位於株洲市來龍門街道八裏庵社區玉瓷路新村1號，始建於1958年。醴陵群力瓷廠的前身，是1958年周恩來按照毛澤東指示親自批復撥款創建的醴陵藝術瓷廠。

20世紀中期 粉彩龍鳳紋碗6只 「江西袁斯如美出品」款

Estimate \$200 - 300



**092 SET OF 2 POLYCHROME GLAZED
DUCKS | 豆青瓷鴨子一組2件**

China
Dimensions:
A: 6" (15.2cm) H; B: 9" (22.9cm) H

Set of 2 porcelain ducks of different sized covered in celadon and light brown glaze. (2pcs)

豆青瓷鴨子一組2件

Estimate \$200 - 300



**094 PAIR OF FAMILLE ROSE FLORAL
BOWLS, EARLY 20TH CENTURY |
20世紀早期 「雅玩珍藏」款粉彩撇口碗一對**

China, early 20th century
Dimensions: 3.6" (9.2cm) Dia (2)

Pair of famille rose bowls with slightly everted rim, decorated with petunia and cricket. Four-character yawanzhencang mark in underglaze blue. (2pcs)

20世紀中期 「雅玩珍藏」款粉彩撇口碗一對

Estimate \$200 - 300

**095 PAIR OF EXPORT FAMILLE ROSE
FLOWER AND BIRD CUPS WITH
COVER | 18-19世紀 出口粉彩花鳥紋蓋杯一對**

China, 18-19th century

Dimensions: 4.1" (10.5cm) H (2)

A pair of export famille rose cups decorated with flowers and birds. (2pcs)

18-19世紀 出口粉彩花鳥紋蓋杯一對

Estimate \$200 - 300



**096 ZHANGZHOU WARE LIBATION
CUP, 17TH CENTURY | 17世紀 漳州
窯蒼龍教子酒杯**

China, 17th century

Dimensions: 2.1" (5.4cm) H

Zhangzhou cream-glazed libation cup.

17世紀 漳州窯蒼龍教子酒杯

Estimate \$300 - 500

**098 FAMILLE-ROSE SLEEVE VASE,
20TH CENTURY | 20世紀 粉彩山水
圖筒瓶 真賞軒製款**

China, 20th century

Dimensions: 13" (33cm) H

A famille-rose sleeve vase, the cylindrical body rising to curved shoulders surmounted by a waisted neck, painted to the exterior with a landscape scene of mountains and pavilions, with four-character "zhen shuang xuan zhi" mark in underglaze red.

20世紀 粉彩山水圖筒瓶 真賞軒製款

Estimate \$1000 - 1500



**097 FAMILLE ROSE STATUE OF WANG
JIE | 文革《王傑》瓷雕像**

China, 20th century

Dimensions:

A: 7.5" (19.1cm) H; B: 11.5" (29.2) cm H (2)

Famille rose statue of Wang Jie with his name inscribed to the base of the statue.

文革《王傑》瓷雕像

Estimate \$200 - 400



099 **CLAIR-DE-LUNE BLUE VASE, REPUBLICAN PERIOD | 民國 天青釉雙耳弦紋瓶 雍正款**

China, Republican Period, 1st quarter 20th century
 Dimensions: 12" (30 cm) H

Of archaistic banded HU shape with narrow footring and wide trumpet mouth, the shoulders set with monster mask ring handles, and the whole glazed a dark clair-de-lune blue lightening at the bands and handles. Underglaze cobalt blue Yongzheng mark.

民國 天青釉雙耳弦紋瓶 雍正款

Estimate \$2000 - 3000



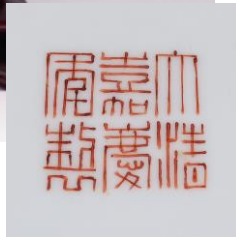
100 **FAMILLE ROSE SHOU-CHARACTER BOWL, JIAQING MARK | 粉彩礬紅纏枝壽紋大碗 嘉慶款**

China
 Dimensions: 14.5" (36.8cm) Dia

Six-character Jiaqing mark in underglaze iron-red. Famille rose shou-character bowl decorated with scrolling foliage and lotus flowers.

粉彩礬紅纏枝壽紋大碗 嘉慶款

Estimate \$2000 - 3000



101 **FAMILLE VERTE FIGURAL FISH BOWL, 18-19TH CENTURY | 18-19世纪 五彩庭院侍女金鱼大缸**

China, Late Qing Dynasty, 19th Century
 Dimensions: 4.2" (10.8 cm) H, 6.2" (16cm) Dia.

Bowl of shallow wide form with everted rim, rising from a tall conical stem, painted to the exterior in cobalt underglaze blue with lotuses and a pair of phoenixes, the interior with lotus and double rings, 6-character mark of Yongzheng to base.

18-19世纪 青花雙鳳蓮紋高足碗

Estimate \$2000 - 3000





102 FAMILLE ROSE 'CRANE' DISH | 粉彩描金仙鶴山水紋折沿盤

China, 18-19th century
Dimensions: 14" (35.4cm) Dia, 12" (30.5cm) H

Famille verte basin depicting the birthday of Xiwangmu, the interior decorated with goldfish and algae.

Provenance: Family Collection, Inverness, Scotland. By tradition, purchased from 1912 sale of contents of Bardowie Castle, East Dunbartonshire, Scotland.
來源：據傳統，該拍品從1912年蘇格蘭東鄧巴頓郡巴多維城堡的物品銷售中購得。

18-19世紀 五彩庭院侍女金魚大缸

Estimate \$3000 - 5000

104 SUI-TANG WHITE-GLAZED HANDLED JAR | 隋 白釉四系罐

China, Sui (581-618) to early Tang Dynasty (618-907)
Dimensions: 10.4" (26.5cm) H

Of elongated ovoid form with a low cylindrical neck and rim, the shoulders with 4 heavily formed double lug handles luted to the body, narrow splayed unglazed foot, the glaze of cream white and finely crackled.

Compare with a similar white stoneware jar in the collection of the British Museum, dated Sui (581-618), Hebei province, ref. 1968,0422.23 Sedgwick Bequest. Compare also with a very similar jar from the Collection of Sakamoto Goro in Sotheby's New York, sale 13SEP16 Lot 7, 30.9 cm H.

隋 白釉四系罐

Provenance: Private Collection, Texas, USA.
來源：美國Texas私人藏家舊藏

https://www.britishmuseum.org/collection/object/A_1968-0422-23
<http://www.sothebys.com/en/auctions/ecatalogue/2016/chinese-art-through-eye-sakamoto-goro-early-chinese-art-n09584/lot.7.html>

Estimate \$5000 - 7000



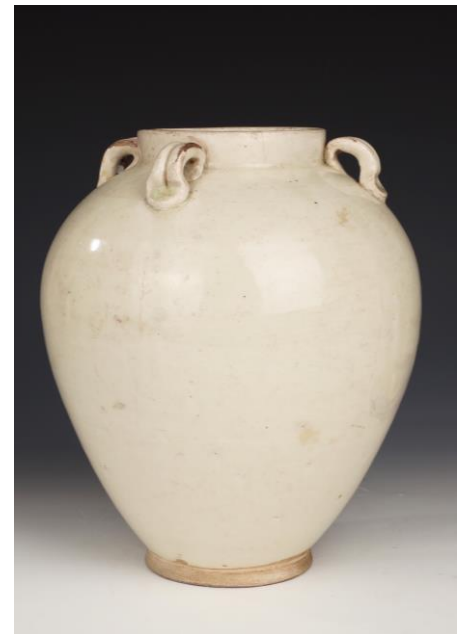
103 PAIR OF BLUE WHITE FIGURAL BOWLS, QING DYNASTY, KANGXI PERIOD | 清康熙 青花庭院人物紋碗一對

China, Qing dynasty, Kangxi period
Dimensions: 7.8" (19.7cm) Dia, 3.5" (8.9cm) H (2)

A pair of blue-and-white bowls decorated with scholars and attendants in the garden. Each decorated with a floral roundal on the center of inside and auspicious symbols on the base. (2pcs)

清康熙 青花庭院人物紋碗一對

Estimate \$2000 - 3000



**105 RARE SILVER GROUND BLUE
WHITE FLORAL FORM DISH,
YONGZHENG MARK AND PERIOD | 清雍正
銀地青花靈芝紋小蝶**

China, Qing dynasty, Yongzheng period
Dimensions: 4.8" (12.2cm) Dia

Shallow dish with rounded side, no depression in the cavetto, foliate rim in the form of multi-petalled flower, the cavetto with 10 petals to the outer ring, 10 to the inner and surrounding a central roundel of 8 petals. The two outer rings each painted in flowers and lingzhi sacred fungus in underglaze cobalt blue, the surrounding area unusually enameled in silver. The exterior similar with two bands of petals of florals and lingzhi, the base with a six character mark of Yongzheng in underglaze blue within a double ring, and of the period.

Silver ground enamel decoration is a rarity in wares from the Imperial kilns at Jingdezhen and very few examples are noted, although it seems to have been somewhat more common though still rare in export wares. It is possible that the later colour change of the enamel to a darker tone was seen as unsuitable and the use of it no longer attempted after the early Qianlong period. The dense overlapping petal form of the dish has precursors in Kangxi examples, possibly influenced by Kraal export wares, and the flower petal motif was certainly popularized in export tea wares during the Yongzheng period and into the Qianlong period.

For the decorative style, please see a handled small bowl, Yongzheng mark and period with yellow ground around the cobalt blue painted flowers and lingzhi, in Sotheby's London, sale 4NOV2020 Lot 1.

<https://www.sothebys.com/en/buy/auction/2020/imperial-porcelain-a-private-collection/a-rare-yellow-ground-blue-and-whitehandled-cup>

清雍正 銀地青花靈芝紋小蝶

Note: The surface is tested by Thermo Scientific Niton XL2 for the presence of silver.

Estimate \$8000 - 12000



**106 YUAN TIXI CARVED GURI
CINNABAR LACQUER TEA
CADDY – CHAIRE, YUAN DYNASTY | 元 錫
漆蓋罐 (象牙蓋)**

China and Japan, 13th century and later additions
Dimensions: 5.6" (14.3 cm) H

A large tea caddy (chaire) created from two deep tixi (guri) carved cinnabar and black lacquer bowls of the Yuan dynasty, joined rim to rim and the bottom of one removed to form the mouth of the caddy. The base with addition lacquer added for stability and a Japanese natural carved cover (futa) of late 19th century dating.

元 錫漆蓋罐 (象牙蓋)

Estimate \$1000 - 1500





107 CARVED POLYCHROME LANTERN-SHAPED LACQUER BOX AND COVER, TOGETHER WITH GREEN GLAZED LOTUS LEAF-SHAPED BOWL | 乾隆款龍鳳紋漆盒及綠釉荷葉碗2件

Dimensions:

A: 9.5" (24cm) W, 7.6" (19.4cm) L

B: 15" (38cm) Dia

Polychrome lacquer box and cover that are intricately carved with dragon and phoenix motif, all set against a dense geometric ground, with Qianlong mark on the base; together with a green-glazed bowl in the form of a lotus leaf. (2pcs)

乾隆款龍鳳紋漆盒及綠釉荷葉碗2件

Estimate \$200 - 300



109 CLOCK AND ACCESSORIES | 鐘表及配件

Comprising a clock and 13 pieces of clock accessories. (14pcs)

鐘表及配件

Estimate \$200 - 300



108 GROUP OF 3 LACQUER BOTTLE VASES | 雕花漆瓶一組3個

China

Dimensions:

A: 5" (12.7cm) H;

B: 8" (20.3cm) H;

C: 9" (22.9cm) H

Comprising a cinnabar lacquer carved floral vase, a black-and-red lacquer carved floral vase, and a handled black-and-red lacquer carved floral vase. (3pcs)

雕花漆瓶一組3個

Estimate \$200 - 300



110 CARTIER ROADSTER PM ACIER WATCH | 女式卡迪亞腕表

Dimensions: 1"(2.54cm)W, 1.5"(3.8cm) L

Including the original package and certificate.

女式卡迪亞腕表

Estimate \$800 - 1000

111 2 ARCHAISTIC INCISED POTTERY GRANARY JARS, HAN DYNASTY | 漢 弦紋三足獸面陶罐2只

Dimensions:

A: 12" (30.5cm) H

B: 9.5" (24cm) H

A pair of stoneware tripods with short feet. Circular opening at the top and small rectangular opening at the lower base of the body. Minimal ornament with three sets of three horizontal stripes protruding along body. (2pcs)

漢 弦紋三足獸面陶罐2只

Estimate \$500 - 700



112 2 NEOLITHIC PAINTED POTTERY JARS, MAJIAYAO CULTURE, 3300-2000 BCE | 新石器時期 馬家窯彩繪陶罐2只

China, 3300-2000 BCE

Dimensions:

A: 14.5" (36.8cm) H

B: 12" (30.5cm) H

A pair of jars, each with ovoid body, waisted neck, and two strap handles, geometric motifs painted to the upper body. (2pcs)

新石器時期 馬家窯彩繪陶罐2只

Estimate \$1000 - 1500



LOT 111 & LOT 112:

Provenance: Collection of Philip Gould (1922-2019), professor of Chinese Art History who taught at Columbia University, Sarah Lawrence College, and Beijing Teachers College. He was a passionate collector of African art, he curated many museum and gallery exhibitions.

來源: Philip Gould收藏, 曾於哥倫比亞大學任教中國藝術史。

113 2 NEOLITHIC PAINTED POTTERY JARS, MAJIAYAO CULTURE, 3300-2000 BCE | 新石器時期 馬家窯彩繪陶罐2只

China, 3300-2000 BCE

Dimensions:

A: 12.5" (31.8cm) H

B: 15.5" (39.4cm) H

A pair of jars, each with ovoid body, waisted neck, and two strap handles, swirling motifs painted to the upper body. (2pcs)

新石器時期 馬家窯彩繪陶罐2只

Estimate \$1000 - 1500



114 NEOLITHIC PAINTED POTTERY JAR, MAJIAYAO CULTURE, 3300-2000 BCE | 新石器時期 馬家窯彩繪陶罐

China, 3300-2000 BCE

Dimensions:

A: 14.5" (36.8cm) H

B: 12.5" (31.8cm) H

A pair of jars, each with ovoid body, waisted neck, and two strap handles, geometric motifs painted to the upper body. (2pcs)

新石器時期 馬家窯彩繪陶罐2只

Estimate \$800 - 1000



115 NEOLITHIC PAINTED POTTERY JAR, MAJIAYAO CULTURE, 3300-2000 BCE | 新石器時期 馬家窯彩繪陶罐

China, 3300-2000 BCE

Dimensions: 13" (33cm) H

Ovoid body with a waisted neck, with two strap handles, geometric motifs painted to the upper body.

新石器時期 馬家窯彩繪陶罐

Estimate \$800 - 1000



LOT 113 & LOT 114 & LOT 115:

Provenance: Collection of Philip Gould (1922-2019), professor of Chinese Art History who taught at Columbia University, Sarah Lawrence College, and Beijing Teachers College. He was a passionate collector of African art, he curated many museum and gallery exhibitions.

來源: Philip Gould收藏, 曾於哥倫比亞大學任教中國藝術史。



116 SILVER 1-YUAN COIN, 1914 TOGETHER WITH GUANGXU SILVER COIN, QING DYNASTY | 民國三年袁大頭1件，光緒銀元四川省造1件

China, 19-20th century
Dimensions: 1.6" (4.1cm) Dia (2)

Comprising a Republican silver \$1 coin, 1914, Yuan Shih Kai dollar, Military issue; together with a Guangxu silver coin, Szechuen Province. (2pcs)

民國三年袁大頭1件，光緒銀元四川省造1件

Estimate \$300 - 400



118 1986, 1992, 1994 SILVER COINS FROM ROYAL CANADIAN MINT (3 BOXES) | 加拿大銀幣盒裝3件 (1986, 1992, 1994)

Canada
Dimensions: 1.4" (3.6cm) Dia (3)

Silver coins in original Royal Canadian Mint packaging. (3pcs)

加拿大銀幣盒裝3件 (1986, 1992, 1994)

Estimate \$100 - 200



117 1979, 1980, 1981, 1983 SILVER COINS FROM ROYAL CANADIAN MINT (4 BOXES) | 加拿大銀幣盒裝4件 (1979, 1980, 1981, 1983)

Canada
Dimensions: 1.5" (3.8cm) Dia (4)

Silver coins in original Royal Canadian Mint (RCM) packaging. (4pcs)

加拿大銀幣盒裝4件 (1979, 1980, 1981, 1983)

Estimate \$100 - 200



119 CANADA 1976 MONTREAL OLYMPIC 28 SILVER COIN SET WITH BOX | 加拿大1976年蒙特利爾奧運會28件銀幣套裝

Canada, 1976
Dimensions:
1.8" (4.5cm) Dia (14)
1.5" (3.8cm) Dia (14)

Canada 1976 Silver Olympic 28 Coin Set in original Royal Canadian Mint (RCM) packaging. (28pcs)

加拿大1976年蒙特利爾奧運會28件銀幣套裝

Estimate \$400 - 600



120 CANADA 1988 CALGARY WINTER OLYMPIC 10 SILVER COIN SET WITH BOX & COA | 加拿大1988年卡爾加裏冬奧會10件銀幣套裝

Canada, 1988
Dimensions: 1.6" (4cm) Dia (10), total 10oz

Canada 1988 Calgary Winter Olympic 10 Silver Coin set in original Royal Canadian Mint (RCM) packaging, with COA. Each coin is Silver Commemorative Canadian \$20. (10pcs)

加拿大1988年卡爾加裏冬奧會10件銀幣套裝

Estimate \$600 - 800



121 CANADA 1988 CALGARY WINTER OLYMPIC 10 SILVER COIN SET WITH BOX & COA | 加拿大1988年卡爾加裏冬奧會10件銀幣套裝

Canada, 1988
Dimensions: 1.6" (4cm) Dia (10)

Canada 1988 Calgary Winter Olympic 10 Silver Coin set in original Royal Canadian Mint (RCM) packaging, with COA. Each coin is Silver Commemorative Canadian \$20. (10pcs)

加拿大1988年卡爾加裏冬奧會10件銀幣套裝

Estimate \$600 - 800



122 2 TINS OF HONG KONG LI'AN TEA CO. PU'ER TEA, 1990S | 1990年代新光灑樓茶皇廳專用茶2筒

Hong Kong, 1990s
Dimensions: 3lb (2)

2 tins of Pu-Erh tea by Hong Kong Li'an Tea CO. produced specifically for Chahuangting under Hsin Kuang Restaurant Group. (2pcs)

1990年代 新光灑樓茶皇廳專用茶2筒

Note: 原裝鐵桶包裝，重約3磅，供應商香港利安茶行。

Estimate \$300 - 500



123 YUNNAN WILD GINSENG PU-ERH TEA, 1990S, 3 BOXES | 90年代雲南野生人參茶（普洱）3盒

China, 1990s
Dimensions: 300g (3)

Comprising 3 boxes of wild ginseng Pu-Erh tea, each box with 3 compressed ginseng-shaped tea, produced by Yunnan Shuangxiang Factory. (3pcs)

90年代 雲南野生人參茶（普洱）3盒

Estimate \$200 - 300



124 YUNNAN PU-ERH TUO TEA, XIAGUAN TEA FACTORY (5 BOXES) | 雲南沱茶 (銷法國) 5盒

China
Dimensions: 110g - 120g (5)

5 boxes of Pu-Erh Tuo tea, French export from Xiaguan Tea Factory. (5pcs)

雲南沱茶 (銷法國) 5盒

Estimate \$700 - 900



125 YUNNAN PU-ERH TUO TEA, XIAGUAN TEA FACTORY (5 BOXES) | 雲南沱茶 (銷法國) 5盒

China
Dimensions: 110g - 120g (5)

5 boxes of Pu-Erh Tuo tea, French export from Xiaguan Tea Factory. (5pcs)

雲南沱茶 (銷法國) 5盒

Estimate \$700 - 900



126 GUANG YUN GONG RAW TEA CAKE, 1990S (5 BOXES) | 90年代 廣雲貢普洱茶餅 5盒

China, 1990s
Dimensions: 357g (5)

5 boxes of Guang Yun Gong raw tea cake. (5pcs)

90年代 廣雲貢普洱茶餅 5盒

Estimate \$300 - 500

128 CHANGBAI MOUNTAIN WILD GINSENG, 1980S | 1980年代 長白山野山人參一盒

China, 1980s
Dimensions: 172.5g (including the package)

Produced by Jilin Ginseng CO.

1980年代 長白山野山人參一盒

Estimate \$500 - 700



127 CHANGBAI MOUNTAIN WILD GINSENG, 1980S | 1980年代 長白山野山人參一盒

China, 1980s
Dimensions: 175.5g (including the package)

Produced by Jilin Ginseng CO.

1980年代 長白山野山人參一盒

Estimate \$500 - 700





129 2 CANS OF LOONG TSENG TEA TOGETHER WITH 2 PACKS OF LU'AN TEA, 1990S | 九十年代 香六安茶葉2包及廣生龍井鐵盒2罐

China, 1990s
Dimensions: 8oz (2); 21oz(2)

Comprising 2 cans of Loong Tseng Tea originally produced by Guangsheng Tea Set Brand and 2 packs of Lu'an tea originally produced by Hukien Tea CO. (4pcs)

九十年代 香六安茶葉2包及廣生龍井鐵盒2罐

Estimate \$300 - 400



130 2 TINS OF FUJIAN PAI MU TAN TEA | 福建向陽花牌白牡丹茶2罐

Dimensions: 150g Net Weight (2)

2 tins of Pai Mu Tan tea originally produced by Fujian Tea Import & Export Co., Ltd. (2pcs)

福建向陽花牌白牡丹茶2罐

Estimate \$300 - 500

131 2 BOXES OF SHIH CHU CHINESE GINSENG | 石柱人參2盒



Dimensions: 57.53oz (including package) (2)

2 boxes of Shih Chu Ginseng originally produced in the northeastern region of China. (2pcs)

石柱人參2盒

Estimate \$400 - 600

132 2 BOXES OF KORYO GINSENG | 高麗參2盒



Dimensions: 13.23oz Weight (2)

Comprising 2 boxes of Koryo ginseng. (2pcs)

高麗參2盒

Estimate \$400 - 600



133 GROUP OF 4 PORCELAIN VESSELS | 瓷器一組4件

Dimensions:

A: 6.3" (15.9cm) H B: 5.5" (14cm) H

Comprising a famille rose flowers and birds globular vase and cover, a famille rose figural globular vase and cover, a blue-and-white landscape dish, and a famille rose celadon-ground baluster vase. (4pcs)

瓷器一組4件

Estimate \$200 - 300



135 GUAN-TYPE CRACKLE BRUSHWASHER TOGETHER WITH BLUE WHITE UNDERGLAZE DRAGON PATTERNS HU-SHAPED BOTTLE VASE | 20世紀 仿官窯水洗及青花龍紋雙耳瓶

China, 20th century

Dimensions:

A: 6.5" (16.51cm) Dia, Brush washer
B: 11.9" (30.16cm) H, Vase

Porcelain bowl with greyish cream underglaze and imitation guan ware crackle pattern, together with a porcelain hu-shaped vessel with white body and underglaze blue design of dragons among swirling clouds with elephant shaped pair of handles.

20世紀 仿官窯水洗及青花龍紋雙耳瓶

Estimate \$200 - 300

134 BLUE WHITE BEAKER VASE, QING DYNASTY | 清 青花蕉葉紋花觚 康熙款

China, Qing Dynasty

Dimensions: 5.4" (13.7cm) H

Six-character Kangxi reign mark in underglaze blue. Decorated with a band of flowers and scrolling foliage on the midsection and symmetrical pendant leaves on the upper and lower section.

清 青花蕉葉紋花觚 康熙款

Provenance: Taiwanese Family Collection in Toronto

來源: 臺灣移民藏家

Estimate \$300 - 500



136 PAIR OF PERSIMMON-GLAZED FAMILLE ROSE FLORAL DISHES, QING DYNASTY | 清嘉慶 紫金釉粉彩開光描金盤一對

China, Qing dynasty, Jiaqing period

Dimensions: 7.9" (20cm) Dia (2)

A pair of persimmon-glazed dishes decorated with gilt floral and ribbon patterns and famille rose flowers. Underglaze blue seal to the bottom. (2pcs)

清嘉慶 紫金釉粉彩開光描金盤一對

Estimate \$300 - 500

137 LONGQUAN CELADON-GLAZED ZUN-TYPE HANDLED VASE WITH STAND, 20TH CENTURY OR EARLIER | 20世紀或更早 龍泉象耳鹿頭尊（帶底座）

China, 20th century or earlier
Dimensions: 9.3" (23.5cm) H

Longquan celadon-glazed zun-shaped baluster jar with two handles imitating elephant ears.

20世紀或更早 龍泉象耳鹿頭尊（帶底座）

Provenance: Hong Kong Family Collection, Toronto, Canada
來源：多倫多香港移民家族舊藏

Estimate \$600 - 800



138 BLUE WHITE BIRD AND FLOWER PATTERN SCROLL POT, LATE QING DYNASTY | 晚清 青花花鳥畫筒

China, Late Qing Dynasty
Dimensions: 24" (61cm) H, 9" (22.9cm) Dia

Blue-and-white scroll pot decorated with flowers and birds.

晚清 青花花鳥畫筒

Provenance: Hong Kong Family Collection, Toronto, Canada
來源：多倫多香港移民家族舊藏

Estimate \$600 - 800



139 SANCAI GLAZED BALUSTER VASE AND COVER, KANGXI MARK, QING DYNASTY | 清 素三彩雞雞牡丹將軍罐 康熙款

China, Qing dynasty
Dimensions: 7.3" (18.5cm) Dia, 4" (10.2cm) H

Six-character Kangxi mark in double rings. Sancai glazed baluster vase with cover decorated with chicken and flowers.

清 素三彩雞雞牡丹將軍罐 康熙款

Estimate \$500 - 700



140 BLUE WHITE LANDSCAPE TULIP VASE, KANGXI MARK | 清 青花山水六孔瓶 康熙款

China, Qing Dynasty
Dimensions: 9.3" (23.5cm) H

Four-character Kangxi mark in underglaze blue. Blue-and-white tulip bottle vase decorated with landscape painting over the body and the neck, garlic-shaped rim attached to the top of the neck.

清 青花山水六孔瓶 康熙款

Estimate \$500 - 700



141 2 FAMILLE ROSE CUPS TOGETHER WITH 2 DOUCAI CUPS, QING DYNASTY | 清 彩繪瓷盃4件

China, Late Qing Dynasty

Dimensions:

A: 1.9" (4.8cm) Dia (2) B: 2.7" (6.9cm) Dia (2)

Comprising a pair of floral doucai cups; a famille-rose beaker cup decorated with peacocks, tree and calligraphic scripts, with six-character Yongzheng mark; and a famille-rose cup decorated with hawk and fish pattern, with six-character Daoguang mark. (4pcs)

清 彩繪瓷盃4件

Estimate \$600 - 800



晚清粉彩鐘型杯 大清雍正年製款
晚清粉彩鷹魚紋馬蹄杯 大清道光年製款
光緒鬥彩小盃一對



142 PAIR OF FAMILLE-ROSE VASES, REPUBLICAN PERIOD | 民國 粉彩 山水花插一對

China, Republican Period

Dimensions: 5.5" (14cm) H (2)

A pair of famille-rose vases, painted to the exterior in a continuous river and mountain landscape scene with pagoda and pavilion, six-character Qianlong mark in underglaze red. (2pcs)

民國 粉彩山水花插一對

Estimate \$500 - 700

143 RUBY ENAMELED OLIVE-SHAPED BOTTLE VASE, REPUBLICAN PERIOD | 民國 胭脂紅釉橄欖瓶 乾隆款

China, Republican Period

Period

Dimensions: 9.5" (24.1cm) H

Olive-shaped bottle vase covered in ruby-enameled glaze stopping at the base and rim. Rim decorated with a strap of gilt, six-character Qianlong mark in underglaze red.

民國 胭脂紅釉橄欖瓶 乾隆款

Estimate \$700 - 900



144 MIRROR-BLACK-GLAZED BOTTLE VASE, DAOGUANG MARK | 烏金釉 撇口瓶 道光款

China

Dimensions: 15.6" (39.7cm) H

Six-character Daoguang mark in underglaze blue. Body covered in lustrous black glaze stopping at the base.

烏金釉撇口瓶 道光款

Estimate \$500 - 700





145 TURQUOISE-GLAZE PEACH-SHAPED BRUSHWASHER GROUP, LATE QING DYNASTY | 清 孔雀藍釉雙桃型筆洗

China, Late Qing Dynasty
Dimensions: 10.1" (26cm) L

Peach-shaped brushwasher group covered in turquoise crackle glaze, rim decorated with leaves and bottom decorated with three bat reliefs.

清 孔雀藍釉雙桃型筆洗

Estimate \$700 - 900



147 INCISED LONGQUAN CELADON DISH, YUAN DYNASTY OR LATER | 元至明 龍泉刻花盤

China, Yuan-early Ming Dynasty
Dimensions: 5.5" (14cm) Dia.

A shallow celadon dish with everted rim and depression in the cavetto, incised patterns of tendril vines around the rim, pale celadon glazing overall, unglazed foot rim burnt orange; incised tendril vine patterns decorating the exterior.

元至明 龍泉刻花盤

Estimate \$600 - 800



146 YELLOW-GLAZED INCISED DRAGON BLUE WHITE FLORAL PLATE, GUANGXU MARK AND PERIOD | 清光緒 黃釉暗刻龍紋青花花卉盤

China, Qing dynasty, Guangxu period
Dimensions: 5.3" (13.3cm) Dia

Yellow-glazed plate, with anhua-decorated dragon pattern in the front and blue-and-white botanical pattern on the reverse, six-character Guangxu mark.

清光緒 黃釉暗刻龍紋青花花卉盤

Estimate \$700 - 900

148 YELLOW-GROUND GREEN-GLAZED DRAGON BOTTLE VASE, QIANLONG MARK | 黃地綠龍賞瓶 乾隆款

China
Dimensions: 9.3" (23.5cm) H

Six-character Qianlong mark in underglaze blue. Yellow-glazed bottle vase decorated with dragons and clouds in green.

黃地綠龍賞瓶 乾隆款

Estimate \$700 - 900



大清光緒年製



149 PAIR OF DOUCAI AND FAMILLE ROSE DISHES, KANGXI MARK, QING DYNASTY | 晚清 纏枝蓮紋鬥彩盤一對 康熙款

China, Qing Dynasty

Dimensions: 4.9" (12.4cm) Dia (2)

Each dish painted to the interior with a central medallion depicting entwined lotus sprays and foliage, the exterior decorated with a frieze of repetitive patterns. Six-character Kangxi mark in underglazed blue and double circles.

(2pcs)

Compare with a pair of doucai saucer dishes, Guangxu Mark and Period in Christie's London, Sale 5MAR2003, Lot 9580.

<https://www.christies.com/lot/lot-4063531>

晚清 纏枝蓮紋鬥彩盤一對 康熙款

Estimate \$1000 - 1500

151 DEHUA BLANC DE SEATED GUANYIN STATUE WITH BOY, QING DYNASTY | 清 德化觀音坐像

China, Qing Dynasty

Dimensions: 12.9" (32.7cm) H

The figure is shown seated on a tall rocky outcrop with legs crossed and left arm bent to support a ruyi scepter, beside a vase and bundle of scrolls on an adjacent rock. She wears long robes, ornate beaded jewelry, and her hair is tied to high bun. Her eyes gaze downward toward a smiling acolyte standing on a leaf above crashing waves, shown with hands clasped together and wearing long, billowing scarves.

Compare with a Dehua Figure of Guanyin, late Qing dynasty - Republic period, in Christie's New York Sale 15Mar2015, Lot 3720.

<https://www.christies.com/lot/lot-5880179>

清 德化觀音坐像

Estimate \$1000 - 1500



150 YELLOW-GLAZED HU-SHAPED FLORAL TWIN-HANDLED VASE, EARLY 20TH CENTURY | 20世紀早期 黃釉暗刻花卉紋四方貫耳瓶

China, early 20th century

Dimensions: 12" (30.5cm) H

The pear-shaped octagonal vessel of archaic hu form, with a round belly rising up from a straight foot to a tapered neck slightly flaring at the rim, flanked by square lug handles and covered overall with yellow glaze with incised patterns of scrolling leafy foliage and chrysanthemum.

20世紀早期 黃釉暗刻花卉紋四方貫耳瓶

Estimate \$1000 - 1500



152 DEHUA BLANC-DE-CHINE BOX AND COVER, SOUTHERN SONG OR YAUN DYNASTY |
南宋或元 德化白釉印花蓋盒

China, Southern Song or Yuan dynasty
Dimensions: 7.5" (19.1cm) Dia

Dehua Blanc-de-Chine round box and cover decorated with foliage reliefs.

南宋或元 德化白釉印花蓋盒

Estimate \$700 - 900



153 RARE BISCUIT GRISAILLE
LANDSCAPE VASE, 18-19TH
CENTURY | 清 素胎墨彩花瓶

China, Late Qing to Republican Period, late 19th to
early 20th century
Dimensions: 8.8" (22.5 cm) H

Of baluster form with a wide trumpet mouth and pronounced footring, the rim with key fret and hanging garlands and neck with high stylized Qing lappets with a ruyi collar at the shoulder. A continuous landscape of mountains and rivers surrounds the body – all decoration in iron black fired grisaille painted directly on the unglazed biscuit fired body – sutaimocai (biscuit fired grisaille).

Only about a dozen examples of this white bodied biscuit fired grisaille have been published, and all are conservatively dated to the late Qing to early Republican period, often having spurious Qianlong impressed marks and usually small desk or scholar's items. Compare with a set of 10 desk items in this biscuit fired grisaille in Sotheby's New York sale, 20MAR2019, Lot 775 – each signed biyunshanfang and dated late 19th to early 20th century.
<https://www.sothebys.com/en/auctions/ecatalogue/2019/important-chinese-art-n10032/lot.775.html?locale=en>

清 素胎墨彩花瓶

Provenance: Private Collection, Montreal, Canada
來源：蒙特利爾私人收藏

Estimate \$1000 - 1500

154 BLUE AND WHITE FANG HU-SHAPED VASE | 青花纏枝蓮八方貫耳瓶

China, Republican Period, early 20th century
Dimensions: 5.8" (14.8 cm) H

Of pear-shaped body supported on a splayed rectangular footring, with a high neck and narrow mouth flanked by a pair of tubular handles, painted in blue and white lotus and flower scrolls, with a band of waves at the neck and a band of clouds at the foot. 6 character mark of Qianlong at the base.

青花纏枝蓮八方貫耳瓶

Provenance: Private Collection, Toronto, Canada
來源：多倫多西人藏家

Estimate \$800 - 1000



155 A CELADON GE-STYLE CRACKLE WARE BOWL, MING DYNASTY OR LATER | 明或更晚 哥窯墩式碗

China, Ming Dynasty or later, 16th – 18th century
Dimensions: 5" (12.8 cm) Dia.

Of deep, round-bottomed form with a thick wall and an un-everted rim, the exterior and interior glazed in a greenish-grey, suffused with a matrix of brown crackle in imitation of Song dynasty Ge wares, with a dark brown wash to base.

Compare with:
<https://onlineonly.christies.com/s/art-china-arnhold-collection/small-crackle-glazed-bowl-171/74053>

明或更晚 哥窯墩式碗

Provenance: Private Collection, Montreal, Canada
來源：蒙特利爾私人收藏

Estimate \$1000 - 1500



156 LANDSCAPE - ZHANG DENG TANG | 張登堂 山水

China
Dimensions: 19.2" (48.9cm) W, 32.2" (81.9cm) L

Scroll painting of cliffside landscape with boats, buildings, and cherry blossom tree.

張登堂 山水

Estimate \$300 - 500



Note: 張登堂，1944年出生于山東省聊城市，1962年畢業於濟南藝術學校美術科。師從李可染、李苦禪等國畫大師學習創作，作品主要為山水畫等題材，現為中國美術家協會會員，山東省政協委員，山東省美協理事，濟南市美協副主席，山東畫院山水畫研究會會長，山東大學美術考古研究所兼職教授，山東省政協聯誼書畫院副院長，河山畫會理事，濟南畫院院長，一級美術師。

157 PINE TREE AND BIRD - QIAO MU | 喬木松



China
Dimensions: 18.5" (47cm) W,
32.5" (82.6cm) L

Scroll painting of bird seated
among a pine tree with
bamboo and rockery. Includes
two seals and a short
calligraphy inscription.

喬木松

Estimate \$300 - 500

159 FLOWERS AND BIRDS- ZHU XINSHENG | 朱欣生 花鳥

China
Ink, Hanging Scroll
Dimensions: 17"
(43.2cm) W, 37.25"
(94.6cm) L

Scroll painting of two
birds amongst rockery
and plants. Including
calligraphy and three
marks.

朱欣生 花鳥

Note: 朱欣生，生於江蘇蘇州。自幼酷愛書畫，擅寫意花鳥。所作章法嚴謹，筆墨蒼渾，講求意境。

Estimate \$200 - 300



158 MAPLE LEAF TREE - WU JINGCHU | 吳靜初 霜葉紅於二月花 書法

Dimensions: 13.2"
(33.7cm) W, 40.7"
(103.5cm) L

Scroll painting with maple
leaf tree and small bird
hiding among the
branches.

吳靜初 霜葉紅於二月花
書法

Note: 吳靜初，1948年6月生於杭州。幼年自學西畫及金石書法。現任清華大學美術學院客座教授並開設吳靜初工作室，中國美術學院客座教授，中國美術家協會會員，西泠印社社員，浙江畫院特聘畫師。

Estimate \$200 - 300



160 WATERFALL FLOWING IN MOUNTAINS - XU BEITING | 徐北汀 幽谷松瀑圖

China
Watercolor and Ink, Hanging
Scroll
Dimensions: 18" (45.7cm) W,
27.2" (69.2cm) L

Scroll painting of landscape
featuring waterfall, mountains,
and gnarled pine.

徐北汀 幽谷松瀑圖

Estimate \$300 - 500



Note: 徐北汀(1908.7—1993.9)。又名渺尊、徐熹、渺翁。江蘇吳江人。擅長中國畫。從師於清代畫家吳觀岱。1931年於江蘇、上海「白馬畫社」賣畫課徒為生。1939年曾任北京大學文學院藝術研究會國畫導師。後任北京市工藝美術學校教授。

161 LANDSCAPE - YAO SHUPING | 姚叔平 山水

China, 1911
Watercolor and Ink on paper, Hanging Scroll
Dimensions: 14.2" (36.2cm) W, 48.5" (123.2cm) L
Scroll painting of landscape featuring boats, architecture, and mountains.

姚叔平 山水

Note: 姚叔平，善工畫，畫作山水筆墨沈郁，饒有氣韻，寫意人物瀟灑傳神，偶作小品花果，意近新羅。弟姚鐘藩，亦工畫。

Estimate \$700 - 900



163 BIRD AND FLOWERS - XIE ZHIGUANG | 謝之光 梅花翠鳥圖

China, 20th century
Ink and Watercolor on Paper, Hanging Scroll
Dimensions: 13.2" (33.7cm) W, 20" (50.8cm) L

Scroll painting of bird seated on a blooming prunus tree branch. Includes seal and calligraphy inscription.
謝之光 梅花翠鳥圖

Note: 謝之光，1899年出生於浙江余姚，1913年隨父母來到上海，師從周慕橋，後畢業於上海美術專科學校，師從張聿光、劉海粟。先後為多家煙草公司創作月份牌。1960年擔任上海中國畫院畫師。

Estimate \$300 - 500

162 CALLIGRAPHY - XINGKONG | 性空和尚 掬水月在手 書法

China
Ink on Paper, Hanging Scroll
Dimensions: 13.2" (33.7cm) W, 40.2" (102.24cm) L

Calligraphy scroll painting.

性空和尚 掬水月在手 書法

Note: 性空法師，1922年2月5日出生，蘇州寒山寺法主。

Estimate \$200 - 300



164 CAT - LI ZHENG TIAN | 李正天 貓

China
Ink on Paper, Hanging Scroll
Dimensions: 15.2" (38.7cm) W, 12.7" (32.4cm) L

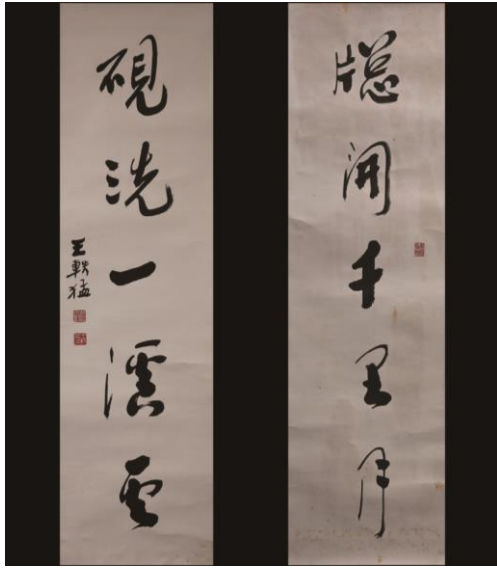
Scroll painting of a crouching black and white cat with green eyes. Includes two seals and a short calligraphy inscription.

李正天 貓

Note: 李正天（1942年12月24日 - ），土家族，中國廣州當代藝術作家，李一哲事件中的主要人物。李正天曾任廣州美術學院導師，美學、素描和研究生論文答辯委員會委員。兼中國管理科學研究院教授。

Estimate \$200 - 300





165 WANG YIMENG - CALLIGRAPHY COUPLET | 王軼猛 書法對聯

Taiwan, 20th century
Ink on Paper

Dimensions: 13.6" (34.6cm) W, 50" (127cm) L

Set of two scroll paintings of calligraphy. (2pcs)

王軼猛 書法對聯

Note: 王軼猛，臺灣著名書法家，原名克培，號三力齋主，為王遐舉胞弟，生於1922年，湖北監利人，現定居美國。

Estimate \$200 - 300

166 TANG CHUYOU - SET OF 4 LANDSCAPE SCROLL PAINTINGS | 湯由礎 山水鬥方

China, 20th century
Ink and Watercolor on Paper
Dimensions: 13" (33cm) W, 7.7" (19.7cm) L

Set of four scroll paintings depicting landscapes of blue and red flowers with mountains in the background.

湯由礎 山水鬥方

Note: 湯由礎 (1912.9—1967) 廣東新會人。擅長水彩畫、版畫。曾就讀於廣東省立孤兒教育院藤工科，1927年赴新加坡，從事廣告商標設計等工作。



Estimate \$300 - 500

167 DU XIMING - STUDY OF A COW AND CALF | 杜曦明 母子牛

China
Dimensions: 25.38" (64.45cm) W, 20" (50.8cm) L

Scroll painting of a cow and calf group with bamboos. Calligraphy and artist's seal to the left.

杜曦明 母子牛

Estimate \$200 - 300



168 HAN SHUO - DRUNKEN MAN | 韓碩 醉眠圖

China, 20th century
Dimensions: 27" (68.6cm) W, 18" (45.7cm) L

Scroll painting of drunken Han Shuo sleeping beneath a clementine tree.

韓碩 醉眠圖

Note: 韓碩，1945年出生，浙江杭州人。畢業於上海大學美術學院中國畫系。上海中國畫院藝術委員會主任、一級美術師，第七屆中國美術家協會理事，中國美術家協會中國畫藝術委員會委員，上海市美術家協會常務理事、中國畫藝委會主任，上海市文聯委員，上海大學美術學院兼職教授，享受國務院政府特殊津貼。

Estimate \$200 - 300



169 ZHANG SHIJIAN - BIRD AND FLOWERS | 張世簡 花鳥

China, 1966
Ink and Watercolor on Paper
Dimensions: 17" (43.2cm) W, 26" (66cm) L

Scroll painting of bird with multicolored plumage seated below an assortment of flowers and leaves.



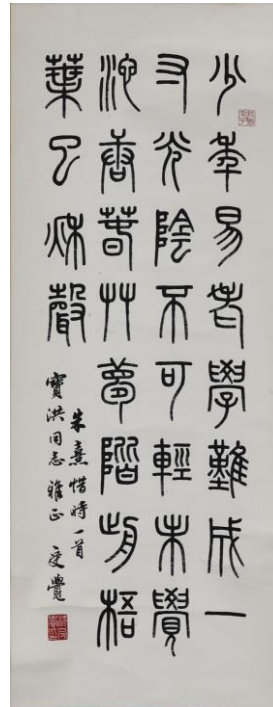
張世簡 花鳥

Note: 張世簡（1926-2009）國畫家。1926年1月出生於浙江省浦江縣禮張村，叔父是中國著名的水墨畫家和美術教育家張振鐸先生（1908-1989），堂兄張書旂先生（1900-1957）是中國近代著名的花鳥畫大師。還有幾位伯父、兄長也都擅長花鳥畫。中央文史研究館館員、國畫家張世簡同志因病於2009年12月4日在北京逝世，享年83歲。

Estimate \$200 - 300

170 CALLIGRAPHY - SHEN SHOUJUE | 沈受覺 隸書

China
Dimensions: 12.5" (31.8cm) W, 9.5" (24cm) L



Clerical script calligraphy hanging scroll. Sealed with 2 artist's seals.

沈受覺 隸書

Note: 沈受覺，江蘇無錫人。無錫江南中學畢業。工書、精篆刻。

Estimate \$200 - 300

171 CALLIGRAPHY - ATTRIB. TO RUAN YUAN | 阮元款 書法

China, Qing dynasty
Ink on Silk
Dimensions: 49" (124.5cm) L, 22" (55.9cm) W

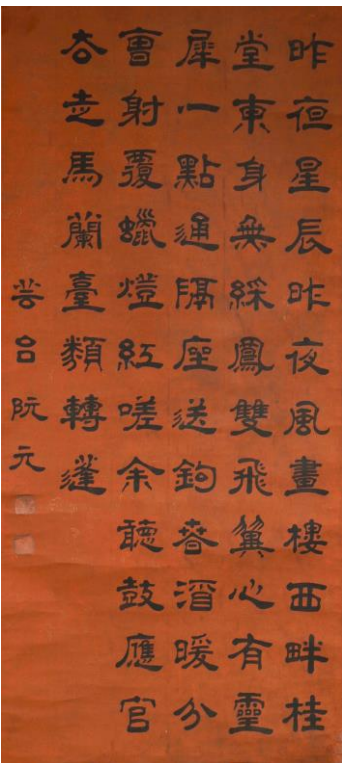
Hanging scroll of li-script calligraphy. 2 artists' seals to the left.

阮元款 書法

Note: 阮元 (1764年 - 1849年), 字伯元, 號芸臺 (一號雲臺), 又號擘經老人、雷塘庵主等, 江蘇儀徵人, 清朝政治人物, 乾嘉學派經學家。

Provenance: Property of a Houston TX Chinese art collector
來源: 德克薩斯州休斯頓中國藝術品藏家私人收藏

Estimate \$2000 - 3000



172 LUO SHUWU - MAGPIES | 喜鵲圖

China
Watercolor and Ink on Paper
Dimensions: 13.5" (34.3cm) L, 54" (137.2cm) W

Hanging scroll depicting two magpies eating lychees and a basket filled with lychees surrounded by several bees. Lengthy calligraphic scripts and the artist's seal to the top.

PLEASE NOTE THIS LOT IS TO BE OFFERED WITHOUT RESERVE.

喜鵲圖

Provenance: Property of a Houston TX Chinese art collector
來源: 德克薩斯州休斯頓中國藝術品藏家私人收藏

Estimate \$200 - 300



Adaptation of Qing ink-rubbing work Shoulingtu. In the center is god of longevity, whose body is comprised of seven calligraphic characters: xing, wai, de, dao, tong, tian, and di (行外得道通天地).

PLEASE NOTE THIS LOT IS TO BE OFFERED WITHOUT RESERVE.

壽星圖

Provenance: Property of a Houston TX Chinese art collector
來源: 德克薩斯州休斯頓中國藝術品藏家私人收藏

Estimate \$200 - 300

173 STUDY OF SHOULAO CALLIGRAPHIC PAINTING AFTER INK RUBBING SHOUXINGTU | 壽星圖

China
Ink on paper, hanging scroll
Dimensions: 26.5" (67.3cm) W, 53" (134.6cm) L

174 CALLIGRAPHY - ATTRIB. LIANG TONGSHU | 梁同書款 書法

China, Qing dynasty, 1802 (cyclically dated)
Ink on Paper, Hanging Scroll
Dimensions: 24" (61cm) W, 50" (127cm) L

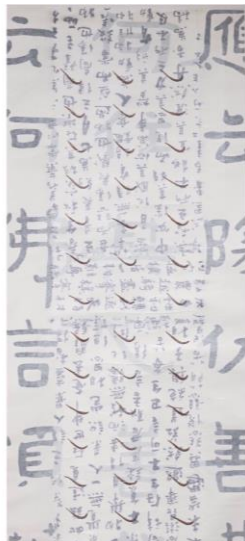
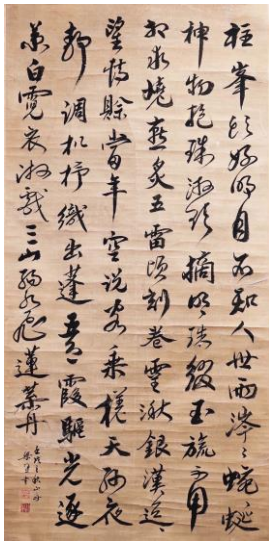
Hanging scroll of calligraphy in cursive script.
Signed, with two seals of the artist.

梁同書款 書法

Note: 梁同書 (1723年 - 1815年), 字元穎, 號山舟, 晚號不翁, 九十以後號新吾長翁。錢塘 (今浙江杭州) 人。清代政治人物、書法家。

Provenance: Property of a Houston TX Chinese art collector
來源: 德克薩斯州休斯頓中國藝術品藏家私人收藏

Estimate \$2000 - 3000



175 " GROUP OF 3 CALLIGRAPHIC PAINTINGS - YANG YANG | 楊洋 当代书法画一组3件"

China, 1999 (cyclically dated)
Ink on Paper, Hanging Scroll
Dimensions:
A: 25.3" (64.3cm) W, 49" (124.5cm) L;
B: 24.8" (63cm) W, 50" (127cm) L;
C: 19.6" (49.9cm) W, 45" (114.3cm) L;

Comprising 3 scrolls of modern calligraphic works.

PLEASE NOTE THIS LOT IS TO BE OFFERED WITHOUT RESERVE.

楊洋 当代书法画一组3件

Provenance: Property of a Houston TX Chinese art collector
來源: 德克薩斯州休斯頓中國藝術品藏家私人收藏

Estimate \$200 - 300

176 2 ALBUM LEAVES OF BIRDS AND FLOWERS- ATTRIB. TO ZHAO SHAO'ANG | 趙少昂款 花鳥圖冊頁2開

China, 20th century
Ink and Watercolor on Paper
Dimensions:
A: 13" (33cm) W, 10" (25cm) L B: 13" (33cm) W, 9" (22.9cm) L

Comprising 2 album leaves depicting birds and flowers. Signed, with 2 artist's seals.

趙少昂款 花鳥圖冊頁2開

Note: 趙少昂 (1905年3月6日 - 1998年1月28日), 原名垣, 字叔儀, 原籍廣東番禺, 中國畫家。與黎雄才、關山月、楊善深並稱為第二代嶺南畫派四大名家。

Estimate \$500 - 700

177 STUDY OF A HAWK, JAPAN | 1990

年代 日本 雄鷹圖

Japan, 1990s
 Ink and Color on Silk Velvet
 Dimensions: 29" (73.7cm) L, 26" (66cm) W

Japanese velvet silk painting depicting a hawk standing on a wooden rack.

PLEASE NOTE THIS LOT IS TO BE OFFERED WITHOUT RESERVE.

1990年代 日本 雄鷹圖

Provenance: Fukumaru Antiques, Gotemba
 來源: Fukumaru Antiques, Gotemba

Estimate \$200 - 300



178 FLOWER AND STONE |

花卉圖

China
 Ink and Watercolor on Paper, Hanging Scroll
 Dimensions: 52.8" (134cm) L, 18" (45.7cm) W

Inscribed, with four seals

PLEASE NOTE THIS LOT IS TO BE OFFERED WITHOUT RESERVE.

花卉圖

Estimate \$200 - 300

179

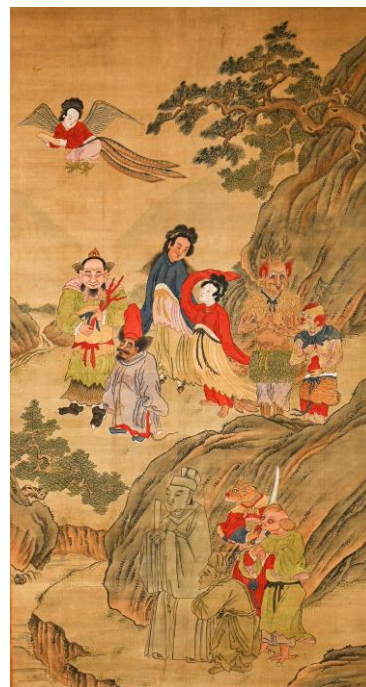
SCHOLAR AND SPIRITS IN MOUNTAIN GENRE PAINTING, 18TH CENTURY | 妖怪異誌圖

Ink and color on silk, 18th century
 Hanging scroll
 Dimensions: 60.5" (153.7cm) L, 30" (76.2cm) W

妖怪異誌圖

Provenance: By repute, Collection of H. F. Leisy, Cleveland OH.
 來源: H. F. Leisy, Cleveland 舊藏

Estimate \$500 - 700



The painting depicts a scholar and his attendant walking in the mountains, surrounded by nine supernatural beings gathered around them. These figures are depicted as spirits of animal and natural matter in their human form. The spirits are painted polychrome to distinguish them from the scholar and his attendant.

PLEASE NOTE THIS LOT IS TO BE OFFERED WITHOUT RESERVE.

180 STUDY OF A CAT - XU WEI | 徐渭款 貓

China
Ink on paper, hanging scroll
Dimensions: 29.5" (74.9cm) L, 9.5" (24.1cm) W

Signed by the artist and inscribed, with two seals.

PLEASE NOTE THIS LOT IS TO BE OFFERED WITHOUT RESERVE.

徐渭款 貓

Note: 徐渭 (1521年3月12日 - 1593年), 字文長, 號青藤老人、青藤道士、天池生、天池山人、天池漁隱、金壘、金回山人、山陰布衣、白鷗山人、鵝鼻山儂、田丹水、田水月, 浙江山陰縣 (今屬浙江紹興市) 人, 明朝文學家、書畫家、軍事家。

Provenance: Collection of well known Canadian artist, patron and collector Leo Rosshandler (1922 - 2020). Mr. Rosshandler's career started in Europe and moved from Mexico City to Manhattan before finally settling in Montreal. Assistant director of the Montreal Museum of Fine Arts in the seventies (to which he has donated the larger part of his vast collection of pre-Columbian art) and later director of the Lavalin Collection until 1989. C. C. Wang 王已千, C. T. Loo 盧芹齋 and other major players in the world of 20th-century Chinese art were great friends of his, and helped to develop Leo's literati taste in Chinese classical painting. Two great Ming masterpieces by Zhu Da 朱耷 (Ba Da Shanren 八大山人) left Leo's collection in the 1980's, sold by Sotheby's New York, and more recently many others have been donated to museums in Canada. This small eclectic group represents the last few works that the Rosshandler's treasured for sentimental and artistic reasons.

來源: 加拿大著名收藏家Leo Rosshandler私人收藏



181 BAMBOOSHOOT-SHAPED YIXING ZISHA TEAPOT, SIGNED JIANG GAOMIN | 紫砂竹筍型水壺 蔣高民款

Dimensions: 3.3" (8.3cm) H, 5.9" (14.9cm) L

Yixing zisha teapot in the shape of a light brown bamboo shoot attached to a brownish base. Signed Jiang Gaomin.

PLEASE NOTE THIS LOT IS TO BE OFFERED WITHOUT RESERVE.

紫砂竹筍型水壺 蔣高民款

Estimate \$200 - 300



182 PAIR OF YIXING ZISHA TEAPOTS, WANG YINXIAN MARK | 汪寅仙款紫砂壺一對

Dimensions: A: 5.3" (13.3cm) H B: 4.3" (10.8cm) H
Comprising two Yixing zisha teapots signed by Wang Yinxian to the bottom. (2pcs)

汪寅仙款紫砂壺一對

Note: 汪寅仙 (1943.6.16-2018.2.28), 女, 漢族, 出生於江蘇省宜興市丁蜀鎮。中國第一批國家級非物質文化遺產項目宜興紫砂陶製作技藝代表性傳承人。

Estimate \$100 - 200



183 TWO YIXING ZISHA TEAPOTS | 宜興紫砂壺兩把

China, 20th century
Dimensions: A: 3.3" (8.3cm) H B: 4.5" (11.4cm) H

Comprising two Yixing zisha teapots with artists' seals at the bottom. (2pcs)

宜興紫砂壺兩把

Provenance: Hong Kong Family Collection in Toronto
來源: 多倫多香港移民家族舊藏

Estimate \$300 - 500



184 TWO YIXING ZISHA TEAPOTS | 宜興紫砂壺兩把

China, 20th century
Dimensions: A: 4.3" (10.8cm) H B: 4.1" (10.5cm) H

Comprising two Yixing zisha teapots with artists' seals at the bottom. (2pcs)

宜興紫砂壺兩把

Provenance: Hong Kong Family Collection, Toronto, Canada

來源: 多倫多香港移民家族舊藏

Estimate \$300 - 500



185 TWO YIXING ZISHA TEAPOTS | 宜興紫砂壺兩把

China, 20th century
Dimensions: A: 5.3" (13.3cm) H B: 4" (10.2cm) H

Comprising two Yixing zisha teapots with artists' seals at the bottom. (2pcs)

宜興紫砂壺兩把

Provenance: Hong Kong Family Collection, Toronto, Canada

來源: 多倫多香港移民家族舊藏

Estimate \$300 - 500



186 TWO YIXING ZISHA TEAPOTS | 宜興紫砂壺兩把

China, 20th century
 Dimensions:
 A: 3.8" (9.5cm) H
 B: 3.6" (9.2cm) H

Comprising two Yixing zisha teapots with artists' seals at the bottom. (2pcs)

宜興紫砂壺兩把

Provenance: Hong Kong Family Collection, Toronto, Canada
 來源：多倫多香港移民家族舊藏

Estimate \$300 - 500



187 TWO YIXING ZISHA TEAPOTS | 宜興紫砂壺兩把

China, 20th century
 Dimensions:
 A: 3.5" (8.9cm) H
 B: 3.3" (8.3cm) H

Comprising two Yixing zisha teapots with artists' seals at the bottom. (2pcs)

宜興紫砂壺兩把

Provenance: Hong Kong Family Collection, Toronto, Canada
 來源：多倫多香港移民家族舊藏

Estimate \$300 - 500

188 TWO YIXING ZISHA TEAPOTS | 宜興紫砂壺兩把

China
 Dimensions:
 A: 5.7" (14.5cm) H
 B: 5.8" (14.7cm) H

Comprising two Yixing zisha teapots with artists' seals at the bottom. (2pcs)

宜興紫砂壺兩把

Provenance: Hong Kong Family Collection, Toronto, Canada
 來源：多倫多香港移民家族舊藏

Estimate \$300 - 500



189 TWO YIXING ZISHA STONEWARE TEA POTS | 宜興紫 砂壺2把

Dimensions:

A: 3.75" (9.5 cm) H, 4.88" (12.5 cm) W

B: 3.88" (9.8 cm) H, 5.32" (13.5 cm) W

The lot includes two Yixing zisha teapots from two different artists: one carved with ground vine relief and the other with floral relief, both base carved with artists' four-character seal. (2pcs)

宜興紫砂壺2把

Note:

王建芬，1981年出生於江蘇省宜興市丁蜀鎮，中前輩花器潛力新秀，師從實力派花器名家嚴強老師，擅長全手花器。學校畢業後從藝紫砂製作，其花器作品構思巧妙，刻畫細膩，具有濃郁的生活氣息。

Estimate \$300 - 500



191 TRIBUTARY YIXING ZISHA TEAPOT, LATE QING DYNASTY | 晚清 貢局款宜興紫砂壺

China, 18-19th century

Dimensions: 9.5" (24.1cm) H

Tributary Yixing zisha teapot and lid with brown speckled glaze and metal handle.

晚清 貢局款宜興紫砂壺

Estimate \$700 - 900



190 YIXING ZISHA TEAPOT FUJI MARK, QING DYNASTY | 清「福記」 款貢局紫砂壺

China, Qing Dynasty, 18-19th century

Dimensions:

8" (20.3cm) H, without handle: 6" (15.2cm) H

Note: 清代宜興紫砂壺上的款識。本世紀30年代李景康、張虹編《陽羨砂壺圖考》「貢局壺」條記載：「考林古度為馮本卿作《陶寶肖像歌》有「荊溪陶正司陶復」之句，可知陽羨貢局已創於明代。細考傳器，各色泥質俱備，壺底或刻字，或印，或只年號，或用「貢局」二字，亦有僅用一「局」字者。」書中著錄3件朱泥壺，底部分別刻「康熙貢局」、「雍正貢局」行書款或「雍正貢局」楷書款。實物見於清光緒時泰國拉瑪五世在中國宜興訂燒一批紫砂壺，壺底均印有泰國訂燒標記和楷書「貢局」二字，壺蓋和壺柄印陶工名款。

清「福記」款貢局紫砂壺

Provenance: Taiwanese Family Collection in Toronto

來源：臺灣移民藏家

Estimate \$600 - 800





192 BURMESE ROSEWOOD CARVED SQUARE STOOL | 20世紀 白酸枝方凳

China, 20th century
 Dimensions: 20" (50.8cm) H

Burmese rosewood carved square stool with horsehoof legs and carved pairs of cherries in low relief.

20世紀 白酸枝方凳

Estimate \$300 - 500



193 WOOD CARVED ARHAT BED, 20TH CENTURY | 20世紀 實木羅漢床

China, 20th century
 Dimensions: 81" (205.7cm) W, 38.5" (97.8cm) L, 36" (91.4cm) H

Wood carved Arhat bed decorated with foliage relief.

20世紀 實木羅漢床

Estimate \$300 - 500



194 PAIR OF HARDWOOD CARVED CHAIRS | 雕花太師椅一對

Dimensions: 23.5" (59.7cm) W, 17.8" (45.2cm) L, 42.4" (107.7cm) H

A pair of carved hardwood armchairs with openwork floral and bat decoration on the back. (2pcs)

雕花太師椅一對

Estimate \$300 - 500



195 ROSEWOOD CARVED MARBLE INLAID DAYBED, 20TH CENTURY | 20世紀 紅木嵌大理石長椅

China, 20th century
 Dimensions: 68" (172.7cm) W, 21.4" (54.3cm) L, 40.5" (102.9cm) H

Rosewood carved marble inlaid daybed decorated with carving of the three Taoist deities fu, lu, and shou.

20世紀 紅木嵌大理石長椅

Estimate \$500 - 700



196 PAIR OF ROSEWOOD CARVED OPENWORK ARMCHAIRS, 20TH CENTURY | 20世紀 紅木鏤雕官帽椅一對

China, 20th century
 Dimensions: 24.8" (62.9cm) W, 18.5" (47cm) L, 38.7" (98.3cm) H

A pair of rosewood carved armchairs decorated with openwork carving of flowers and scholarly vases to the back and side. (2pcs)

20世紀 紅木鏤雕官帽椅一對

Estimate \$500 - 700



198 PAIR OF JICHIMU 'OFFICIAL HAT' ARMCHAIRS | 雞翅木官帽椅一對

China
 Dimensions: 23" (58.4cm) W, 17.9" (45.5cm) L, 37.5" (95.3cm) H (2)

A pair of jichimu 'official hat' armchairs decorated with curving arms and openwork back. (2pcs)

雞翅木官帽椅一對

Estimate \$400 - 600

197

HARDWOOD CARVED MULTI-DRAWER CABINET, QING DYNASTY | 清 榆木雕花五門櫃



China, Qing Dynasty
 Dimensions: 42.3" (107.3cm) W, 21.5" (54.6cm) L, 33.3" (84.5cm) H

Hardwood carved multi-drawer cabinet decorated with foliage carving.

清 榆木雕花五門櫃

Estimate \$500 - 700



199 SET OF 4 ROSEWOOD SIDE TABLE STANDS | 紅木雕花茶幾一組四件

China
 Dimensions:
 A: 20" (50.8cm) W, 14.5" (36.8cm) L, 28.3" (71.8cm) H
 B: 17.5" (44.5cm) W, 12.5" (31.8cm) L, 24.6" (62.5cm) H
 C: 15.3" (38.9cm) W, 11" (27.9cm) L, 20.5" (52.1cm) H
 D: 13" (33cm) W, 9.25" (23.5cm) L, 16.9" (42.9cm) H

Comprising 4 rosewood side stands of various sizes decorated with carved openwork aprons. (4pcs)

紅木雕花茶幾一組四件

Estimate \$500 - 700

200 PAIR OF HUANGHUALI CARVED ARMCHAIRS TOGETHER WITH A SIDE TABLE | 黃花梨木圈椅一對及茶幾

China

Dimensions:

A: 24.3" (61.7cm) W, 18.9" (48cm) L, 39.5" (100.3cm)

H (2)

B: 18.1" (46.1cm) W, 14.3" (36.2cm) L, 28.5"

(72.4cm) H

Comprising a pair of huanghuali carved armchairs with script-like decoration to the back; together with a huanghuali carved side table decorated with openwork apron. (3pcs)

黃花梨木圈椅一對及茶幾

Estimate \$2000 - 3000



201 RECTANGULAR HARDWOOD CARVED KANG TABLE | 硬木案桌

China

Dimensions: 53.5" (135.9cm) W, 16" (40.6cm) L, 31.5" (80cm) H

Rectangular hardwood kang table with carved waist and aprons.

硬木案桌

Estimate \$500 - 700



202 HUANGHUALI CARVED THREE-SEATER SOFA | 花梨木雕螭龍沙發

China

Dimensions: 67" (170.2cm) W, 22" (55.9cm) L, 33.5" (85.1cm) H

Huanghuali carved three-seater sofa decorated with openwork chilong carving.

花梨木雕螭龍沙發

Estimate \$700 - 1000





203 SET OF 8 SILVER NAPKIN BANDS | 銀質餐巾箍八個

Dimensions: 1.8" (4.5cm) Dia
233g Weight

Set of 8 silver napkin bands decorated with various patterns. (8pcs)

銀質餐巾箍八個

Estimate \$200 - 300



204 STERLING SILVER-PLATED OPENWORK PLATE | 鍍銀雕花盤

Dimensions: 12.3" (31.2cm) Dia, 11.5" (29.2cm) W,
13"(33cm) L

A sterling silver-plated plate with openwork floral decoration.

鍍銀雕花盤

Estimate \$100 - 200



