

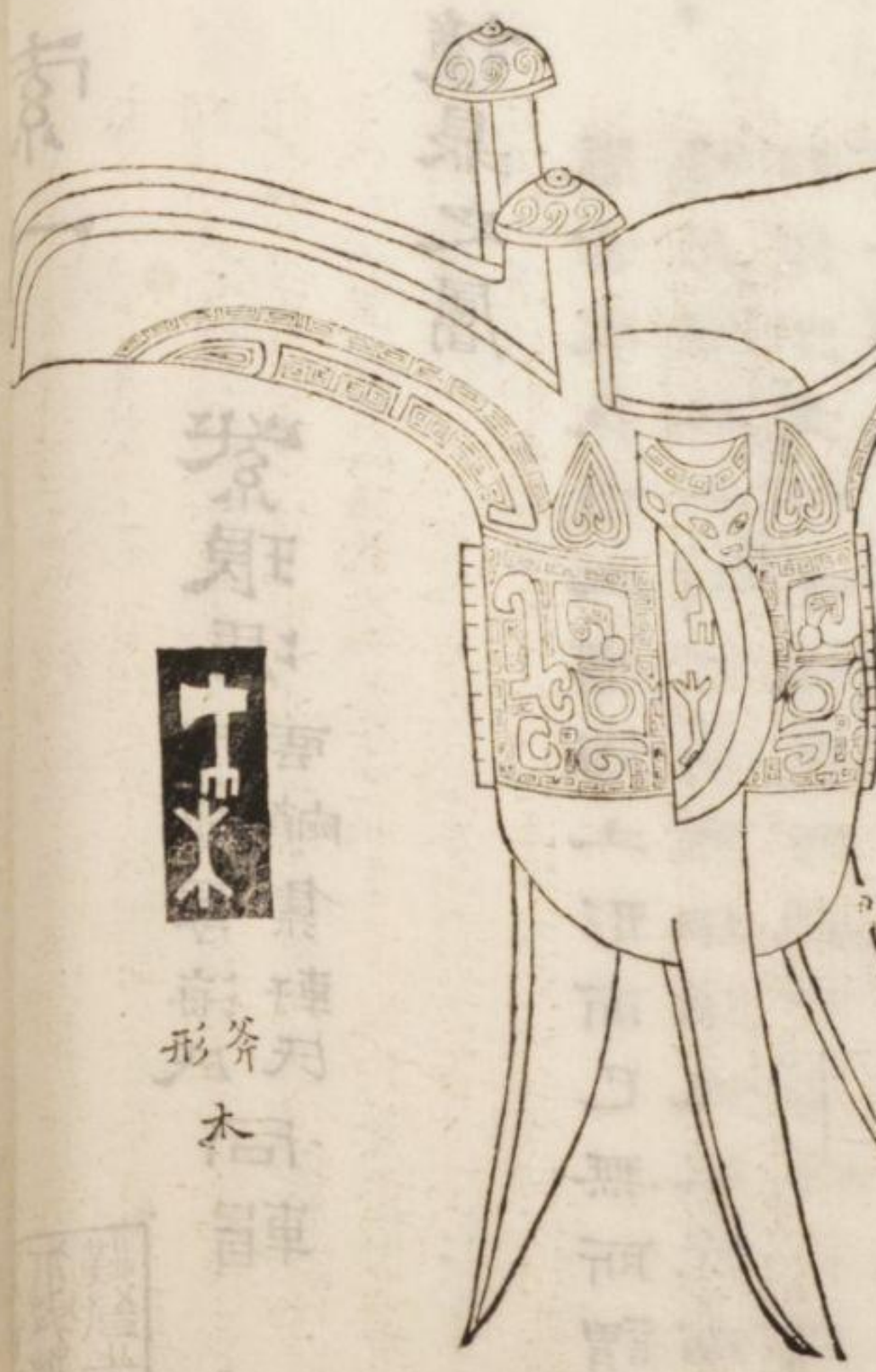


ARNAUD'S
Auctions & Appraisals

ARNAUD'S ANNIVERSARY AUCTION



Asian Fine Art
August 15th, 2022



斧木
形

右商爵一以漢建初尺度之連柱高八寸八分口径長七寸六分潤三寸三分重今庫砧二十四兩三錢兩柱三足有流有鑿銘二字曰斧木在其鑿之內鵬于嘉慶二十年夏得之平陵按商器有斧爵有木觥此與相侶也商制也博古錄云爵之字通於雀前若喙後若尾兩柱為耳足備而銳若戈形然求之禮圖則刻木作雀形背負琖是漢儒臆說使觀此



ARNAUD'S GALLERY

Asian Fine Art Auction

Anniversary Asian Fine Art Auction – SALE 105
August 15, 2022

Doors Open 5:30 pm ET

Auction Starts 6:00 pm ET / Markham

Lots 001 – 256

Preview Times

11:00am-5:00 pm ET August, 12 2022

11:00am-5:00 pm ET August, 13 2022

11:00am-5:00 pm ET August, 14 2022

11:00am-2:00 pm ET August, 15 2022

To view our online catalogue and sign up to bid, please visit www.arnaudsgallery.com or the following sites:

- Liveauctioneers.com
- Arnaudsgallery.hibid.com
- 51bidlive.com
- Auctionhome.cn

Buyers intending to attend the live sale in-person are required to reserve in advance as seating is limited.

Contact Us



Manager of Asian Art Department
Iris Wu
asianart@arnaudsgallery.com

In-person preview by appointment only

Please book an appointment by scanning the QR code on the left or visiting [Arnaud's Bookings](#). Government of Ontario COVID-19 Health and Safety measures are in effect.

Property Pick-Up Hours

By Appointment Only. Please book an appointment by scanning the QR code on the right or visiting [Arnaud's Bookings](#)



DYNASTIC CHRONOLOGY OF CHINA

Xia Dynasty	夏	2100 – 1600 BCE
Shang Dynasty	商	1600 – 1046 BCE
Western Zhou Dynasty	西周	1046 – 771 BCE
Eastern Zhou Dynasty	東周	770 – 256 BCE
Spring and Autumn Period	春秋	722 – 476 BCE
Warring States Period	戰國	475 – 221 BCE

IMPERIAL DYNASTIES

Qin Dynasty	秦	221 – 206 BCE
Western Han Dynasty	西漢	206 BCE – 9 CE
Xin Dynasty (Interregnum)	新	9 – 26
Eastern Han Dynasty	東漢	25 – 220
Three Kingdoms	三國	220 – 265
Western Jin Dynasty	西晉	265 – 317
Eastern Jin Dynasty	東晉	317 – 420
Southern & Northern Dynasties	南北朝	420 – 581
Sui Dynasty	隋	581 – 618
Tang Dynasty	唐	618 – 907
Five Dynasties & Ten Kingdoms	五代十國	907 – 960
Northern Song Dynasty	北宋	960 – 1127
Southern Song Dynasty	南宋	1127 – 1279
Liao Dynasty	遼	916 – 1125
Jin Dynasty	金	1115 – 1234
Yuan Dynasty	元	1271 – 1368
Ming Dynasty	明	1368 – 1644
Qing Dynasty	清	1644 – 1912
Republican Period	民國	1912 – 1949



SPECIAL ASIAN ART NOTICES

HOW TO REGISTER YOUR ACCOUNT

Before you can bid, you will need to create an account with Arnaud's. Once you have an account, whether you plan to bid in person or online, you can register for any sale in advance through your online accounts.

Documents needed to verify your identity when creating your account:

For Private individuals

A copy of:

- your passport or other government-issued photo ID; and
- proof of your residential address (such as a bank statement or utility bill) dated within the last three months.

For Organizations

A copy of formal documents evidencing:

- the organisation's incorporation
- its registered office and business address
- authorization for the individuals allowed to bid on behalf of the organisation, plus a copy of the government-issued photo ID for each authorised individual.

Financial references

You may also be asked for a financial reference and/or a deposit as a condition of allowing you to bid, particularly on extremely high value lots.

HOW TO BID

Online Auctions

We conduct the majority of our auctions online, offering selected works at attractive price points.

When registering to bid in an Online auction, you will be asked to register your credit card information. You will receive a link to pay online once your bid is successful. Otherwise, your credit card will not be automatically charged.

Please note:

- You cannot cancel a bid once it has been submitted. Each bid you place enters you into a binding contract with Arnaud's.
- If a bid is placed within five minutes of the closing time of a lot, five additional minutes will be added to the designated closing time for that lot. Please note that the extension of one lot's closing time does not affect other lots' closing times.

Live Auctions

Bid in Person

If you prefer to bid in person, you can register in advance by contacting Arnaud's Client Services. We encourage you to register at least 24 hours in advance of a sale to allow sufficient time for completing this process. To register for live auctions, you need to bring your photo ID and a proof of address to our office. If you prefer to register online, please contact Arnaud's Client Services via email or phone.

Telephone bidding

If you prefer to bid by telephone, you can register with an Arnaud's representative who will call you during the auction. We recommend that you consider leaving an 'emergency absentee bid' before an auction begins in case we are not able to reach you when the auction happens.

To register for a telephone bid, please contact Client Services for assistance.

Absentee Bid

If you are unable to attend an auction, you can simply register an absentee bid at least 24 hours prior to the sale with our Client Services office who will bid on the item for you. An absentee bid left in advance takes priority over the same bid amount in the room or on the telephones. If your bid exceeds the seller's minimum reserve, the auctioneer will try to win the item for you at the lowest price they can.

- 5 You may place an absentee bid via your online account, or by calling Client Services. You will need to fill out the Absentee Bid Form PDF and return it to Arnaud's Client Services.



3-DRAWERS WOOD CARVED CABINET

Dimensions: 18" (45.7cm) L, 71 1/2" (181.6cm) W, 29" (73.7cm) H

Decorated with flower-shaped handles and foliage patterns.

实木雕花柜

Estimate \$50-\$100

001

WOOD AUDIO CABINET

Dimensions: 21 1/2" (54.6cm) L, 72" (182.9cm) W, 26" (66cm) H

实木电视柜

Estimate \$50-\$100

002



WOOD LOW TABLE

Dimensions: 18" (45.7cm) L, 47 1/2" (120.7cm) W, 26" (66cm) H

Supported with four carved cabriole legs.

木雕长几

Estimate \$50-\$100

003



RECTANGULAR MARBLE TABLE



Dimensions: 27 1/2" (69.9cm) L, 47 1/2" (120.7cm) W, 16" (40.6cm) H

Rectangular marble table supported by a reversed triangular panel.

大理石方桌

Estimate \$200-\$300

004



005



SET OF 2 LEATHER SOFAS AND 3 TABLES

Dimensions: Sofa: 31" (78.7cm) L, 37 1/2" (95.3cm) W, 35" (88.9cm) H (2); Tabel: 25 1/2" (64.8cm) L, 45" (114.3cm) W, 17" (43.2cm) H; 27 1/2" (69.9cm) L, 27 1/2" (69.9cm) W, 19" (48.3cm) H (2)

Comprising 2 leather sofas and 3 wood tables with marble panels. (5pcs)

真皮沙发套组

Estimate \$200-\$300



HARDWOOD CARVED DISPLAY CABINET WITH CUPBOARD AND DRAWERS

Dimensions: 20" (50.8cm) L, 72" (183cm) W, 96" (243.8cm) H

Decorated with foliage patterns on the top.

硬木雕花酒柜

Estimate \$300-\$500

006

RIDGEWAY ANTIQUE COPPER PENDULUM WOODEN GRANDFATHER FLOOR STANDING CLOCK CABINET

Dimensions: 12" (30.5cm) L, 32 1/2" (82.6cm) W, 85" (215.9cm) H

The panel of the clock decorated with foliage patterns and the top of the panel decorated with a semi-spherical of the night sky and the earth.

古董铜摆木制祖父落地钟柜

Estimate \$300-\$500



007



CHINESE HARDWOOD DISPLAY CABINET WITH CUPBOARD AND DRAWERS

China

Dimensions: 19" (48.3cm) L, 72" (183cm) W, 79" (200.7cm) H

Decorated with shou-character patterns.

硬木四开门酒柜

Estimate \$500-\$700

008

HUANGHUALI BOX STOOL WITH "GIANT'S ARM BRACES", LATE QING

China, late Qing dynasty

Dimensions: 15 3/4" (40cm) L, 15 3/4" (40cm), 18 1/8" (46cm) H

Huanghuali wood carved cubic stool with bamboo woven cushion on top.

Compare with A Huanghuali Stool, Mid Qing Dynasty, Bonhams London, 17May2018, Lot 94

<https://www.bonhams.com/auctions/24525/lot/94/?category=list>

晚清 黄花梨竹编方凳



009



DINING TABLE SET WITH 8 CHAIRS

Dimensions: Tabel: 80" (203cm) L, 42" (106.7cm) W, 30" (76.2cm) H (with glass);
Chairs: 18" (45.7cm) L, 21 1/2" (54.6cm) W,
40 1/2" (103cm) H (2); 16" (40.6cm) L, 17 1/2" (44.5cm) W, 40 1/2" (103cm) H (6)

Comprising a long dining table and 8 armed chairs. (9pcs)

餐桌椅一套

Estimate:\$1200-\$1500

010



011

WOVEN RED TRADITIONAL PERSIAN MEDALLION FLORAL AREA RUG

Dimensions: 144" (365.8cm) W, 120" (304.8cm) L

Rectangular woven rug decorated with floral patterns.

传统波斯风格花卉编制地毯

Estimate:\$400-\$600

FAMILLE ROSE FIGURAL BOTTLE VASE



China

Dimensions: 14 1/4" (36cm) H

Decorated with four sides depicting boys playing with each other, enclosed by floral and leafy motifs in underglaze red.

粉彩人物菱形瓶

Estimate: \$100-\$300

012

013



Dehua Blanc-de-Chine Statue of A Fluting Boy on A Bull, Republican Period

China, Republican period

Dimensions: 9 3/8" (24cm) H

Depicts a boy with a bucket hat on his back playing a flute on the back of a bull.

民国 德化牧童与牛白瓷塑像

Estimate: \$100-\$300



2 Porcelain Panel of Cultural Revolution Propagated Figures

China, 20th century

Dimensions: 9 7/8" (25cm) L, 14 1/4" (36.2cm) W

Comprising 2 porcelain panels depicting propaganda figures during the Cultural Revolution. (2pcs)

文革题材瓷版画2件

Estimate:\$100-200

014

015



Famille Rose Floral Barbed Rim Bowl

China

Dimensions: 6 1/2"(16.51cm) Dia, 2.5"(6.35cm) H

Famille rose bowl with barbed rim, the exterior decorated with various floral and leafy motifs, the interior decorated with a peach pattern, seal in underglaze red to the base.

粉彩花卉纹葵口碗

Estimate: \$200-\$300

**Copper Red Crackle Glazed Vase
TOGETHER WITH Famille Rose
Landscape Vase**



China

Dimensions: 8 3/8"(21.08cm) H

Comprising a copper-red crackle-glazed baluster vase; together with a famille rose landscape vase decorated with calligraphic inscription, Jingdezhen mark to the base.

豇豆红釉观音瓶和粉彩山水瓶

Estimate: \$200-300

016

Pair of Export Turquoise Glazed Figures of Phoenix, Republican Period

China, Republican period
Dimensions: 12" (30.5cm) H (2)

Pair of export turquoise-glazed
openwork statues of phoenix. (2pcs)

民国 出口松石绿釉凤凰一对

Estimate: \$200-300



017



**PAIR OF TURQUOISE
GLAZED OPENWORK
ALTAR DISH STANDS,
QING DYNASTY**

China, late Ming dynasty to Qing dynasty,
17th century

Dimensions: 4 1/8" (10.5cm) H (2)

Pair of turquoise glazed altar dish stands
decorated with openwork coin-shaped
patterns. (2pcs)

Provenance: Private Collection, Denver

清 镂空松石绿釉支架一对

Estimate:\$200-300

018

**CHINESE EXPORT FAMILLE ROSE CANTON MEDALLION
TANKARD, LATE QING DYNASTY, EARLY 19TH CENTURY**

China, late Qing dynasty, early 19th century
Dimensions: 5 1/4" (13.3cm) H, 3 3/4" (9.5cm) Dia

Famille rose medallion tankard for the export market,
decorated on the exterior with a domestic pictorial
scene, attached to a gilded handle.

晚清出口 粉彩鎏金庭院人物杯

Estimate:\$200-300



019



020

Blue White Deer Bowl, Ming Dynasty, Wanli Period, ca 1600

China, Ming dynasty, Wanli period, ca 1600
Dimensions: 2 1/2" (6.4cm) H, 5" (12.7cm) Dia

Blue-and-white cup decorated with landscape of deer and birds on the exterior, the center of interior decorated with a flower roundel.
There is a restoration around the area of the fence.

明万历 青花鹿纹杯

Estimate:\$200-300



Famille Rose Pheasant Tazza Stem Cup, Republican Period, Early 20th Century

China, Republican period, early 20th century
Dimensions: 5" (12.7cm) H, 5 1/4" (13.3cm) Dia

The rounded sides rising to a slightly flared rim, resting on a hollow splayed foot, the exterior painted with pheasant, flowers, and calligraphic inscriptions.

民国 粉彩雉鸡花卉图高足杯

Estimate:\$200-300

021



FAMILLE ROSE FIGURAL BOWL AND COVER, TONGZHI MARK, REPUBLICAN PERIOD, EARLY 20TH CENTURY

China, Republican period, early 20th century

Dimensions: 5 3/4" (14.6cm) H

Decorated with an imperial figure (possibly the prince) riding on a qilin with a boy in his arms, accompanied by another boy attendant, the lid decorated with two female attendants. Four-character Tongzhi seal mark in underglaze red.

民国 粉彩人物盖碗

Estimate:\$200-300

022

YELLOW GLAZED CONJOINED TRIPLE GOURD VASE (LAMPED), 20TH CENTURY

China, 20th century

Dimensions: 26" (66cm) H

Yellow glazed lamped vase in the shape of a triple gourd.

20世纪 黄釉葫芦三联瓶灯座

Estimate:\$200-300



023

**TURQUOISE-GLAZED EIGHT TRIGRAMS
BOTTLE VASE, QIANLONG MARK, QING
DYNASTY**



China, Qing dynasty
Dimensions: 7 3/4" (19.7cm) H

Moulded on each side with the Eight Trigrams, Bagua, below a short diamond-shaped neck, covered with a turquoise glaze. Base left unglazed. Six-character Qianlong seal mark.

Provenance: Private Collection, USA

清 孔雀蓝釉菱形四方八卦纹瓶 大清乾隆年制款

Estimate:\$700-\$900

024

DEHUA BLANC-DE-CHINE DEER CUP

China
Dimensions: 2" (5.1cm) H

Dehua Blanc-de-Chine wine cup decorated with deer, birds, and flower blossom.

Provenance: Private Collection, USA

德化白釉鹤鹿同春花口杯

Estimate:\$700-\$900



025



026

FAMILLE ROSE SNOWY LANDSCAPE DISH, JINGDEZHEN MARK

China

Dimensions: 10.6" (26.8cm)L, 7.5" (19cm)W, 0.9" (2.3cm)H

Famille rose dish decorated with painted landscape in snow to the interior with a tile of floral motif to the rim. Four-character Jingdezhenzhi seal mark in underglaze blue to the base, together with four-character Xunluocanting mark in underglaze red.

粉彩雪景图盘 景德镇款

Estimate:\$200-\$300



027

SET OF 3 FAMILLE ROSE BIRDS AND FLOWERS DISHES, REPUBLICAN PERIOD

China, Republican period

Dimensions: (1,2) 4 1/4" (10.8cm) Dia, (3) 7 1/8" (18.1cm) Dia

Comprising a famille rose plate decorated with birds and flowers, with the artist's signature and seal, the rim decorated with a tile of green plum blossom, seven-character Jiangxi wangruichang chupin seal mark in underglaze red to the base; together with a pair of famille rose floral dishes with barbed rim and tall foot. (3pcs)

民国 粉彩花口盘一对和粉彩花鸟纹盘一只

Estimate:\$200-\$300

**SET OF A SACRIFICIAL BLUE
GLAZED COVERED JAR AND A
HULU-SHAPED VASE, QING
DYNASTY**

China

Dimensions: 15 1/2" (39.8cm) H

Of globular body decorated with butterfly of various kinds, the shoulder decorated with a tile of floral patterns. Six-character Guangxu seal mark in underglaze red.

粉彩百蝶赏瓶 大清光绪年制款

Estimate:\$200-\$300

028



**FAMILLE ROSE BIRDS AND
FLOWERS JAR, LATE QING
DYNASTY**

China, late Qing dynasty

Dimensions: 11 3/8" (29cm) H

Decorated with a pair of birds enclosing a rockery and flowers, the back is adorned with a pomegranate-shaped window depicting an antique vase, and below is a fan-shaped window depicting flowers and a rockery.

晚清 粉彩花鸟盖罐

Estimate:\$700-\$900

029





FAMILLE ROSE BUTTERFLY BALUSTER VASE, GUANGXU MARK

China

Dimensions: 15 1/2" (39.8cm) H

Of globular body decorated with butterfly of various kinds, the shoulder decorated with a tile of floral patterns. Six-character Guangxu seal mark in underglaze red.

粉彩百蝶赏瓶 大清光绪年制款

Estimate: \$700-\$900



030

031



PAIR OF YELLOW GLAZED INCISED DRAGON ZUN-SHAPED VASES, QIANLONG MARK, QING DYNASTY

China, Qing dynasty

Dimensions: 6 3/4" (17.1cm) H (2)

Pair of yellow glaze zun-shaped vases decorated with incised dragon patterns, the neck attached with a pair of tubular handles, the body flanked by a pair of dragon-head handles, six-character Qianlong seal mark to base. (2pcs)

清 黄釉暗刻龙纹瓶一对 乾隆年制款

Estimate: \$800-\$1000

FAMILLE ROSE FIGURAL AND INSCRIBED COVERED JAR

China

Dimensions: 20" (50.8cm) H

Of octagonal body with pagoda-shaped lid, the lid decorated with the Taoist Eight Emblems, the body decorated with Taoist figures and cursive calligraphic scripts, the neck attached with four lion-head handles.

粉彩道家人物八角盖罐

Estimate:\$1000-\$1500



032



APPLE-GREEN-GROUND FAMILLE ROSE PORCELAIN VASE, JIAQING MARK

China

Dimensions: 14" (35.6cm) H

Of globular shape, the body decorated with green-apple glaze with four windows depicting flowers and lanterns, Jiaqing seal mark in underglaze blue.

绿地花卉纹开光花瓶 大清嘉庆年制款

Estimate:\$1000-\$1500

033



034

PAIR OF IRON RED ENAMELLED PHOENIX ROUNDEL CUPS, QIANLONG MARK, REPUBLICAN PERIOD, 20TH CENTURY

China, Republican period, 20th century
 Dimensions: 3 1/8" (7.9cm) H, 3 1/4" (8.3cm) Dia (2)

Pair of blue-and-white cups decorated with iron-red enameled phoenix roundels and tiles of geometric motifs to the rim and bottom. Six-character Qianlong seal mark to the bottom. (2pcs)

民国 青花矾红团凤纹杯一对 乾隆款

Estimate:\$1000-\$1200

FAMILLE ROSE PORCELAIN PANEL OF WHITE SNAKE STORY - BATTLE AT JINSHAN TEMPLE, REPUBLICAN PERIOD, 20TH CENTURY

China, 20th century
 Dimensions: 17 1/2" (44.5cm) L, 12 1/4" (31.1cm) W

Famille rose porcelain panel depicting the narrative scene of the battle at Jinshan Temple in 'White Snake Story', with four character shuijinjinshan to the top.

20世纪 粉彩白蛇传瓷板画

Estimate:\$1000-\$1500



035



GE-TYPE CRACKLE GLAZE BOTTLE VASE, QING DYNASTY OR EARLIER

China, Qing dynasty or earlier
Dimensions: 5 7/8" (14.9cm) H

Of a bulbous body with a sloping shoulder rising to a cylindrical neck, overall covered in a grey-brownish crackled glaze.

Provenance: Private Collection, New York, USA

清或更早 仿哥釉直颈瓶

Estimate:\$1000-\$1500

036

037

PAIR OF FAMILLE ROSE FLORAL JARS WITH COVERS, QING DYNASTY

China, Qing dynasty
Dimensions: 8 3/8" (20.1cm) H
(with cover)

A pair of famille rose covered jars decorated with floral and scrolling leaf motifs, covers decorated with floral and geometric patterns. (2pcs)

清 粉彩花卉纹盖罐一对

Estimate:\$1200-\$1500





**KANGXI STYLE FAMILLE VERTE
FIGURAL BRUSH POT, QING DYNASTY,
19TH CENTURY**

China, Qing dynasty

Dimensions: 4 7/8" (12.4cm) H, 3 7/8" (9.8cm) Dia

Famille verte brush pot decorated with a narrative scene of a scholar followed by a boy attendant facing a peasant in the mountains.

清 五彩人物笔筒

Estimate:\$1200-\$1500

038

**FAMILLE ROSE DRAGON FIGURAL
VASE, REPUBLICAN PERIOD**

China, Republican period

Dimensions: 12 3/4" (32.4cm) H

Decorated with rectangular windows depicting courtesans in gardens and calligraphic inscriptions, enclosed by floral motifs on a black ground, base covered in turquoise glaze. Four-character Qianlongyuzhi seal mark to the base.

Provenance: Private Collection, USA

民国 粉彩人物开光龙瓶

Estimate:\$1200-\$1500



039



BLUE-AND-WHITE 'LOTUS' DISH, QING DYNASTY, GUANGXU MARK AND PERIOD

China, Qing dynasty, Guangxu Mark and Period (1875-1908)

Dimensions: 6 1/4" (15.9cm) Dia

This bowl is decorated to the exterior and to the interior with lotus heads on a ground of stylised scrolls. Six-character Guangxu mark in underglaze blue.

Compare with A Blue and White Lotus Dish, Christie's London, 11May2017, Lot 432.

<https://www.christies.com/lot/lot-6072962>

Provenance: Private Collection, Ohio, USA

大清光绪年制 青花缠枝莲纹盘

Estimate:\$1000-\$1500

040



YELLOW-GROUND SANCAI DRAGON DISH, QING DYNASTY, GUANGXU MARK AND PERIOD

China, Qing dynasty, Guangxu Mark and Period

Dimensions: 5 3/4" (14.6cm) Dia

The interior is decorated with two five-clawed dragons in pursuit of the flaming pearl. The exterior is incised and enamelled in green with four cranes in flight amongst four scrolling clouds.

Compare with A Chinese Green and Aubergine-Decorated Yellow-Ground 'Dragon' Dish, Christie's London, 5AUG2020, Lot 56.

<https://onlineonly.christies.com/s/note-self-art-contemplation/chinese-green-aubergine-decorated-yellow-ground-dragon-dish-56/93772>

Provenance: Private Collection, Ohio, USA

大清光绪年制 黄地素三彩龙纹盘

Estimate:\$1500-\$2000



041



CRACKLED GREEN GLAZED HU VASE, QING DYNASTY

China, Qing Dynasty
Dimensions: 11 3/4" (29.8cm) H

Of globular body, tall foot, and narrow neck flanked by a pair of tubular handles, the body covered by crackled green glaze.

清 苹果绿釉贯耳瓶

Estimate: \$1000-\$1500

042

CORAL RED AND GILT MELON FORM VASE

China
Dimensions: 14 1/2" (36.83cm) H

Of melon-shaped body, the exterior covered in a coral red glaze with gilt decorations of plum blossom and birds.

矾红描金瓜形花瓶

Estimate: \$2000-\$3000



043

FLAMBE TRANSMUTATIONAL GLAZED O-SHAPED CHILONG VASE, QING DYNASTY

China, Qing dynasty
Dimensions: 8 1/8" (20.6cm) H

Of O-shaped body covered by flambe transmutional glaze in blue and white, the vase decorated with moulded chilong and floral patterns.

清 窑变釉龙纹"O"型瓶

Estimate:\$1000-\$1500

044





045

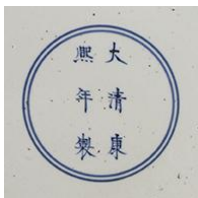
EXPORT FAMILLE ROSE GILT FIGURAL PUNCH BOWL, QING DYNASTY

China, Qing dynasty, Qianlong period
Dimensions: 11 1/2" (29.2cm) Dia

Famille rose gilt punch bowl for oversea market; the exterior decorated with four windows depicting figural narrative scenes, the interior decorated with a tile of floral and leafy motifs to the rim and a roundel of figures to the center.

清乾隆 粉彩出口人物故事大碗

Estimate:\$1000-\$2000



FAMILLE VERTE DRAGON AND PHOENIX DISH, KANGXI MARK, QING DYNASTY

China, Qing dynasty
Dimensions: 17 1/4" (43.8cm) Dia

Famille verte dish decorated with dragon and phoenix motifs, the reverse decorated with floral motifs, six-character Kangxi seal mark in underglaze blue.

清 五彩麒麟凤纹盘 康熙年制款

Estimate: \$2000-\$2500

046



WHITE JADE CARVED LENTILS PENDANT

China

Dimensions: 3 1/4" (8.3cm) L ; 2" (5.1cm) W

White jade carved pendant of leaves and lentils.

白玉雕扁豆挂件

Estimate:\$200-\$300

047

JADE CARVED GOURD WITH CICADA

China

Dimensions: 2 3/4" (7cm) H

Jade carving of a cicada on a gourd.

玉雕夏蝉葫芦

Estimate:\$200-\$300

048



TWO JADE CARVED PENDANTS

China

Dimensions: 1 5/8" (4.1cm) L; 2" (5.1cm) H

Comprising a jade carved lingzhi fungus pendant; together with a jade peach-shaped pendant carved in the shape of a fish basket with a black bat. (2pcs)

玉雕挂件2件

Estimate:\$200-\$300

049



050



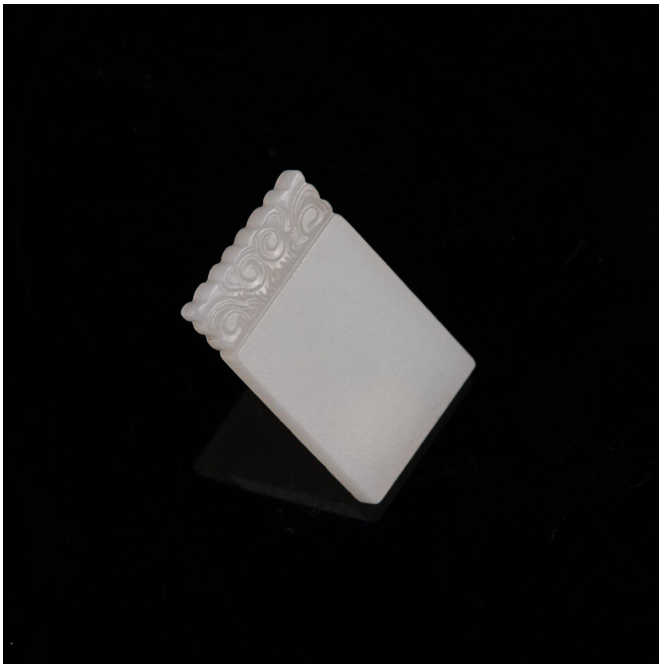
YELLOW JADE DRAGON AND QILONG BELT BUCKLE, LATE QING DYNASTY, 19TH CENTURY

China, late Qing dynasty, 19th century
Dimensions: 5" (12.7cm) L, 1" (2.5cm) W

Yellow jade belt buckle with carvings of dragon head and qilong.

晚清 黄玉雕龙纹带钩

Estimate:\$200-\$300



WHITE JADE CARVED RECTANGULAR PLAQUE

China
Dimensions: 1 3/4" (4.4cm) L ; 1 1/8" (2.9cm) W

White jade carved rectangular plaque decorated with cloud motifs.

白玉雕祥云方牌

Estimate:\$300-\$500

051

**CELADON AND RUSSET JADE
CARVED GROUP LION WITH A
BALL TOGETHER WITH A JADE
CARVED PEACH PENDANT**

China

Dimensions: 1 3/8" (4.1cm) H ; 1 1/4" (3.8cm) H (2)

Comprising a celadon and russet jade carved group of lion with a ball, together with a jade carved peach pendant. (2pcs)

青白玉玉雕绣球狮子和玉雕桃子

Estimate:\$300-\$500

052



053

**WHITE AND RUSSET JADE GROUP OF PIXIU AND TUBULAR
PENDANT**

China

Dimensions: 1" (2.5cm) H ; 3" (7.6cm) L (2).

Comprising a white and russet jade carved pixiu and a white and russet tubular pendant. (2pcs)

白玉雕瑞兽和玉顶管

Estimate:\$300-\$500



JADE CARVED CHILONG BI DISC PLAQUE

China

Dimensions: 1 3/4" (4.4cm) L ; 1 3/8" Dia

Jade carved bi disc decorated with bat motifs, attached with two carved chilong on the reverse.

螭龙玉璧

Estimate:\$200-\$500

054

CELADON JADE CARVED RING PLAQUE

China

Dimensions: 1 1/8" (2.9cm) L

Celadon jade carved bi disc with cloud carving extending from the top of the disc.

青白玉雕玉璧

Estimate:\$300-\$500

055



JADE CARVED OPENWORK DRAGON PLAQUE

China

Dimensions: 2 1/2" (6.4cm) L

Jade carved plaque with openwork dragon decoration around the central ring.

螭龙雕玉牌

Estimate:\$300-\$500

056

CELADON JADE CARVED PLAQUE

China

Dimensions: 2 1/8" (5.4cm) L 1 1/8"
(2.9cm) W

Celadon jade carved plaque decorated with carving of Shoulao and his entourage, with a calligraphic inscription on the reverse, and carved with lingzhi and clouds on the top.

青白玉雕寿老童子像玉牌

Estimate: \$300-\$500

057



JADE ARCHAISTIC RHINOCEROS INCENSE BURNER

China

Dimensions: 5 1/8" (13cm) H

Jade carved archaistic style incense burner in the shape of a rhinoceros.

玉雕仿古风格犀牛形香炉

Estimate: \$300-\$500

058



WHITE JADE CARVED FLORAL PLAQUE

China

Dimensions: 3" (7.6cm) Dia

White jade carved floral plaque with enclosed cloud patterns.

雕花白玉牌

Estimate: \$300-\$500

059

PAIR OF JADE CARVED DRAGON HEAD BELT BUCKLES

China

Dimensions: 3 1/2" (8.9cm) L; 4" (10.2cm) L (2)

Pair of belt buckles carved in different colors of jade, decorated with dragon heads. (2pcs)

玉雕雕龙带钩一对

Estimate: \$500-\$700

060



JADE CARVED ARCHAISTIC TURTLE DRAGON PLAQUE

China

Dimensions: 4 1/2" (11.4cm) L, 2 1/8" (5.4cm) W

Jade carved archaistic-styled plaque of a turtle dragon.

Provenance: Sotheby's London, 18 MAY18, Lot 235

玉雕龟龙牌

Estimate: \$500-\$700

061



**JADE CARVED ARCHAISTIC
PIG-DRAGON ZHULONG PENDANT**



China
Dimensions: 3" (7.6cm) Outer Dia, 1 3/4" (4.4cm) Inner Dia

Of a "c-shaped" form with a coiled body and superbly rendered head, subtly detailed with bulging eyes, a wrinkled snout and flared nostrils, the jade carved pig-dragon pendant depicted in an archaic style.

玉雕猪龙把件

Estimate:\$500-\$700

062

**CARVED CELADON JADE
INSET AND HARDSTONE
EMBELLISHED HARDWOOD
TABLE SCREEN**

China
Dimensions: 4" (10.2cm) L; 4 1/2" (11.4cm) L

Pair of celadon jade carved dragon belt buckles. (2pcs)

青白玉雕龙带钩一对

Estimate:\$600-\$800



063

**CELADON JADE CARVED WINE
EWER WITH COVER, REPUBLICAN
PERIOD, EARLY 20TH CENTURY**

China, Republican period, early 20th century
Dimensions: 3 3/4" (9.5cm) H

Celadon jade wine ewer carved with a chilong near the spout, with scrolling cloud pattern on the handle, and a peach on the lid.

民国 青白玉雕酒壶

Estimate:\$700-\$900

064





PAIR OF DOCUMENTARY ANCESTOR PORTRAITS FOR A COUPLE LIVING IN KANGXI PERIOD, 19TH CENTURY

China, Qing dynasty, 19th century
 Watercolor on Paper
 Dimensions: 11 3/4" (29.8cm) L, 7 3/4" (19.7cm) W (2pcs)

Pair of ancestral portrait paintings depicting a well-dressed couple living in Kangxi period, with calligraphic inscriptions written next to the painting. (2pcs)

065

19世纪 康熙年间夫妻人物肖像画一对

Estimate:\$400-\$600

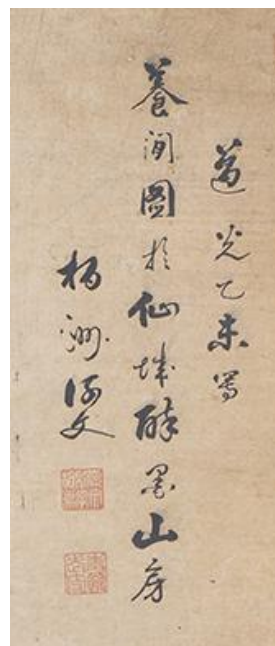
ZHONGKUI RELAXING - YANG HEWEN

China
 Watercolor and Ink on paper, Hanging scroll
 Dimensions: 68 1/4" (173.4cm) L, 37 1/8" (94.3cm) W

Depicting loosely dressed Zhong Kui scratching his back with a stick, accompanied by his servant. Signed and sealed.

杨河雯 钟馗像

Estimate:\$400-\$600



066



ZHONGKUI RELAXING - YANG HEWEN

China, Qing dynasty, 19th century

Ink and watercolor on paper

Hanging scroll

Dimensions: 46 1/2" (118cm) L, 25 1/2" (64.8cm) W

Ancestral portrait of a well dressed seated lady, with inscription indicating her name and identity.

清 蒋夫人李氏祖先像

Estimate:\$300-\$500

067

DUCKS AND FLOWERS, SIGNED TONG YIN MENG REN

China

Watercolor on Silk

Hanging Scroll

Dimensions: 50" (127cm) L, 20" (50.8cm) W

Depicting a pair of mandarin ducks resting across the peony flowers at the river.

鸭戏图

Estimate: \$300-\$500



068



EAGLE HUNTING IN PINES, 19TH CENTURY

China or Japan, 19th Century

Dimensions: 46" (116.8cm) L, 25 5/8" (65cm) W

Depicting an eagle hunting two small birds on a pine tree branch. Artist's seal to the lower left corner.

19世纪 鹰猎图

Estimate: \$300-\$500

069

PAIR OF CHINESE ANCESTRAL PORTRAITS, QING DYNASTY

China, Qing dynasty

Mounted and framed

Dimensions: 21" (53.3cm) W, 30 1/4" (76.8cm) L (2)

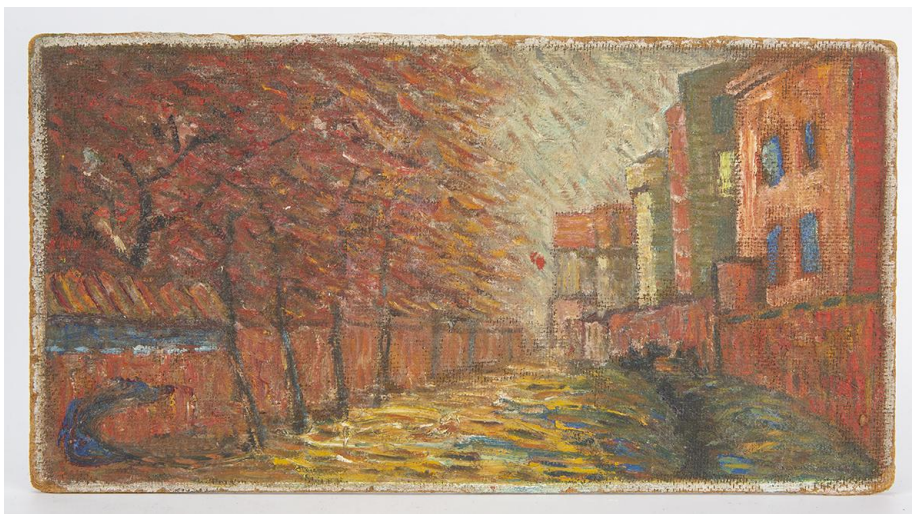
A: Depicting a bearded man in red-ground robes with gold decorative patterns and central rank badge decorated with crane; B: Depicting a crowned women wearing elaborate dress with central rank badge decorated with crane. (2pcs)

清 祖先肖像画一对

Estimate: \$200-\$400

070





China, 20th century
Oil on Board
Dimensions: 16" (40.6cm) W, 8 1/2"
(21.6cm) L

Oil painting with impressionist brushstrokes depicting the cityscape. Signed to the back in Chinese and in Roman ROGEL (possibly a transliteration of Luo Gongliu, and a name he used while studying in Russia).

AUTUMN, ATTRIBUTED TO LUO GONGLIU (1916-2004)

071

Provenance: Collection of the Xi'an Academy of Fine Arts, deaccessioned in late 1980's

罗工柳 秋景

Estimate: \$800-\$1000

CALLIGRAPHY HANGING SCROLL - INUKAI TSUYOSHI (1855-1932)

Japan
Dimensions: 57" (144.8cm) L, 19 3/4" (50cm) W

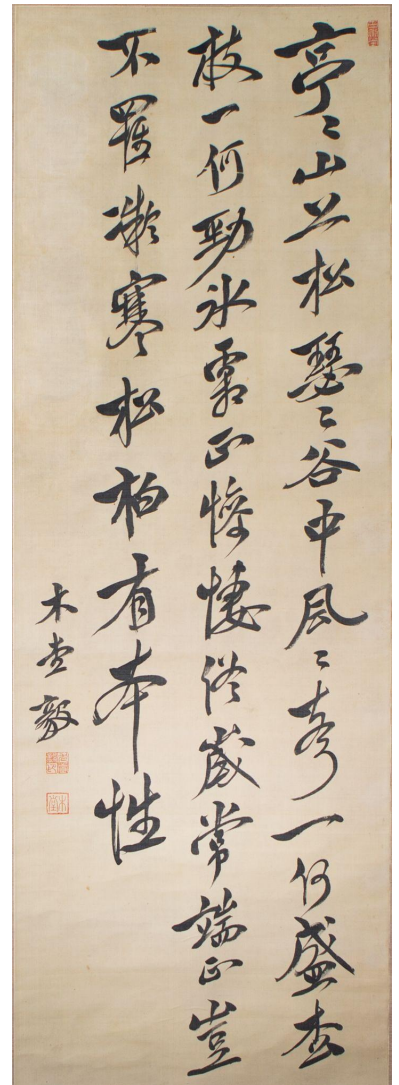
Calligraphy hanging scroll, signed with two artist's seals.

Note: Inukai Tsuyoshi (Japanese: 犬養毅, 4 June 1855 – 15 May 1932) was a Japanese politician, cabinet minister, and Prime Minister of Japan from 1931 to his assassination in 1932. Inukai was Japan's second oldest prime minister while serving, as he was aged 76 on the day he was murdered, after Kantarō Suzuki (at aged 77).

犬養毅 书法立轴

Estimate: \$1000-\$1500

072



ORCHID AND BAMBOO - WU QINGXIA (1910-2008)

China, 1979

Hanging scroll

Dimensions: 38" (96.5cm) L, 17 3/4" (45cm) W

Hanging scroll depicting bamboo, orchid, and rockery.
Signed, with two artist's seals.

Note: 吴青霞(1910--2008), 女, 为江南收藏家、鉴赏家吴仲熙先生之女公子。1934年与李秋君、周练霞、陆小曼等组成中国女子书画会。1956年受聘为上海中国画院画师。作品《万紫千红》入选日本《世界名画集》。意大利欧洲学院院士, 上海中国画院画师。中国美术家协会会员, 美协上海分会理事, 中国国际文化交流中心理事, 上海市文联委员, 意大利欧洲学院院士, 杭州西泠印社社员, 上海市文史馆馆员。主要作品《万紫千红》《腾飞河海入云霄》《腾飞万里》等。出版有《吴青霞画集》。

吴青霞 兰竹

Estimate: \$1000-\$1500

073



074



CALLIGRAPHY - ITŌ HIROBUMI (1841-1909)

Japan, Meiji period

Hand scroll, mounted and framed

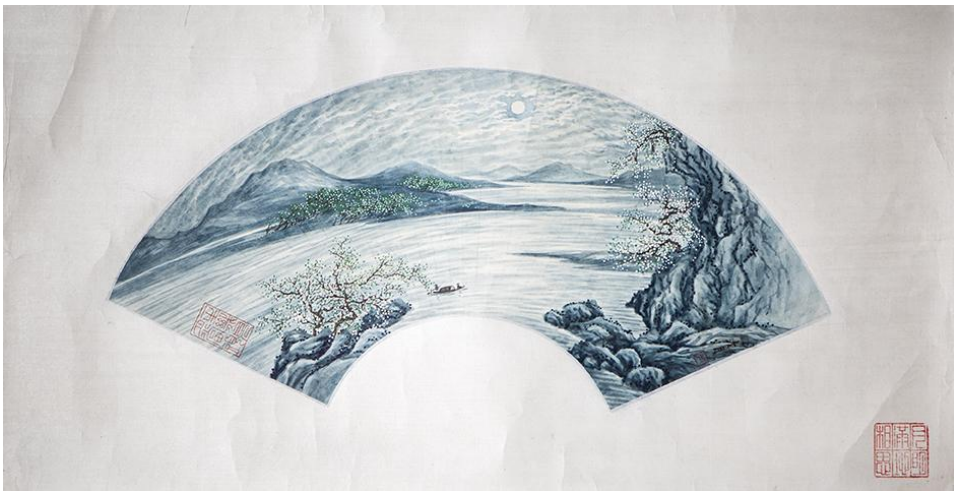
Dimensions: 54 1/2" (138.4cm) L, 19 3/8" (49.2cm) W (With frame)

Note: Itō Hirobumi (伊藤 博文, 16 October 1841 – 26 October 1909), born as Hayashi Risuke and also known as Hirofumi, Hakubun and briefly during his youth as Itō Shunsuke) was a Japanese politician and statesman who served as the first Prime Minister of Japan. He was also a leading member of the genrō, a group of senior statesmen that dictated Japanese policy during the Meiji era.

Provenance: Taiwanese Family Collection, Toronto

伊藤博文 书法横幅

Estimate: \$2000-\$3000



075

CALLIGRAPHY - ITŌ HIROBUMI (1841-1909)

China, Republican period
 Ink and watercolor on paper
 Fan, mounted
 Dimensions: 29" (73.7cm) L, 14 5/8" (37.1cm) W

Depicting a tranquil landscape scene under the moon with a boat floating on the river. Artist's seal to the lower right corner.

Note: 陶冷月(1895—1985), 江苏苏州人, 中国画家。原名善镛, 字咏韶, 号镛、宏斋、五柳后人、柯梦道人。二、三十年代历任长沙雅礼大学艺术系教授, 国立暨南大学艺术系教授兼系主任, 河南大学艺术系教授, 国立四川大学教授, 又与谢公展、吕凤子等创办南京美术专科学校。

Provenance: Taiwanese Family Collection, Toronto

陶冷月 月夜

Estimate: \$3000-\$5000

FISHERMAN - LIANG BAOMIN

China
 Ink and watercolor on paper
 Hanging scroll
 Dimensions: 26 1/2" (56.4cm) W, 39 1/2" (100cm) L

Depicting a fisherman in motion wearing a cloak and hat with a smiling expression, carrying a fishing rod over his left shoulder and a fish dangling below.

Provenance: Taiwanese Family Collection, Toronto

梁保民 渔夫图

Estimate: \$3000-\$4000



076

077

FLOWER AND BIRD - GAO QIFENG (1889-1933)

China

Ink on paper

Hanging scroll, mounted

Dimensions: 66" (167.6cm) L, 17 3/4" (45cm) W

Depicting a group of birds resting on tree branches. Signed, with artist's seal.

Note: 高奇峰(1889年—1933年)，名翥，字奇峰，以字行，廣東番禺(今番禺市被納入廣州市)員崗村人，嶺南畫派畫家，與胞兄高劍父、陳樹人並稱“二高一陳”，又稱「嶺南三傑」。

Provenance: Taiwanese Family Collection, Toronto

高奇峰 花鳥

Estimate: \$10000-\$20000





程十发
少女与鹿
东海之滨

**GIRL AND DEERS - CHENG SHIFA
(1921-2007)**

China
Ink and watercolor on paper
Mounted and framed
Dimensions: 25 5/8" (65cm) L, 13 1/8"
(33.5cm) W

Depicting a little girl with her hands on her knees and her face turned to the right, surrounded by a herd of deer. Signed and sealed.

Provenance: Rongbaozhai, Hong Kong
来源: 1980年代购于香港荣宝斋

Note: 程十发, 中国海派书画画匠, 在人物、花鸟方面独树一帜。在连环画、年画、插画、插图等方面均有造诣。工书法, 得力于秦汉木简及怀素狂草, 善将草、篆、隶结为一体。



078

程十发 少女与鹿

Estimate: \$20000-\$30000

**BRONZE "MYTHICAL BEAST"
MIRROR, SONG DYNASTY OR LATER**

China, Song dynasty or later
Dimensions: 3 7/8" (9.8cm) Dia

Bronze mirror decorated with mythical bea
patterns.

宋或更晚 瑞兽纹铜镜

Estimate: \$200-\$300



079

GU-FORM BRONZE VASE

China
Dimensions: 3 5/8" (9.2cm) H

Supported on a splayed foot and
decorated to the rounded sides with
archaistic taotie motif; the tapering neck
attached by four archaistic handles.

仿古纹铜觚

Estimate: \$300-\$500



080

**SILVERED COPPER DESK
SCREEN WITH DEMONS AND
GODS, 19TH CENTURY**

China, 19th century
Dimensions: 7" (17.8cm) L, 13 5/8" (34.6cm)
W

Four-leaf silvered copper desk screen
decorated with gods and demons.

19世纪 神鬼图铜桌屏

Estimate: \$300-\$500

081



BRONZE TEMPLE CENSER WITH TAOTIE MASKS, 19TH CENTURY

China, Qing dynasty, 19th century
Dimensions: 4 1/4" (10.8cm) H

Decorated with two taotie-shaped
handles to the sides.

19世纪 饕餮纹铜香炉

Estimate: \$300-\$500

082



JAPANESE BRONZE TEMPLE BELL, 1539

Japan, Dated to Tembun 7th year (1539)
Dimensions: 12 1/4" (31.1cm) H

The upper part of the bronze bell decorated
with well distributed spikes, the lower part
decorated with sunflowers and auspicious
clouds, with carved inscription indicating the
year when it was casted.

16世纪 日本铜钟

Estimate: \$300-\$500

083

SET OF 8 PATINATED BRASS DAOIST IMMORTALS

China
Dimensions: The Largest: 8" (20.3cm) L; The
smallest: 7 3/8" (18.7cm) L

Comprising 8 brass Daoist immortals in various
postures. (8pcs)

铜制道教人物像一组8件

Estimate: \$300-\$500

084



**SILVER INLAID ARCHAISTIC
BRONZE CENSER, SHISOU MARK,
LATE QING TO REPUBLICAN
PERIOD, 20TH CENTURY**

China, late Qing dynasty to Republican period, 20th century

Dimensions: 2 1/8" (5.4cm) H

Archaistic styled bronze censer decorated with taotie and geometric motifs in silver with two handles, two-character Shi Sou seal mark to the base.

晚清民国 石叟款仿古描银铜炉

Estimate: \$400-\$600



085

**SILVER INLAID ARCHAISTIC BRONZE
TRIPOD CENSER, SHISOU MARK, LATE
QING DYNASTY, 19TH CENTURY**

China, late Qing dynasty, 19th century

Dimensions: 5 1/8" (13cm) H

Archaistic styled bronze tripod censer decorated with cloud and geometric motifs in silver with two rectangular handles, two-character Shi Sou seal mark to the base.

晚清 石叟款仿古描银铜炉

Estimate: \$500-\$700



086

PAIR OF LION BRONZE CENSERS

China

Dimensions: 11" (27.9CM) H (with cover)

Pair of bronze censers decorated with lions playing with balls, the bodies of which are decorated with archaistic motifs of birds and beasts. (2pcs)

狮子铜香炉一对

Estimate: \$800-\$1000

087



BRONZE BUDDHA BODHISATTVA, 6TH CENTURY

China, Eastern Wei dynasty, 6th century

Dimensions: 3 1/4" (8.3cm) H

Miniature statuette of Buddha Bodhisattva.

6世纪 菩萨铜像

Estimate: \$800-\$1200

088



CELADON JADE INSET CLOISONNE ENAMELED QUATREFOIL-COVERED BOX, QING DYNASTY

China, Qing dynasty

Dimensions: 11 7/8"(30.18cm) L, 11 7/8"(30.18cm) W, 2 3/8"(6.05cm) H

The exterior of the lid decorated with enameled floral patterns on a copper-red ground, with inlaid jade carvings; the interior and the bottom of the box covered in a turquoise glaze with decorations of butterfly and flowers.

清 铜胎掐丝珐琅嵌玉四方花口盖盒

Estimate: \$800-\$1500

089

MING STYLE BRONZE BEAKER CENSER WITH QILIN AND LINGZHI HANDLES AND COVER, XUANDE MARK, QING DYNASTY, 18TH CENTURY

China, Qing dynasty, 18th century

Dimensions: 5 1/4" (13.3cm) H (With Cover)

Decorated with qilin patterns on the sides, a white jade carved monkey button attached to the center of the openwork cover.

Six-character Xuande seal mark to the base.

18世纪 麒麟玉钮香炉 宣德款

Estimate: \$1000-\$1500



090



SET OF 3 BONE CARVED FIGURAL PINS, 20TH CENTURY

Hong Kong, 20th century
Dimensions: 2" (5cm) H (3)

Comprising 3 bone carved pins of Japanese figures. (3pcs)

20世纪 牙雕人物别针

Estimate: \$50-\$100

091

POLYCHROME BONE CARVED GODDESS STATUE WITH STAND

China
Dimensions: 9 3/8" (24cm) H

The statue of the goddess, carved in bone and painted in polychromatic pigments, holding a bouquet of flowers in her left hand and gently touching the buds with her right hand, her face facing slightly to the upper right.

牙雕加彩持花天女像

Estimate: \$200-\$400

092



BONE CARVED GODDESS STATUE WITH STAND

China
Dimensions: 7 1/8" (18.1cm) H
with stand

Statue of a goddess carved in bone, holding a round fan in her left hand and a bouquet of flowers in her right hand, with her face facing slightly to the lower right.

牙雕持扇天女像

Estimate: \$300-\$500

093



**POLYCHROME BONE CARVED
FIGURAL GROUP, CHENGHUA MARK**

China

Dimensions: 6 7/8" (17.5cm) H

Polychrome bone carving of two standing musicians and a musician kneeling on one knee, with a Chenghua four-character mark engraved on the base.

牙雕加彩人物组像 大明成化款

Estimate: \$300-\$500

094



BONE CARVED LAMP

Dimensions: 13 3/8" (34cm) H

Bone carving of a slightly inclined cylindrical lamp with carved plant and animal motifs.

牙雕台灯

Estimate: \$300-\$500

095

SET OF 3 BONE CARVED IMPERIAL FIGURES

China

Dimensions: 5" (12.5cm) H

Comprising two bone carved seated statues of crowned emperors and one bone carved seated statue of empress. (3pcs)

牙雕宫廷人物像3件

Estimate: \$500-\$700

096



BONE CARVED STATUE OF MILITARY OFFICIAL WITH STAND

Dimensions: 11" (28cm) H

Bone carved statue of a bearded military official with sword.

牙雕配剑武士像

Estimate: \$600-\$800

097



EXPORT BONE CARVED DRAGON STATUE WITH WOOD STAND

China, Republican period

Dimensions: 21 5/8" (55cm) L

Bone carvings of dragons and cloud patterns over the original shape of the tusk.

民国 牙雕(原牙)雕龙摆件带座

Estimate: \$700-\$900

098



WOOD CARVED GILT LACQUER OPENWORK PHOENIX HANGING SCREEN, LATE QING DYNASTY

China, late Qing dynasty

Dimensions: 21 1/2" (54.6cm) W; 33 5/8" (85.4cm) H (With Frame)

Wood carved lacquer hanging screen with gilt decoration of phoenix and flowers.

清末 木雕漆金凤凰牡丹图挂屏

Estimate: \$300-\$500

099





BLACK LACQUERED GUQIN, REPUBLICAN PERIOD

China, Republican period
Dimensions: 7" (17.8cm) L, 48 3/8"
(122.9cm) W, 4" (10.2cm) H

Guqin covered by black lacquer (missing strings).

民国 古琴(无弦)

Estimate: \$300-\$500

100

3-PART WOOD CARVED COIN MOTIF DESK BOX WITH STAND, LATE QING DYNASTY, 19TH-EARLY 20TH CENTURY

China, 19th-early 20th century
Dimensions: 4 1/2" (11.4cm) L, 5 7/8"
(14.9cm) W, 3" (7.6cm) H

Carved wooden box with coin pattern
decoration on the lid, carved in the shape
of a desk.

19-20世纪早期 木雕铜钱纹案几小盒

Estimate: \$300-\$500

101



SHOUSHAN SOAPSTONE FIGURE OF GUANYIN WITH HARDWOOD STAND, 19TH CENTURY

China, 19th century
Dimensions: 4 1/4" (10.8cm) H (with
base)

Shoushan soapstone carved statue of
seated Guanyin, attached to a carved
wood stand.

19世纪 寿山石雕观音像

Estimate: \$300-\$500

102

PIERCED BRASS TEMPLE FORM CRICKET CAGE, 19TH CENTURY

China, 19th century

Dimensions: 7 1/4" (18.5cm) H

Moulded into the shape of a temple, with openwork foliage decoration to the four sides, the roof decorated with butterfly and flowers.

19世纪 寺庙型黄铜蚰蚰笼

Estimate: \$300-\$500

103



HUANGHUALI BRUSH POT-BITONG, 19TH CENTURY

China, Qing dynasty, 19th century

Dimensions: 4 1/8" (10.5cm) H, 1

7/8" (4.8cm) Dia

Of slightly flared, rounded form, raised on a short ring foot.

19世纪 黄花梨笔筒

Estimate: \$300-\$500

104



SET OF 5 FAMILLE ROSE SCHOLAR'S VASES AND JARLETS, 1972

China, 1972

Dimensions: 1: 5" (12.7cm) H; 2: 3 7/8" (9.8cm) H; 3: 1 3/4" (4.4cm) H; 4: 1 1/4" (3.2cm) H; 5 and 6: 3 1/2" (8.9cm)

Set of 5 scholar's objects decorated with flowers and calligraphic inscriptions, comprising 1 vase, 1 brushpots, 2 jarlets, and 1 covered box. Five-character Jingdezhen seal and Roman characters CHINA in blue glaze to the base. (5pcs)

“中国景德镇”款粉彩文房用具一组五件

Estimate: \$1000-\$1500



105

CARVED CELADON JADE INSET AND HARDSTONE EMBELLISHED HARDWOOD TABLE SCREEN

China

Dimensions: 6 3/4" (17.1cm) W 10" (25.4cm) H



Carved hardwood table screen decorated with inset celadon jade carved vase-shaped decorative plaque, a white jade carved cicada, a white jade carved bi pendant, and a qinlin. The reverse decorated with a plaque with an openwork dragon design carved in white and russet jade.

Provenance: Private Collection, USA

硬木嵌百寶圖雕龙桌屏

Estimate: \$1500-\$2000

106



HUALI WOOD CARVED MOTHER-OF-PEARL INLAID FOUR-LEAF SCREEN

China

Dimensions: 68" (127.7cm) W; 72" (182.9cm) H

Carved four-leaf screen in huali wood with inlaid decoration of mother-of-pearl flowers and birds and inscriptions.

四叶花梨木嵌螺钿屏风

Estimate: \$1000-\$1500

107

JADE CARVED FIGURAL SQUARE BRUSHPOT - BITONG, QIANLONG MARK

China

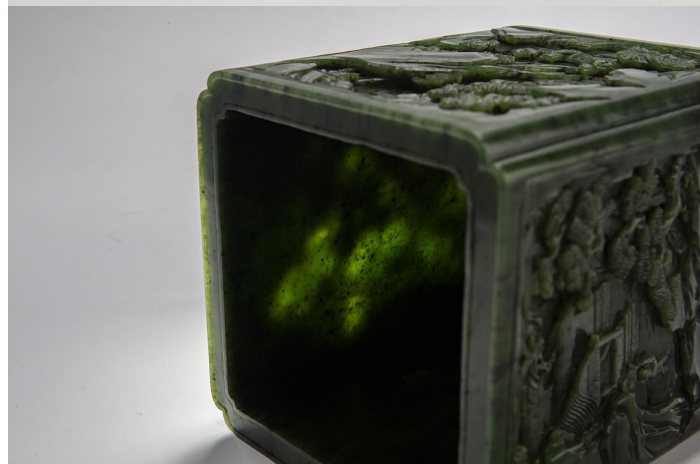
Dimensions: 7 1/2" (19cm) H, 5 5/8" (14.2cm) L, 5 5/8" (14.2cm) W

Decorated with carvings of Taoist figures in mountains to the four sides.
Four-character gilt Qianlong seal mark.

Provenance: Private Collection from USA

山水人物故事四方矮角碧玉笔筒乾隆年制款

Estimate: \$8000-\$12000



108

**FAMILLE ROSE OCTAGONAL LANDSCAPE
BASIN, SHENDETANGZHI MARK, QING DYNASTY**



China, Qing dynasty, Daoguang period
Dimensions: 10 5/8" (27cm) Dia, 3 1/4" (8.3cm) H

Of octagonal shape with everted rim, the exterior decorated with a continuous landscape scene, the interior covered in turquoise glaze, four-character shendetangzhi seal mark in underglaze red.

Provenance: Hong Kong Family Collection, Toronto

清道光 粉彩山水人物八方水仙花盆慎德堂制款

Estimate: \$30000-\$50000



DRAGON LACQUER SEAL BOX, REPUBLICAN PERIOD, 20TH C

China, Republican period, 20th century
Dimensions: 10 1/2" (26.7cm), 10 1/2" (26.7cm),
10" (25.4cm) H

Black lacquer box decorated with golden dragon and phoenix enclosed by clouds, interior covered with red lacquer.

民国 龙凤漆盒

Estimate: \$200-\$300

110



RED GLAZED BALUSTER VASE, REPUBLICAN PERIOD

China, Republican period
Dimensions: 17 7/8" (45.4cm) H

Overall covered in red glaze, rim and base left unglazed.

民国 红釉赏瓶

Estimate: \$200-\$300

111



**FAMILLE ROSE
TURQUOISE-GLAZED
POMEGRANATE VASE,
YUHUCHUNPING, QIANLONG MARK**

China

Dimensions: 11 3/4" (30cm) H

The exterior decorated with pomegranates on branches on a turquoise ground, the reverse decorated with calligraphic inscriptions, the base covered in a lighter celadon glaze with six-character Qianlong mark.

孔雀蓝釉石榴图玉壶春瓶 乾隆款

Estimate: \$200-\$400

112



**FAMILLE ROSE FIGURAL VASE,
JURENTANGZHI MARK,
REPUBLICAN PERIOD**

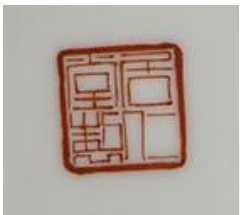
China, Republican period

Dimensions: 8 3/4" (22.2cm) H

Famille rose vase decorated with two immortals gazing at a deer before a pine tree. Jurentang mark in underglaze red to the base.

民国 粉彩仙人指鹿图瓶 居仁堂制款

Estimate: \$200-\$400



113

BLUE WHITE ORCHID AND SHOU-CHARACTER CUP, LATE MING TO TRANSITIONAL PERIOD, 17TH CENTURY

China, late Ming dynasty to transitional period, 17th century
Dimensions: 1 7/8" (4.8cm) H, 3" (7.6cm) Dia

Blue-and-white cup decorated with orchid and shou-characters.

17世纪 青花兰花寿字纹小杯

Estimate: \$300-\$500



114

FAMILLE ROSE FLORAL WINE CUP, LATE QING TO REPUBLICAN PERIOD, EARLY 20TH CENTURY



China, late Qing to Republican period, early 20th century
Dimensions: 1 3/4" (4.4cm) H, 2 5/8" (6.7cm) Dia

Famille rose wine cup with everted rim decorated with floral patterns.

晚晴至20世纪早期 粉彩花卉纹杯

Estimate: \$300-\$500

115

PAIR OF DEHUA BLANC-DE-CHINE OCTAGONAL CUPS

China
Dimensions: 10 5/8" (27cm) L, 7 1/2" (19.1cm) W

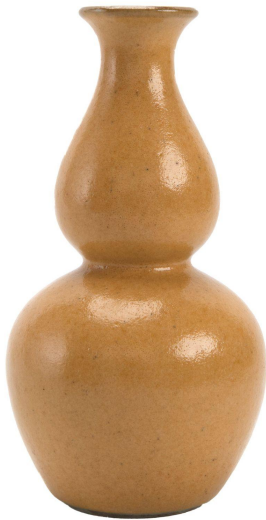
Pair of Dehua Blanc-de-Chine octagonal cups with everted rim, decorated with plum blossom motifs. (2pcs)

德化白釉梅花杯一对

Estimate: \$300-\$500



116



TEADUST GLAZED GOURD VASE, QING DYNASTY

China, Qing dynasty
Dimensions: 8 1/8" (20.6cm) H

Potted with a globular lower bulb and a slender upper bulb, the body made into a gourd shape covered in teadust glaze.

清 黄釉葫芦瓶

Estimate: \$300-\$500

117

FAMILLE ROSE FIGURAL STATUE OF BOYS

China
Dimensions: 8" (20.3cm) H

Famille rose statue of a boy dressed in colorful clothes riding on the neck of another boy dressed in colorful clothes with floral patterns.

瓷塑粉彩婴戏像

Estimate: \$300-\$500



118

PAIR OF FAMILLE ROSE SWALLOW ROUDEAU VASES

China

Dimensions: 8" (20.3cm) H (2pcs)

Pair of famille rose roudeau vases decorated with swallows flying over willow branches and flowers, decorated on the back with calligraphic inscriptions and the artist's seal. (2pcs)

春燕双飞粉彩花瓶一对

Estimate: \$300-\$500

119



CELADON-GLAZED CONG-SHAPED VASE

Dimensions: 10 1/4" (26cm) H

Cong-shaped vase covered in a pale celadon glaze, decorated with figures on all four sides and floral designs on the neck, with a CHINA mark on the base next to a hole.

青釉琮式瓶

Estimate: \$300-\$500

120



FLUTED LONGQUAN CELADON TRIPOD INCENSE BURNER

China

Dimensions: 3 3/4" (9.5cm) H

Overall covered in a celadon glaze, with barbed rim and fluted body.

龙泉窑三足炉

Estimate: \$300-\$500

121



YELLOW GROUND GILT DRAGON DISH, QING DYNASTY, GUANGXU MARK AND PERIOD

China, Qing dynasty, Guangxu period (1875-1907)

Dimensions: 4 7/8" (12.4cm) Dia

Decorated with a pair of dragons in different colors and floral patterns on a yellow ground, enclosed by a tile of foliage on a turquoise ground. The reverse decorated with floral patterns. Six-character Guangxu seal mark in underglaze red.

清光绪 黄地双龙小碟

Estimate: \$300-\$500



122

FAMILLE ROSE SEVEN SAGES OF THE BAMBOO GROVE BALUSTER VASE

China

Dimensions: 22 3/8" (57cm) H

Decorated with figural painting of the seven sages of the Bamboo Grove, with calligraphic inscriptions on the reverse. Zhou Xiaosong's seal mark in underglaze red.

竹林七贤人物故事双耳瓶 周筱松款

Estimate: \$300-\$500



123

TWO FAMILLE ROSE FLORAL DISHES, QING DYNASTY

China, Qing dynasty

Dimensions: 1: 10" (25.4cm) Dia; 2: 9 1/4" (23.5cm) Dia

Comprising a famille rose celadon-ground dish decorated with flowers and rockery; together with a famille rose dish decorated with orchids and floral roundel, with Guangxu mark to the base. (2pcs)

清 粉彩花卉盘2只

Estimate: \$400-\$600



124

CELADON-GROUND BAMBOO BOWL, QING DYNASTY

China, Qing dynasty

Dimensions: 6 3/4" (17.1cm) Dia

Celadon-ground glazed bowl decorated with random circular patterns and three roundels depicting bamboo motifs in red.

清 松石绿地开光矾红竹纹碗

Estimate: \$400-\$600



125

ROBIN'S-EGG-GLAZED HEXAGONAL BOTTLE VASE, LATE QING DYNASTY

China, late Qing dynasty

Dimensions: 8 5/8" (21.9cm) H

Hexagonal bottle vase with everted rim and bulging body, covered by an opaque turquoise glaze densely mottled in bright, dark blue.

清末 炉钧釉六方撇口瓶

Estimate: \$400-\$600



126

**BLUE WHITE PAVILLION AND
LANDSCAPE DISH, MID QING
DYNASTY**

China, mid Qing dynasty
Dimensions: 10 1/2" (26.7cm) L, 7 1/2"
(19.1cm) W

Blue-and-white dish decorated with
pavilions, pine trees, rivers, and
mountains, with a tile of floral motifs to
the rim.

清中期 琴台楼阁八方盘

Estimate: \$400-\$600



127



**YELLOW GLAZED SANCAI 'THREE
FRIENDS OF WINTER' BOTTLE VASE,
LATE QING DYNASTY TO REPUBLICAN**

China, late Qing dynasty or Republican
Dimensions: 6" (15.2cm) H

Of a bulbous body with a sloping shoulder rising to a
cylindrical neck, covered in sancai glaze with
decoration of 'three friends of winter' to the exterior.

晚清或民国 黄釉素三彩松竹梅长颈瓶

Estimate: \$400-\$600

128

**DEHUA BLANC-DE-CHINE
GUANYIN, HE CHAOZONG SEAL
MARK, REPUBLICAN PERIOD**

China, Republican Period
Dimensions: 10" (25.4cm) H

Dehua white glazed statue of Guanyin
standing on a beaded base, with He
Chaozong's sealmark.

民国 德化观音像 何朝宗印款

Estimate: \$400-\$600



129

**FAMILLE ROSE LANDSCAPE
VASE, QIANLONG MARK**

China

Dimensions: 10 1/4" (26cm) H

Of inverted baluster vase form with splayed foot and elongate ovoid body rising to a tapered mouth and rounded rim, the body decorated with landscape painting and calligraphic inscription. Six-character Qianlong seal mark.

大清乾隆年制款 珐琅彩山水人物玉米瓶

Estimate: \$500-\$700



130

**BLUE WHITE FAMILLE VERTE
FLORAL BOWL, QING DYNASTY,
KANGXI PERIOD**

China, Qing dynasty, Kangxi period

Dimensions: 3 5/8" (9.2cm) H, 5 1/8" (13cm) Dia

Blue-and-white famille verte cup with slightly everted rim, decorated with flowers and rockery with a tile of lotus petals around the bottom.

清康熙 青花五彩花卉纹杯

Estimate: \$500-\$700



131

**RARE ENAMELED FAUX-SILVER
ROUND BOX AND COVER,
REPUBLICAN PERIOD, EARLY
20TH CENTURY**

China, Qing dynasty, Kangxi period

Dimensions: 3 5/8" (9.2cm) H, 5 1/8" (13cm) Dia

Blue-and-white famille verte cup with slightly everted rim, decorated with flowers and rockery with a tile of lotus petals around the bottom.

清康熙 青花五彩花卉纹杯

Estimate: \$500-\$700



132

BLUE WHITE EXPORT SPIRITS BOTTLE, LATE 17TH CENTURY, KANGXI PERIOD

China, Qing dynasty, Kangxi period, late 17th century

Dimensions: 5 7/8" (14.9cm)

Slender blue and white barrel-shaped spirit bottle painted with a basket of flowers and floral motifs.

清康熙 青花花卉纹瓶

Estimate: \$500-\$700



133



China, Qing dynasty

Dimensions: 2 1/4" (5.7cm) H, 5" (12.7cm) Dia

Decorated with three roundels depicting flower blossom on a incised yellow-glazed ground. Four-character Guangxu seal mark to the base.

清 黄釉轧道开光粉彩花卉纹碗 光绪年制款

Estimate: \$500-\$700

YELLOW GLAZED INCISED FLORAL BOWL, GUANGXU MARK, QING DYNASTY

134

SET OF 7 BLUE WHITE FLORAL DISHES

China, 20th century

Dimensions: 1: 8 1/2" (21.6cm) Dia; 2~7: 6 1/8" (15.6cm) Dia

Comprising 1 blue-and-white dish decorated with flowers and bird, together with 6 smaller dishes of the same patterns. (7pcs)

青花莲纹碟7件一组

Estimate: \$500-\$700



135

BLUE AND WHITE FIGURAL MEIPING VASE, 14TH-15TH CENTURY

China, 14th-15th century

Dimensions: 10" (25.4cm) H

Decorated with Daoist figures and a crane, enclosed by auspicious cloud and leavy motifs, overall covered in blue-and-white glaze, the rim left unglazed with a double swirl pattern.

明 青花人物梅瓶

Estimate: \$500-\$700

136



PAIR OF EXPORT FAMILLE VERTE PORCELAIN HAT HOLDERS

China

Dimensions: 12 1/8" (30.8cm) H (2) with wood stands

Pair of hexagonal famille verte openwork hat holders decorated with female attendants with wood stands. Roman characters CHINA in red glaze to the base. (2pcs)

出口五彩仕女图帽筒一对(带座)

Estimate: \$600-\$800

137

CELADON GLAZED BLUE WHITE FANGHU VASE WITH ELEPHANT-HANDLES

China

Dimensions: 14 1/4" (36cm) H

Celadon-glazed fanghu vase decorated with a landscape scene in blue and white and copper-red glaze, with a pair of ring handles in the shape of an elephant's head attached to either side, with incised floral motifs decorating the underside.

象耳青地青花方瓶

Estimate: \$600-\$800

138



FLAMBE TRANSMUTATIONAL GLAZED BALUSTER VASE, QING DYNASTY



China, Qing dynasty

Dimensions: 11 1/2" (29.2cm) H

Of baluster form, the body rising from a flared foot and surmounted by a trumpet neck, all under a copper red glaze with shades of apple green and black running from the interior over the rim and neck in between the segments, the base left unglazed.

Compare with A flambe-glazed vase, 19th / 20th century in Sotheby's New York sale 29MAR2022, Lot 611

<https://www.sothebys.com/en/buy/auction/2022/china-5000-years-2/a-flambe-glazed-vase-19th-20th-century-shi-jiu-er>

清 窑变三羊开泰观音瓶

Estimate: \$700-\$900

139

FAMILLE VERTE FIGURE WITH QILIN JAR

China

Dimensions: 5 7/8" (14.9cm) H

Famille verte jar decorated with a male figure riding a mysterious creature *qilin* followed by two boy attendants in front of rockery and palm trees.

五彩人物麒麟图罐

Estimate: \$700-\$900



140

PAIR OF FAMILLE ROSE BARBED RIM BOWLS

China

Dimensions: 8" (20.3cm) Dia (2)

Pair of famille rose barbed rim bowls decorated with pomegranates, bats, and shou-character. Decorative motifs to the center of the interior and the base. (2pcs)

粉彩石榴福寿纹花口碗一对

Estimate: \$700-\$900



141

YELLOW GLAZED CHILONG JUE CUP, QING DYNASTY, KANGXI PERIOD

China, Qing Dynasty, Kangxi period
Dimensions: 3" (7.6cm) Dia

Jue-shaped cup with everted rim covered in yellow glaze with a green glazed chilong attached to the exterior of the cup.

清康熙 黄釉绿龙爵杯

Estimate: \$700-\$900



142

PAIR OF FAMILLE ROSE DRAGON-HANDLE LOZENGE SECTION VASES, LATE QING 19TH CENTURY

China, Qing dynasty, 19th century
Dimensions: 10" (25.4cm) H (2)

Pair of famille rose vases decorated with floral patterns, the neck attached with a pair of chilong-shaped handles, the body decorated with two heart-shaped windows framing birds and flowers. (2pcs)

晚清 粉彩花卉纹螭龙瓶一对

Estimate: \$700-\$900



143

FAMILLE ROSE YELLOW-GROUND 'HUNDRED ANTIQUES' BOWL, ZHONGHUAZHENPIN MARK, REPUBLICAN PERIOD

144

China, Republican Period
Dimensions: 2 1/4" (5.7cm) H, 5" (12.7cm) Dia

Famille rose yellow-ground bowl decorated with three roundels depicting 'hundred antiques' to the exterior, a floral ribbon motif painted to the center of the interior, four-character zhonghuazhenpin seal mark in underglaze red to the base.

民国 粉彩黄地开光博古文碗 中华珍品款

Estimate: \$700-\$900



GREEN CRACKLE GLAZED ROULEAU VASE, QING DYNASTY

China, Qing dynasty
Dimensions: 9 1/8" (23.2cm) H

Overall covered in green crackled glaze, the interior and the base left unglazed.

清 绿釉棒槌瓶

Estimate: \$700-\$900

145

TURQUOISE CRACKLE GLAZED FANGHU VASE

China
Dimensions: 4 5/8" (11.7cm)

Molded on two sides with a slightly raised peach-shape panel, the neck flanked by two tubular handles, the overall body covered in turquoise crackle glaze.

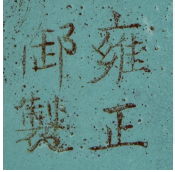
仿汝窑天蓝釉四方贯耳瓶

Estimate: \$700-\$900

146



147



FAMILLE ROSE RED GLAZED CHILONG FLORAL FIVE-TUBE VASE, YONGZHENG MARK

China

Dimensions: 11 1/4" (28.6cm) H

Moulded with five rectangular tubes decorated with chilong pattern, the exterior covered in red glaze with floral motifs, the interior and base covered in turquoise glaze. Four-character Yongzheng seal mark to the base.

Provenance: Private Collection, USA

胭脂红轧道粉彩折枝花卉雕螭龙五管花插 雍正御制款

Estimate: \$2000-\$3000

EXPORT HEXAGONAL GILT FIGURAL VASE, QING DYNASTY

China, Qing dynasty, Qianlong period

Dimensions: 14 5/8" (37.1cm) H

Of hexagonal shape, the gilt vase decorated with six windows depicting Honglougong scenes.

Provenance: Private Collection, USA

乾隆出口 粉彩开光描金庭院人物六角瓶

Estimate: \$2000-\$3000

148



PAIR OF CRACKLE FLAMBE-GLAZED VASES, QING DYNASTY

China, Qing dynasty

Dimensions: 7 5/8" (19.4cm) H

Of globular body and elongated neck, the pair of vases covered by crackle flambe glaze in red and apple green, base covered in pale white crackle glaze. (2pcs)

Provenance: Hong Kong Family Collection, Toronto

清 红釉长颈瓶一对

Estimate: \$3000-\$5000



149

**PAIR OF UNDERGLAZE-BLUE AND
COPPER-RED DRAGON VASES,
YONGZHENG MARK, REPUBLICAN
PERIOD**

China, Republican period

Dimensions: 6" (15.2cm) H (2)

Pair of underglaze-blue and copper-red vases with globular body and tall foot, decorated with dragon patterns. Four-character Yongzheng seal mark to the base. (2pcs)

民国 青花釉里红龙纹长颈瓶一对 雍正年制款

Estimate: \$2000-\$3000

150



**COPPER-RED-DECORATED BLUE
AND WHITE POMEGRANATE JAR,
18TH CENTURY**

China, 18th century

Dimensions: 8 3/4" (22.2cm) H

Of globular body and everted rim, the blue and white jar decorated with copper-red pomegranates and unglazed blue leafy designs.

Provenance: Private Collection, USA

18世纪 青花釉里红石榴纹罐

Estimate: \$3000-\$5000

151

**FAMILLE ROSE
SHOU-CHARACTER FIVE-TUBE
SQUARE VASE, QIANLONG MARK,
REPUBLICAN OR EARLIER**

China, Republican period or earlier

Dimensions: 5 3/4" (14.6cm) H

Moulded with five tubes, decorated with famille rose floral pattern and shou-character, the neck decorated with a tile of key-fret motifs.

民国或更早 粉彩寿字五孔插花方瓶 乾隆款

Estimate: \$3000-\$5000

152



**BLUE WHITE LOTUS BOWL,
DAOGUANG MARK AND PERIOD, QING
DYNASTY**

China, Qing dynasty, Daoguang mark and period
Dimensions: 6 1/2" (16.5cm) Dia, 3" (7.6cm) H



With deep, rounded sides rising to a slightly flaring rim, the bowl is decorated on the exterior with a frieze of peony scroll above a petal lappet band, and on the center of the interior with a peony spray roundel. Six-character Daoguang seal mark in underglaze blue.

Compare with a 'Blue and White Lotus Bowl',
Christie's New York, 26JUN2019, Lot 16.
<https://onlineonly.christies.com/s/art-china-summer-edition/blue-white-lotus-bowl-16/71823>

153

清道光 青花缠枝莲纹宫碗

Estimate: \$6000-\$8000

**DOUCAI ENAMEL SHOU-CHARACTER DISH,
QING DYNASTY, DAOGUANG MARK AND PERIOD**

China, Qing dynasty, Daoguang Mark and Period
Dimensions: 8 1/4" (21cm) Dia

The rounded sides raised on a tapering foot, enameled to the interior with eight multi-colored shou characters radiating from a central shou medallion, enclosed by interlinking foliate scrolls, the reverse with a band of stylized shou characters between interlaced scrolls at the foot and 'comma' motifs encircling the rim. Six-character Daoguang mark in underglaze blue.

For the possible inspiration of this dish see a Yongzheng dish of the same design sold in our Hong Kong rooms, 17th May 1988, lot 215; and a doucai dish with a Qianlong seal mark included in the Oriental Ceramic Society exhibition Ch'ing Polychrome Porcelain, Hong Kong, 1977, cat.no. 85.

Compare with A doucai enamel 'shou' dish Seal mark and period of Daoguang, Sotheby's New York, 19MAR2007, Lot 850.

大清道光年制 斗彩寿纹盘

Estimate: \$8000-\$10000



154

**HENAN BLACK POTTERY
WINE BOTTLE, 15TH-16TH
CENTURY**

China, 15th-16th century
Dimensions: 4 3/8" (11cm) H

Of ribbed tapering form with high shoulder
rising into a slightly everted cylindrical neck.

15-16世纪 河南黑陶酒罐

Estimate: \$200-\$400

155



**HENAN BLACK POTTERY
WINE BOTTLE, 15TH-16TH
CENTURY**

China, 15th-16th century
Dimensions: 6 1/2" (16.5cm) H

Of cylindrical body with a slightly everted
neck, overall covered in a black glaze,
the foot rim left unglazed.

15-16世纪 河南黑陶酒罐

Estimate: \$300-\$500

156

**SHUFU / LUANBAI GLAZE MOLDED
DISH, YUAN DYNASTY, 13TH CENTURY**

China, Yuan dynasty, 13th century
Dimensions: 1 3/4" (4.4cm) H, 4 1/2" (11.4cm) Dia,

Shufu/luanbai glazed molded dish with everted rim and unglazed foot.

元 枢府白瓷撇口碗

Estimate: \$1500-\$2000

157



ANCIENT JAPANESE BOOK STUDY OF POTTERYWARE, 1901 EDITION

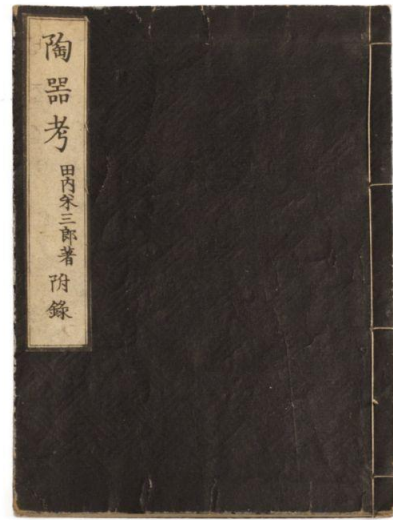
Japan, Meiji period, 1901
Dimensions: 8 3/4" (22.2cm) L, 6" (15.2cm) W,

Text in traditional Chinese. Paper covers, string four hole stab binding.

Provenance: Yangtze Art Gallery

1901 日本明治时期《陶器考》

Estimate: \$100-\$200



158



159

ANTIQUA CHINESE BOOK ZHEN DE XIU XIN JING, QING DYNASTY

China, Qing dynasty, Guangxu period
Dimensions: 13 1/2" (34.3cm) L, 9" (22.9cm) W, 1 1/2" (3.8cm) H (2)

Text in traditional Chinese. Paper covers, string four hole stab binding.

Provenance: Yangtze Art Gallery

清光绪《真德秀心经》1册全

Estimate: \$200-\$300

**ANTIQUe CHINESE MANUSCRIPT
THOUSAND CHARACTER
CLASSIC IN TRADITIONAL
CHINESE AND MANCHU SCRIPT,
QING DYNASTY**

China, Qing dynasty
Dimensions: 12 1/2" (31.8cm) L, 9"
(22.9cm) W, 1" (2.5cm) H

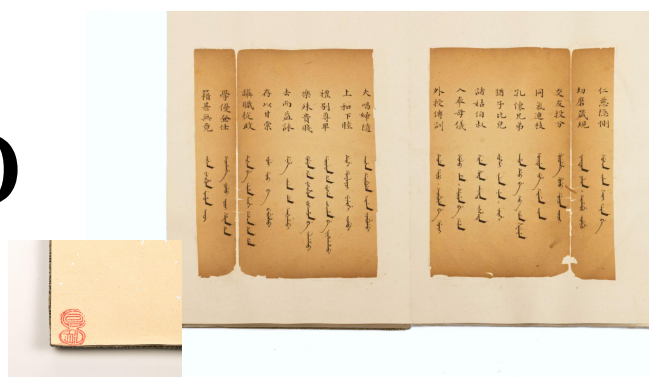
Comprising hand written script of Thousand
Character Classic in traditional Chinese and
Manchu script with silk cover.

Provenance: Yangtze Art Gallery

清《满汉千字文》

Estimate: \$200-\$300

160



**ANTIQUe CHINESE BOOK
COMPLETE EIGHT-VOLUME SET:
HU SHI SHU HUA KAO SAN
ZHONG**

China
Dimensions: 7 7/8" (20cm) L, 5 1/2" (14cm) W, 2
1/4" (5.7cm) H

Ancient Chinese calligraphic book with hardcover.
Text in traditional Chinese. Paper covers, string
four hole stab binding.

Provenance: Yangtze Art Gallery

《胡氏书画考三種》全八册

Estimate: \$200-\$300

161

ANTIQUAE CHINESE BOOK WITH HARDCOVER: TING YUE SHAN FANG QI QIAO SHU PU



China, 20th century
with hard cover

Dimensions: 10 3/4" (27.3cm) L, 6 1/4" (15.9cm) W, 7/8"
(2.2cm) H

Ancient Chinese pictorial and calligraphic book with
hardcover. Text in traditional Chinese. Paper covers, string
four hole stab binding.

Note: 黄山寿 (1855-1919) 原名曜, 字旭初, 别字旭道人, 晚
号旭迟老人, 又号丽生, 江苏武进人。官直隶同知。幼年贫困
, 一志于书画, 书工唐隶北魏及郑燮、恽寿平, 得其神韵。画
则人物、仕女、青绿山水, 双钩花鸟及墨龙、走兽、草虫、墨
梅、竹石, 无一不能。五十后, 鬻画上海, 卒年六十五。

Provenance: Yangtze Art Gallery

《听月山房七巧书谱 黄山寿题》

Estimate: \$200-\$300

162

SET OF 4 ANCIENT CHINESE BOOKS

China

Dimensions: 1: 11 7/8" (30.18cm) L, 6"
(15.2cm) W, 3/4" (1.9cm) H; 2~4: 11 5/8"
(29.5cm) L, 6 3/4" (17cm) W, 3/8" (1cm)

Comprising 4 texts. Text in traditional Chinese.
Paper covers, string four hole stab binding.

Provenance: Yangtze Art Gallery

中国古籍4本

Estimate: \$200-\$300



163

ANTIQUÉ CHINESE BOOKS FOUR-VOLUME SET: GUO CHAO HUA SHI

China

Dimensions: 1: 7 1/2" (19cm) L, 5 1/8" (13cm) W, 1" (2.5cm) H; 2: 7 1/2" (19cm) L, 5 1/8" (13cm) W, 1 1/4" (3.2cm) H

Four-volume set. Text in traditional Chinese. Paper covers, string four hole stab binding.

Note: 中国清代画史著作。冯金伯编著。冯金伯，字冶堂，号墨香。江苏南汇人。初官句容县训导，晚年主讲应城浦阳学院。他能书法，善画山水，亦工诗词。此书最早序文作于乾隆五十九年(1794)，成书当在此时。

Provenance: Department of Antique Books, Guangzhou Xinhua Bookstore

Provenance: Yangtze Art Gallery

《国朝画识》4册

Estimate: \$200-\$300



164

ANTIQUÉ CHINESE BOOKS FOUR-VOLUME SET: JIE ZI YUAN HUA ZHUAN, QING DYNASTY

China, Qing Dynasty

Dimensions: 9 3/8" (23.8cm) L, 5 3/4" (14.6cm) W, 2" (5cm) H

Four-volume set. Text in traditional Chinese. Paper covers, string four hole stab binding.

Includes text and picture instructions for painting techniques.

Provenance: Yangtze Art Gallery

《芥子园画传》共4本

Estimate: \$200-\$300



165



SET OF 6 ANTIQUE CHINESE BOOKS

China

Dimensions: The Largest: 9 7/8" (25cm) L, 7 3/4" (19.7cm) W, 5/8" (1.6cm) H; The Smallest: 8 1/8" (20.6cm) L, 4 5/8" (11.7cm) W, 1/4" (0.6cm) H;

Comprising 6 antique Chinese books. Text in traditional Chinese. Paper covers, string four hole stab binding.

Provenance: Yangtze Art Gallery

中国古籍6本

Estimate: \$200-\$300

166

ANTIQUA CHINESE BOOKS COMPLETE EIGHT-VOLUME SET: TING YUN GE CONG HUA

China, Republican period

Dimensions: 7 7/8" (20cm) L, 5 1/8" (13cm) W, 2 1/4" (5.7cm) H

Complete eight-volume set of pictures. Text in traditional Chinese. Paper covers, string four hole stab binding.

Provenance: Yangtze Art Gallery

《停雲閣丛画》民国石拓本全8册

Estimate: \$200-\$300



167

ANTIQUA CHINESE BOOKS COMPLETE EIGHT-VOLUME SET: QING HE SHU HUA FANG

China

Dimensions: 8" (20.3cm) L, 5 3/8" (13.7cm) W, 1 1/2" (3.8cm) H

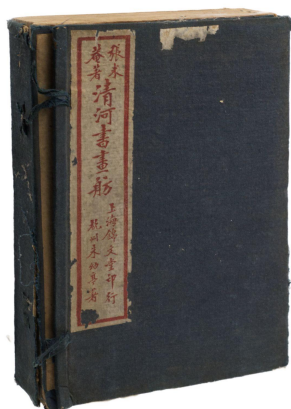
Complete eight-volume set with hard cover. Text in traditional Chinese. Paper covers, string four hole stab binding.

Provenance: Yangtze Art Gallery

《清河书画舫》8册

Estimate: \$200-\$300

168



**ANTIQUe CHINESE BOOKS
COMPLETE SIX-VOLUME SET:
QING DAI HUA SHI**

China, early Republican period
Dimensions: 8" (20.3cm) L, 5 1/2" (14cm)
W, 2 1/4" (5.7cm) H

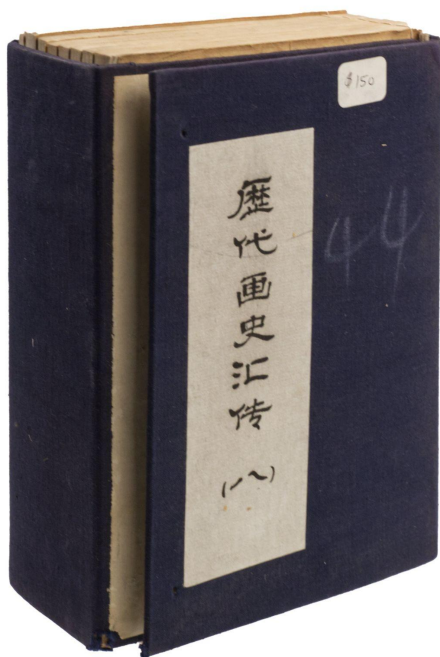
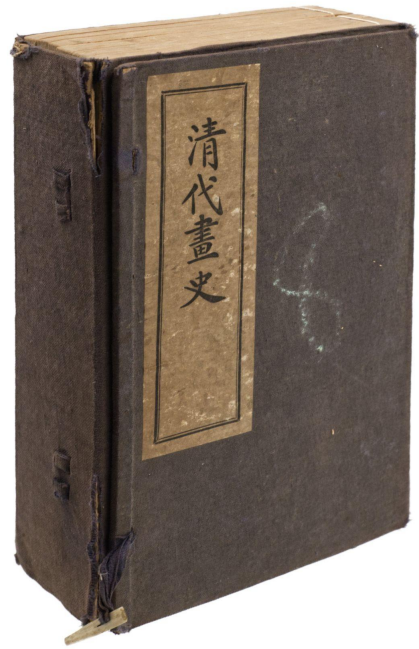
Complete six-volume set with hard cover.
Text in traditional Chinese. Paper covers,
string four hole stab binding. Collector's
seals.

Provenance: Yangtze Art Gallery

《清代画史》民国拓本全6册

Estimate: \$200-\$300

169



**ANTIQUe CHINESE BOOKS
EIGHT-VOLUME SET: LI DAI
HUA SHI HUI ZHUAN (VOL. 8)**

China
Dimensions: 8" (20.3cm) L, 5 1/2" (14cm) W,
2 3/4" (7cm) H

Eight-volume set with hard cover. Text in
traditional Chinese. Paper covers, string four
hole stab binding. Collector's seals.

Provenance: Yangtze Art Gallery

《历代画史汇传(八)》1940年拓本

Estimate: \$200-\$300

170



**ANTIQUA CHINESE BOOKS
SIX-VOLUME SET: OU BO LUO
SHI SHU HUA GUO MU KAO**

China, Republican period
Dimensions: 7 7/8" (20cm) L, 5 1/4"
(13.3cm) W, 1 1/4" (3.2cm) H

Six-volume set with wood cover. Text in traditional Chinese. Paper covers, string four hole stab binding.

Provenance: Yangtze Art Gallery

《瓠钵罗室书画过目考》民国线装本6册

Estimate: \$200-\$300

171

ANTIQUA CHINESE BOOK QI BAI SHI HUA CE

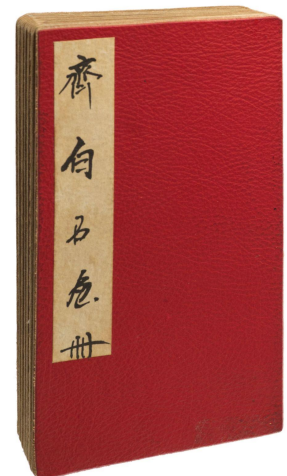
China
Dimensions: 9 1/4" (23.5cm) L, 5" (12.7cm) W, 1 1/2" (3.8cm) H

A collection of selected Qi Baishi's paintings. With hard cover.

Provenance: Yangtze Art Gallery

《齐白石画册》

Estimate: \$200-\$300



172

**ANTIQUA CHINESE BOOKS
TWO-VOLUME SET: YU ZHU XIAO JING**

China, Qing dynasty, 1656
Dimensions: 1: 15" (38cm) L, 9 7/8" (25cm) W, 1" (2.5cm) H; 2: 16 1/4" (41.3cm) L, 8 3/4" (22.2cm) L, 3/4" (1.9cm) H

Comprising 2 volumes of texts. Text in traditional Chinese. Paper covers, with silk cover.

Provenance: Yangtze Art Gallery

清《御注孝经》2册

Estimate: \$300-\$500

173



**ANTIQUe CHINESE BOOK COMPLETE
FOUR-VOLUME SET: ZHONG WU CI MU
ZHI - JIA QING 8 YEAR (1803)**

China, Qing dynasty
Dimensions: 10 3/4" (27.3cm) L, 7" (17.8cm) W,
1 3/8" (3.5cm) H

Comprising 4 volumes of texts with hard cover.
Text in traditional Chinese. Paper covers, string
four hole stab binding.

Note: 《忠武侯祠墓志》为清代嘉道间汉中府沔县
(今勉县)武侯祠墓住持虚白道人编修, 汇集武侯
诸葛亮祠、墓及其相关资料而成。

Provenance: Yangtze Art Gallery

《忠武祠墓志》嘉庆八年刻本4册

Estimate: \$300-\$500



174

**ANTIQUe CHINESE BOOKS
COMPLETE TWELVE- VOLUME SET:
LI DAI HUA SHI HUI ZHUAN, 1922**

China, Republican 11 Year (1922)
Dimensions: 8" (20.3cm) L, 5 1/4" (13.3cm) W, 2
1/2" (5.7cm) H (12)

A History of Painting Through the Ages

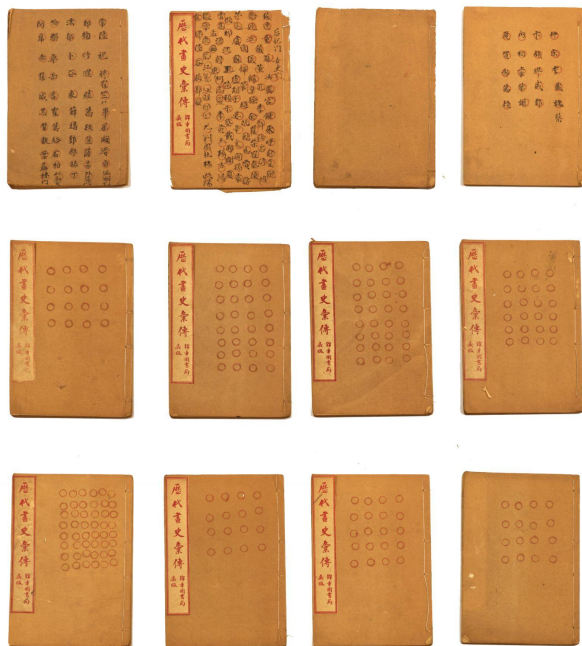
Twelve-volume (50 Chinese juan) set, complete.
Text in traditional Chinese. Paper covers, string four
hole stab binding, and printed on folded leaves.

Includes more than 1,500 painters and their works
from the ancient Yellow Emperor (2711 BC - 2599
BC) to the Jiaqing and Daoguang periods in Qing
Dynasty.

Provenance: Yangtze Art Gallery

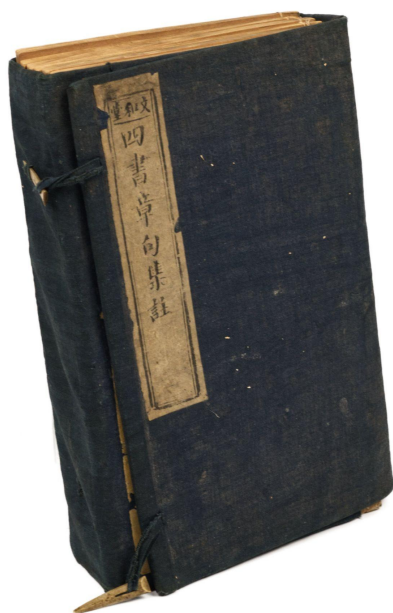
《歷代畫史彙傳》錦章圖書局藏版 12册

Estimate: \$300-\$500



175

ANTIQUA CHINESE BOOKS SIX-VOLUME SET: SI SHU ZHANG JU JI ZHU, 1826



China, 1826

Dimensions: 9 5/8" (24.4cm) L, 6 1/2" (16.5cm) W, 2" (5cm) H

Six-volume set with hardcover. Text in traditional Chinese. Paper covers, string four hole stab binding.

Note: 《四书章句集注》是一部儒家理学名著，为南宋朱熹所著，是四书的重要的注本。其内容分为《大学章句》(1卷)、《中庸章句》(1卷)、《论语集注》(10卷)以及《孟子集注》(14卷)。

Provenance: Yangtze Art Gallery

《四书章句集注》1826年版

Estimate: \$300-\$500

176

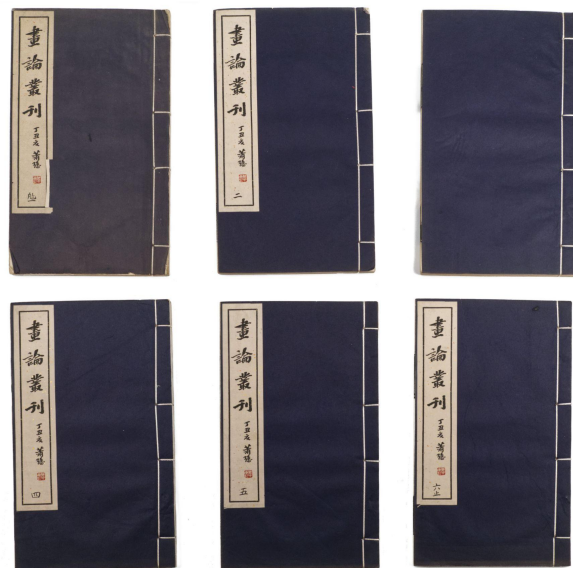
ANTIQUA CHINESE BOOKS SIX-VOLUME COMPLETE SET: HUA LUN CONG KAN, 1936

China, 1936

Dimensions: 10 1/8" (25.7cm) L, 6" (15.2cm) W, 2 3/8" (6cm) H (6)

Six-volume set, complete. Text in traditional Chinese. Paper covers, string four hole stab binding.

Note: 于安澜校辑，中华印书局民国二十六年排印本，16开线装6册全。此书全套六册，此应为两套所配，推测应为民国某旧书店收到第二到第六册，撤去版权页，重写书根，表明共五册，以残充全。后藏家自行配到了第一册，才恢复全璧，不过版权页已经丢了(原在第六册封三处)，第二册封面品相不好。题签均用萧谦中所写。齐白石题端。卷首影印余绍宋序，郑午昌序，均影印原书迹。另收《作家事略》，介绍所收书作者。全书收录古代画学著作五十二种，附录《装潢志》《赏延素心录》两种，合计五十四种。



Provenance: Yangtze Art Gallery

《画论丛刊》中华印书局1936年排印本16开线装全6册

Estimate: \$300-\$550

177

ANTIQUA CHINESE BOOKS COMPLETE FIVE-VOLUME ORIGINAL SET: JIE ZI YUAN HUA ZHUAN, QING DYNASTY

China, Qing dynasty

Dimensions: 11 3/4" (29.8cm) L, 7 1/2" (19cm) W, 2 1/4" (5.7cm) H

Comprising 5 volumes of texts and polychrome images with hard cover. Text in traditional Chinese. Paper covers, string four hole stab binding. Collector's seals.

Includes text and picture instructions for painting techniques.

Note: 《芥子园画传》又称《芥子园画谱》，是清代绘画技法图谱，它较系统地介绍了中国画的基本技法。清代文学家李渔曾在南京营造“芥子园”，并支持其婿沈心友及王氏三兄弟（王概、王蓍、王臬）编绘画谱，故成书出版之时便以此园命名。此为清康熙年间初印版。

Provenance: Yangtze Art Gallery

清《芥子园书传》原版初印共5册

Estimate: \$400-\$600



178

ANTIQUA CHINESE BOOKS COMPLETE FIVE-VOLUME ORIGINAL SET: JIE ZI YUAN HUA ZHUAN, QING DYNASTY

China, Qing dynasty

Dimensions: 11 1/4" (28.6cm) L, 7" (17.8cm) W, 1 7/8" (4.8cm) H

Comprising 5 volumes of texts and polychrome images with hard cover. Text in traditional Chinese. Paper covers, string four hole stab binding.

Includes text and picture instructions for painting techniques.

Note: 《芥子园画传》又称《芥子园画谱》，是清代绘画技法图谱，它较系统地介绍了中国画的基本技法。清代文学家李渔曾在南京营造“芥子园”，并支持其婿沈心友及王氏三兄弟（王概、王蓍、王臬）编绘画谱，故成书出版之时便以此园命名。此为清康熙年间初印版。

Provenance: Yangtze Art Gallery

清《芥子园书传》原版初印共5册

Estimate: \$400-\$600



179



**ANTIQUe CHINESE BOOKS
COMPLETE TEN-VOLUME SET: NEI
WU BU GU WU CHEN LIE SUO SHU
HUA MU LU, 1925**

China, Republican period, 1925

Dimensions: 10 1/2" (26.7cm) L, 5 1/2" (14cm) W,
4 1/4" (10.8cm) H

Provenance: Guangzhou Jiyazhai sticker, Yangtze
Art Gallery

民国《内务部古物陈列所书画目录》全十册

Estimate: \$400-\$600

180

**ANTIQUe CHINESE BOOKS COMPLETE
SET: YI ZHOU SHU HUA LU**

China

Dimensions: 10 3/8" (26.4cm) L, 6 7/8" (17.5cm) W,
1" (2.5cm) H

Three-volume set. Text in traditional Chinese. Paper
covers, string four hole stab binding.

Note: 《益州名画录》，又名《成都名画记》，中国北宋绘
画史著作，黄休复编撰。《益州名画录》是一部记述唐、
五代至宋初以西蜀寺院壁画创作为主要内容的地区性
画史。

Provenance: Yangtze Art Gallery

《益州书画录》刻本三册

Estimate: \$400-\$600



181

ANTIQUA CHINESE BOOKS FOUR-VOLUME SET: QIN DING GONG ZHONG XIAN XING ZE LI

China

Dimensions: 11 1/8" (28.3cm) L, 7 1/8"
(18cm) W, 1 5/8" (4cm)

Four-Volume set. Text in traditional
Chinese. Paper covers, string four hole stab
binding.

A detailed account of the palace
management system.

Provenance: Zhong Guo Shu Dian sticker,
Yangtze Art Gallery

《钦定宫中现行则例》4册

Estimate: \$400-\$600



182

183

ANTIQUA CHINESE BOOKS FOUR-VOLUME SET: JIN SHI QI



China, Qing dynasty

Dimensions: 10 3/8" (26.4cm) L, 6 5/8" (16.8cm)
W, 2" (5cm) H

Four-volume set with wood cover. Text in
traditional Chinese. Paper covers, string four hole
stab binding. Collector's seals.

Provenance: Zhong Guo Shu Dian sticker,
Yangtze Art Gallery

Note: 張燕昌(1738年—1814年), 字芑堂, 號文魚, 又號金粟山人, 浙江海鹽人, 中國
篆刻家、書法家、畫家。

《金石契》張燕昌編 清刻本4册

Estimate: \$400-\$600



**ANTIQUAE CHINESE BOOKS COMPLETE
TWO-VOLUME: JI JIN LU, 1885**

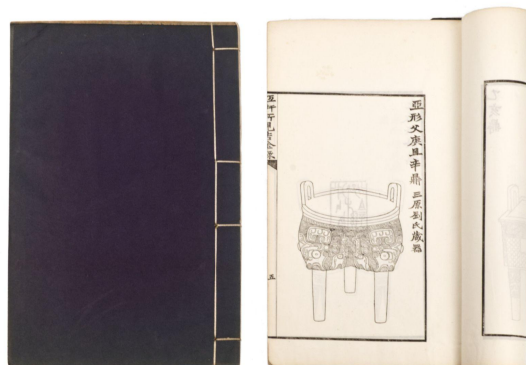
China, Qing dynasty, Guangxu Year 11
Dimensions: 1: 13 1/2" (34.3cm) L, 8 5/8"
(21.9cm) W, 3/8" (1cm) H; 2: 13 1/4" (33.7cm)
L, 8 5/8" (21.9cm) W, 1/2" (1.3cm) H;

Comprising 2 volumes of texts. Text in
traditional Chinese. Paper covers, string four
hole stab binding. Wu Dajing's seal (collector).

Provenance: Yangtze Art Gallery

清光绪《恒轩所见所藏 吉金录》全2册

Estimate: \$500-\$700



184



**ANTIQUAE CHINESE BOOKS COMPLETE
TWO-VOLUME SET: SHI QIN LU CONG
KAN, REPUBLICAN PERIOD**

China, Republican period
Dimensions: 10 1/2" (26.7cm) L, 5 1/2" (14cm) W, 4
1/4" (10.8cm) H

Comprising 2 volumes of texts with pictures. Text in
traditional Chinese. Paper covers, string four hole stab
binding.

Provenance: Yangtze Art Gallery

民国《石琴庐丛刊》全2册 张之汉仙舫著

Estimate: \$500-\$700

185

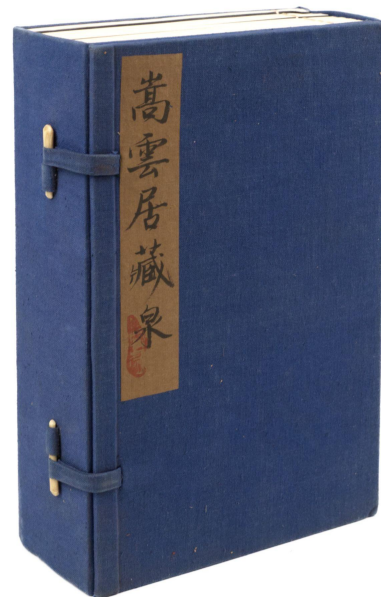
ANTIQUA CHINESE BOOKS COMPLETE EIGHT-VOLUME SET: SONG YUN JU CANG QUAN, REPUBLICAN PERIOD

China, Republican period

Dimensions: 10" (25.4cm) L, 6 1/4" (15.9cm) W, 2 3/4" (7cm) H

Comprising 8 volumes of texts with pictures. Text in traditional Chinese. Paper covers, string four hole stab binding. Collector's seals.

Note: 是书以版心镌 嵩云居藏泉 之蓝格纸本拓印而成。收历代古钱范精品上百种, 均为原拓, 为著名收藏家徐梦华藏品集拓, 前书名为徐氏亲笔题写, 为自留之底本。其传世有藏泉, 藏印、藏镜三种, 其中尤以藏泉拓本最为稀少。拓本纹样清晰, 拓工精湛传神。藏者简介: 嵩云居斋主徐梦华(1900-1975), 又名清机、梦花, 斋名为嵩云居, 江苏川沙(今属上海市)人, 毕业于上海美华书院。平生好古, 集藏古玩、书画2万余件。先后向博物馆捐赠青铜器、陶瓷器、砚台等文物169件, 图书4798册。除有《嵩云居藏镜》之外, 尚有拓本《嵩云居藏印》、《嵩云居藏泉》等书存世。



Provenance: Yangtze Art Gallery

民国《嵩云居藏泉》

Estimate: \$500-\$700

186

ANTIQUA CHINESE BOOKS COMPLETE EIGHT-VOLUME SET: SONG YUN JU CANG QUAN, REPUBLICAN PERIOD

China, Republican period

Dimensions: 10" (25.4cm) L, 6 1/4" (15.9cm) W, 2 3/4" (7cm) H

Comprising 8 volumes of texts with pictures. Text in traditional Chinese. Paper covers, string four hole stab binding. Collector's seals.



Note: 是书以版心镌 嵩云居藏泉 之蓝格纸本拓印而成。收历代古钱范精品上百种, 均为原拓, 为著名收藏家徐梦华藏品集拓, 前书名为徐氏亲笔题写, 为自留之底本。其传世有藏泉, 藏印、藏镜三种, 其中尤以藏泉拓本最为稀少。拓本纹样清晰, 拓工精湛传神。藏者简介: 嵩云居斋主徐梦华(1900-1975), 又名清机、梦花, 斋名为嵩云居, 江苏川沙(今属上海市)人, 毕业于上海美华书院。平生好古, 集藏古玩、书画2万余件。先后向博物馆捐赠青铜器、陶瓷器、砚台等文物169件, 图书4798册。除有《嵩云居藏镜》之外, 尚有拓本《嵩云居藏印》、《嵩云居藏泉》等书存世。

187

Provenance: Yangtze Art Gallery

民国《嵩云居藏泉》

Estimate: \$800-\$1000

**ANTIQUA CHINESE BOOKS
SIXTEEN-VOLUME SET: QIN DING SHU
JING TU SHUO, 1905**



China, Qing dynasty, Guangxu period
Dimensions: 1: 13" (33cm) L, 9" (22.9cm) W, 3 1/4" (8.3cm)
;2: 13" (33cm) L, 9" (22.9cm) W, 1 3/4" (4.4cm); 3: 13"
(33cm) L, 9" (22.9cm) W, 2 3/8" (6cm); 4: 13" (33cm) L, 9"
(22.9cm) W, 2 3/4" (7cm)

Comprising 16 volumes of texts and images with hard cover. Text in traditional Chinese. Paper covers, string four hole stab binding.

Note: 此《钦定书经图说》是清光绪年间孙家鼐等奉慈禧太后懿旨编纂。全书两函十六册共五十卷，内容为儒家经典《尚书》全文配绘插图，含版画约五百七十幅。其中一些礼仪场景参考了儒家经典记载，具有文献艺术等多方面的参考价值。此为清光绪年间内府石印本。

Provenance: Yangtze Art Gallery

《钦定书经图说》光绪31年刻本 四册共16本

Estimate: \$1000-\$1500

188

**ANTIQUA CHINESE BOOKS SIXTEEN-VOLUME SET: QIN DING SHU
JING TU SHUO, 1821**



China, Qing dynasty, Daoguang period
Dimensions: 14" (35.6cm) L, 10 1/4"
(26cm) W, 5 3/8" (13.7cm) H

Comprising 12 volumes of texts and images with hard cover. Text in traditional Chinese. Paper covers, string four hole stab binding.

Note: 《金石索》是一部综合性古器物图谱，为清代金石学重要著作。编者冯云鹏、冯云鹞兄弟遍访古迹古物，并对收集来的金石作品进行考证，完成了几十万字的考证文字。嘉庆二十五年开始请画工绘图，道光元年开始印刷，道光三年完成出版。

自宋以来，金石着录多限于一类。考古博古，专于金而缺于石；隶释隶续则详于石而略于金。此书则金石兼备，为以前图录所未有。全书十二卷，金索六卷收商周到汉和宋元时的钟鼎、兵器、权量杂器，以及历代钱币、玺印和铜镜等。石索六卷收历代石刻，以及带字的砖和瓦当。每种器物大多有器形图和铭文拓本，后面有冯氏的释文或考订。书中所用材料，一部分为作者的藏品，一部分则采自黄易、叶志洗、桂馥等当时名家，还有的采自宋代和清代的各家钟鼎款识或专著。



Provenance: Yangtze Art Gallery

清《金石索》共12册 道光元年

Estimate: \$1000-\$1500

189

**FOUR-VOLUME SET OF ILLUSTRATED CATALOGUE
OF CHINESE GOVERNMENT EXHIBITS FOR THE
INTERNATIONAL EXHIBITION OF CHINESE ART IN
LONDON. THE CHINESE ORGANIZING COMMITTEE,
EDITOR. NANKING: N.P., 1936.**

190

China, Republican period, 1935
Dimensions: 10 5/8" (27cm) L, 7 3/4" (19.7cm)
W, 2 3/4" (7cm) H(4)

4 volumes. Text printed in English and
Chinese, illustrated. Original blue cloth.

Provenance: Yangtze Art Gallery

民国《参加伦敦中国艺术国际展览会出品图说》
全4册

Estimate: \$1600-\$2000



**HAMMERED COPPER KENDI
KUNDIKA, TIBET, 19TH CENTURY**

Tibet, 19th century
Dimensions: 7 1/8" (18.1cm) H

Of globular body attached to a spout molded
in the shape of an elephant trunk, with an
splayed foot and a slender neck extending to
a canopy with a lotus flower design at the
top.

19世纪 西藏刻花象鼻壶

Estimate: \$200-\$300



193

RARE SET OF TSAKALI INITIATION CARDS, TIBET, 19TH CENTURY

Tibet, 19th century
Tempera on card with wood covers
Dimensions: 4" (10.2cm) W, 6 1/8" (15.6cm) L, 2 1/4"
(5.7cm)

Including 27 images of Dakini (sky walkers) many
with animal heads, 9 Buddhas and bodhisattvas, 3
human figures and 3 animals and Buddhist 1
symbol.(43 + 2 covers)

19世纪 西藏沙卡利套牌

Estimate: \$200-\$300



194

**POLYCHROME GILT BRONZE
IMAGE OF MARICI, NEPAL**

Nepal
Dimensions: 7" (17.8cm) H

Polychrome gilt bronze statue of standing
Marice.

尼泊尔 铜鎏金加彩佛像

Estimate: \$200-\$400



195



**BRONZE FIGURE OF A TEACHING
LAMA**

Tibet
Dimensions: 2 1/4" (5.7cm) H

Seated statue of a lama preaching and
teaching.

西藏 传道喇嘛铜像

Estimate: \$200-\$400

196

POLYCHROME GILT BRONZE FIGURE OF ACALA, TIBET

Tibet
Dimensions: 9" (22.9cm) H

The figure powerfully striding in
alidhasana over the prostrated figure of
Vighnanraja while holding his sword aloft,
the other hand in tarjani mudra holding a
noose.

西藏 铜加彩不动明王像

Estimate: \$300-\$500



197



BRONZE FIGURE OF A KARMAPA/KAGYU LAMA, 18TH CENTURY, TIBET OR MONGOLIA

Tibet or Mongolia, 18th century
Dimensions: 2 1/2" (6.4cm) H

Seated on an incised lotus base, his right hand in bhumisparshamudra and his left holding the triratna, clad in heavy robes incised with a foliate pattern, the face with steady gaze surmounted by a hat.

18世纪 噶玛巴铜像

Estimate: \$300-\$500

198

BRONZE FIGURE OF SAKYAMUNI/AKSOBHYA, 19TH CENTURY

Tibet, 19th century
Dimensions: 3 3/8" (8.6cm) H

Seated on a lotus base in rajalilasana. His right hand resting on his raised knee and with the left supporting himself. Serene facial expression with downcast eyes.

19世纪 西藏释迦穆尼铜像

Estimate: \$300-\$500



199



THANGKA MANDALA OF USNISA SITATAPATRA, 19TH CENTURY

Tibet, 19th century
Mounted and framed
Pigment on Cotton
Dimensions: 24 1/4" (61.6cm) L, 18 1/4" (46.4cm) W (With Frame)

Portrait of Sitatapatra depicted on a lotiform base resting on zoomorphic deities. Holding the cakra and the parasol in her main hands, with thousands of her arms radiating around her, surrounded by flames and surmounted by the seven Buddhas of the past.

19世纪 西藏大白伞盖佛母唐卡

Estimate: \$300-\$500

200

BRONZE BODHISATTVA MANJUSRI, MONGOLIA, 19TH TO EARLY 20TH CENTURY

Mongolia, 19th to early 20th century
Dimensions: 7" (17.8cm) H

Seated on a lotus base with hands crossed
in front of the chest. Serene facial
expression, well dressed and ribboned.

19-20世纪 蒙古文殊菩萨铜坐像

Estimate: \$400-\$600

201



THANGKA MANDALA OF PROTECTOR PEHAR GYALPO, 19TH CENTURY

202

Mongolia or Tibet, 19th century

Mounted and framed

Pigment on Cotton

Dimensions: 26 5/8" (67.6cm) L, 20 5/8" (52.4cm) W (With
Frame)



Thangka of the same iconography can be found in the
collection of the Rubin Museum, New York. acc.#
P1996.16.7

<https://www.himalayanart.org/items/283>

Thangka of Pehar Gyalpo with Padmasambhava. Pehar
Gyalpo with Padmasambhava is from nyingma lineage.
Pehar Gyalpo with different deities such as Shing Cha Chen,
and Dra Lha Kye Chigbu, etc. Padmasambhava is at the top
center of the thangka, also known as Guru Rinpoche.
Padmasambhava has one face and two hands. The right
hand of Padmasambhava holds a Vajra. The left hand of
Padmasambhava holds a skullcup supported in the lap. He
is richly attired in various robes and wears a lotus hat. He is
seated on a pink lotus above a dragon on a pink cloud.

Shing Cha Chen is at the top left of the thangka. Shing Cha Chen is known as the King of
Qualities. Shing Cha Chen has natural color with one face and two hands holding a hook and
lasso. Shing Cha Chen is wearing garments similar to the central figure. Dra Lha Kye Chigbu is
at the right of the thangka. Dra Lha Kye Chigbu is known as the King of Speech. Dra Lha Kye
Chigbu is red in color holding a stick of cane and a stick of sandalwood.

Gya Jin is at the bottom right of the thangka. Gya Jin is known as the King of Mind. Gya Jin is
blue in color. Gya Jin is with one face and two hands holding a knife and lasso. Gya Jin is riding
a white elephant above a sun disc and lotus.

19世纪 西藏世俗神唐卡

Estimate: \$500-\$700

**BRONZE FIGURE OF
KARMAPA LAMA, 17TH-18TH
CENTURY**

Tibet, 17th-18th century
Dimensions: 4 3/8" (11cm) H

Modelled seated on a square base, his legs crossed under his long robes and hands together resting on his lap, with serene expression and wearing hat.

17-18世纪 噶玛巴喇嘛铜像

Estimate: \$600-\$800



203

**SILVERED BRONZE FIGURE OF
NAGA RAJA SNAKE KING,
18TH-19TH CENTURY**

Nepal, 18th-19th century
Dimensions: 2 5/8" (6.7cm) H

Seated on a lotus base, holding a scepter entwined with a snake in his right hand extending to his left hand.

18-19世纪 蛇神守护者纳卡镀银铜像

Estimate: \$600-\$800



204

**BON TRADITION THANGKA
MANDALA OF ADI BUDDHA
SHAKTI, 19TH-20TH CENTURY**

Tibet, 19th-20th Century
Hanging scroll
Pigment on Cotton
Dimensions: 25" (63.5cm) L, 23" (58.4cm) W

Depicting Samadabhadra Yabum seated in the center and various Buddha statues with haloes.

19-20世纪 西藏普贤王如来唐卡

Estimate: \$1000-\$1500



205

FENG SHUI GEOMANCY COMPASS SET AND CASE, QING DYNASTY

China, Qing dynasty

Dimensions: 1: 7" (17.8cm) Dia; 2: 6 5/8" (16.8cm) Dia; 3: 4 1/2" (11.4cm) L, 2 1/8" (5.4cm) W, 5/8" (1.6cm) H

Comprising a circular compass, and a compact sundial compass, with cover. (3pcs)

Provenance: Butterfield's San Francisco
28JUL97

清 风水占卜罗盘一套

Estimate: \$200-\$400



206

JADE CARVED COURTESAN STATUE (LAMPED), 20TH CENTURY

China, 20th century

Dimensions: 35 1/8" (89.2cm) H

Jade carved courtesan statue with her hands holding a lotus flower, attached to an electrified bronze base decorated with floral motifs.

20世纪 玉雕持花仕女像灯座

Estimate: \$100-\$200



207



COPPER-RED FLORAL LAMPED JAR

China
Dimensions: 28 1/2" (72.4cm) H
electrified

Lamped porcelain jar decorated with copper-red floral patterns.

折枝花卉釉里红罐台灯

Estimate: \$100-\$200

208

FAMILLE ROSE GU-SHAPED PEACOCK VASE (LAMPED), 20TH CENTURY

China, 20th century
Dimensions: 20 1/2" (52.1cm) H

Famille rose gu-shaped lamp decorated with peacock and floral motifs, attached to an electrified base.

清末 红釉掸瓶台灯

Estimate: \$400-\$600

209



COPPER RED GLAZED BALUSTER VASE (LAMPED), 20TH CENTURY

China, 20th century
Dimensions: 19" (48.3cm) H

Copper red glazed baluster vase attached to electrified appliances attached to the upper rim and the base.

清 粉彩开光花鸟纹渣斗瓶台灯

Estimate: \$400-\$600

210





HARDWOOD AND BONE CARVED MAH JONG SET, REPUBLICAN PERIOD

China, Republican period
Dimensions: 9 7/8" (25.1cm) W 6 3/8"
(16.2cm) L 6 3/4" (17.1cm) H Mah Jong
dimensions variable

Hardwood carved cabinet with five
drawers with bone carved Mah Jong set.

民国 硬木骨雕麻将套组

Estimate: \$700-\$900

211

PAIR OF MINIATURIZED SILVER ARM CHAIRS, EARLY 20TH CENTURY

China, ca 1900
Dimensions: 1 1/4" (3.2cm) W, 1 1/2" (3.8cm) H,
1" (2.5cm) L. (2 Pcs)

Pair of silver miniaturized armed chairs with
square backrests for overseas markets, the back
decorated with bats and shou-character motifs,
the bottom engraved with the word Lin and the
number 90. (2pcs)

20世纪初 中国出口银质迷你太师椅一对

Estimate: \$200-\$300



212

EXPORT FAMILLE ROSE SQUARED FLORAL BOWL

China, 20th century
Dimensions: 3" (7.6cm) H, 6" (15.2cm) L

Famille rose turquoise-ground squared bowl decorated
with floral and leafy motifs, the interior decorated with
peony flowers, red-glazed Qianlong mark and Roman
inscription CHINA to the base.

出口 粉彩花卉纹高足方碗 乾隆年制款

Estimate: \$200-\$300



213⁹⁵

**PAIR OF EXPORT GILT POLYCHROME
GLAZED FLORAL BOWLS, 20TH CENTURY**

China, 20th century
Dimensions: 12 1/8" (30.8cm) Dia, 5
1/2" (14cm) H (2)

Overall decorated with polychrome
floral patterns. (2pcs)

20世纪 出口万花不落地大碗一对

Estimate: \$400-\$600



214

**PEKING GLASS COPYING
REALGAR BALUSTER VASE,
19TH CENTURY**

China, 19th century
Dimensions: 8" (20.3cm) H

19世纪 北京玻璃花瓶

Estimate: \$300-\$500



215

TIGER'S EYE STONE CARVED ARCHAISTIC COVERED VASE

China
Dimensions: 9 7/8" (25.1cm) H (with stand)

Tiger's eye stone carved zun-shaped vase decorated with archaistic
taotie and geometric patterns, attached with two jagged handles,
together with a wood stand.

饕餮纹虎眼石带盖花尊

Estimate: \$400-\$600

216



QUARTZ STONE INCENSE BURNER (WITH STAND)

Dimensions: 7 1/4" (18.5cm) H

Tripod incense burner carved with quartz stone.

石英石香炉

Estimate: \$100-\$300

217



WOOD CARVED FIGURAL GROUP STATUE

China

Dimensions: 11" (28cm) H

Depicting a bearded man on a horse, accompanied by a servant.

木雕人物像

Estimate: \$50-\$100

218

WOOD CARVED BRONZE AND MOTHER-OF-PEARL INLAID TRAY

China

Dimensions: 12 3/8"(31.5cm) W, 7 7/8"(20.07cm) L, 5/8"(1.6cm) H

Wood carved tray decorated with bronze and mother-of-pearl inlaid floral patterns.

硬木嵌螺钿托盘

Estimate: \$100-\$150



219

YUMU CARVED FOLDING TRAVEL HATSTAND, QING DYNASTY

China, Qing dynasty, 19th century
Dimensions: 12 3/8" (31.4cm) H

Yumu wood carved folding travel hatstand decorated with openwork geometric and cloud motifs.

清 榆木雕折叠帽架

Estimate: \$200-\$300



220

HARDWOOD OVAL STAND, 18TH-19TH CENTURY

China, 18-19th century
Dimensions: 4 1/2" (11.4cm) L, 7 5/8" (19.4cm) W, 2" (5cm) H

Hardwood carved stand decorated with leafy patterns.

18-19世纪 硬木雕花底座

Estimate: \$300-\$500



221

PAIR OF WOOD CARVED OPENWORK STANDS

China
Dimensions: 8 1/4" (21cm) H

Pair of wood carved openwork stands decorated with scrolling leaves. (2pcs)

镂雕卷草纹木座一对

Estimate: \$400-\$600



222

MING WOOD STATUE OF GUANYIN, 15TH-16TH CENTURY

China, 15th-16th century
Dimensions: 10 1/8" (25.7cm) H

Wood carved Buddha statue seated in rajalilasana on a throne. His right hand resting on his raised knee and with the left supporting himself. Serene facial expression with downcast eyes.

15-16世纪 木雕观音像

Estimate: \$400-\$600



223



2 TINS OF FUJIAN PAI MU TAN TEA

Dimensions: 150g NW (2)

2 tins of Pai Mu Tan tea originally produced by Fujian Tea Import & Export Co., Ltd. (2pcs)

福建向陽花牌白牡丹茶2罐

Estimate: \$300-\$500

224

2 BOXES OF AN QI TI KUAN YIN TEA, 1970-1980S

China, 1970-1980s
Dimensions: 125g NW (2)

Original article No. AT104 (2pcs).

70-80年代 安溪铁观音2盒

Estimate: \$400-\$600



225



1 BOX OF TACK KEE & CO. WU LUNG TEA, REPUBLICAN PERIOD

China, Republican period
Dimensions: 196g (with box)

Kept in its original package and sealed with a sticker.

民国“龙德记”字号拣选金圃乌龙茶

Estimate: \$700-\$900

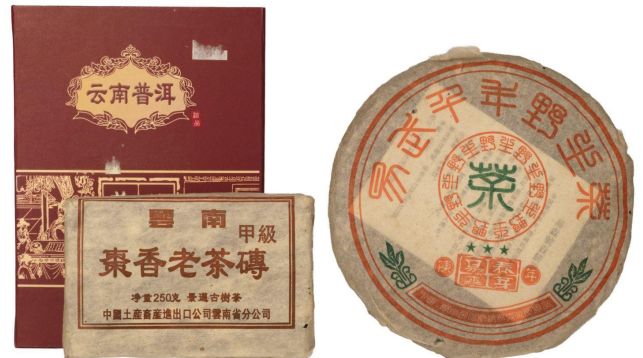
226

SET OF 2 CHINESE TEA PACKS

China, 1990s-2000
Dimensions: 1: 250g NW; 2: 359g NW

2000年易武千年野生茶一饼及90年代云南甲级普洱老茶砖一块

Estimate: \$200-\$300



227

4 PACKS OF CHINESE TEA

Dimensions: 1: 250g NW; 2和3: 227g NW; 4: 619g (including the package)

Comprising 2 cans of Loong Tseng Tea originally produced by Guangsheng Tea Set Brand, 1 pack of Lu'an tea originally produced by Hukien Tea CO., and 1 box of Pu-Erh tea. (4pcs)

90年代香六安一包, 广生龙凤岩茶2盒, 云南甲级枣香老茶砖一盒, 共四件

Estimate: \$300-\$500

228



4 PACKS OF CHINESE TEA

Dimensions: 1: 250g NW; 2和3: 227g NW; 4: 619g (including the package)



Comprising 2 cans of Loong Tseng Tea originally produced by Guangsheng Tea Set Brand, 1 pack of Lu'an tea originally produced by Hukien Tea CO., and 1 box of Pu-Erh tea. (4pcs)

90年代香六安一包, 广生龙凤岩茶2盒, 云南甲级枣香老茶砖1盒

Estimate: \$300-\$500

229

7 PACKS OF YUNNAN CHI TSE BEENG CHA

China, 1994

Dimensions: 2632g (including the package)

1994年云南七子饼茶一桶(7饼)西双版纳勐海茶厂熟茶

Estimate: \$3000-\$5000

230



2 BOXES OF PU-ERH TUO TEA, 1970S

Dimensions: 1: 94g NW; 2: 103g NW

2 boxes of Pu-Erh Tuo tea, French export from Xiaguan Tea Factory.

编号7663, 云南下关茶厂出品, 70年代云南沱茶出口产品(销法国), 同类产品在香港苏富比售出\$3000港币/盒。

70年代 云南沱茶(销法国)2盒

Estimate: \$200-\$300



231

2 BOXES OF PU-ERH TUO TEA, 1970S

Dimensions: 1:123g NW; 2: 93g NW

2 boxes of Pu-Erh Tuo tea, French export from XiaguanTea Factory.

编号7663, 云南下关茶厂出品, 70年代云南沱茶出口产品(销法国), 同类产品在香港苏富比售出\$3000港币/盒。

70年代 云南沱茶(销法国)2盒

Estimate: \$200-\$300



232



233

2 BOXES OF PU-ERH TUO TEA, 1970S

Dimensions: 1: 103.5g NW; 2: 101.5g NW

2 boxes of Pu-Erh Tuo tea, French export from XiaguanTea Factory.

编号7663, 云南下关茶厂出品, 70年代云南沱茶出口产品(销法国), 同类产品在香港苏富比售出\$3000港币/盒。

70年代 云南沱茶(销法国)2盒

Estimate: \$200-\$300



234

2 BOXES OF PU-ERH TUO TEA, 1970S

Dimensions: 1: 100g NW; 2: 113g NW

2 boxes of Pu-Erh Tuo tea, French export from Xiaguan Tea Factory.

编号7663, 云南下关茶厂出品, 70年代云南沱茶出口产品(销法国), 同类产品在香港苏富比售出\$3000港币/盒, (附链接)



70年代 云南沱茶(销法国)2盒

Estimate: \$200-\$300

235

HONG KONG LI'AN TEA CO. PU'ER TEA, 1990S



Hong Kong, 1990s

Dimensions: 5 Lbs

1 tin of Pu-Erh tea by Hong Kong Li'an Tea CO. produced specifically for Chahuangting under Hsin Kuang Restaurant Group.

Note: 供應商香港利安茶行

1990年代 新光灑樓茶皇廳專用茶

Estimate: \$300-\$500

236

HONG KONG LI'AN TEA CO. PU'ER TEA, 1990S

Hong Kong, 1990s

Dimensions: 5 Lbs

237

1 tin of Pu-Erh tea by Hong Kong Li'an Tea CO. produced specifically for Chahuangting under Hsin Kuang Restaurant Group.

Note: 供應商香港利安茶行

1990年代 新光灑樓茶皇廳專用茶

Estimate: \$300-\$500



YIXING ZISHA LOTUS SEED TEA POT

China

Dimensions: 2 1/2" (6.4cm) H

Yixing zisha teapot with lotus-shaped lid and artist's mark on the inside of the lid and on the bottom of the pot.

宜兴紫砂壶

Estimate: \$300-\$500

238



2 SETS OF MEMORIAL SILVER MEDALLIONS OF XU BEIHONG AND QI BAISHI, 1997

Hong Kong, 1997

Dimensions: 1 1/4" (3.2cm) Dia (4)

Comprising 2 sets of silver medallions with head portraits of Xu Beihong and Qi Baishi, in memorial of these two great Chinese painters in the Exhibition of Chinese Painting, Hong Kong, 1997. (2pcs)

1997 徐悲鸿齐白石银质纪念章2套

Estimate: \$300-\$500

239

240

ONE-YUAN SILVER COIN, 1934

China, Republican period, Year 23

Dimensions: 1 1/2" (3.8cm) Dia



1-yuan silver dollar coin issued in the 23rd year of the Republic of China, with a sailboat and the Chinese characters '1 yuan' on the obverse, and a head portrait of Sun Yat-sen and the Chinese characters indicating '23rd year of the Republic of China' on the reverse.

Note: 此钱币版式设计优美，雕刻精美，量小，流通量小，存世极为罕见，具有极高的历史价值和学术价值。正方刻有孙中山先生的侧面头像，上书「中华民国二十三年」，背面刻有双桅帆船乘风破浪前进，左右分列「壹圆」币值。就货币设计而言，双帆币是凝聚着千百名工艺技术人员智慧之源和独特审美视角，其品相极佳，整体造型和谐，图案设计精美，再加上两个帆的非常稀少，通过光线的对比及折射，这一点上的银币依然十分珍贵，是一种自然形成的“包浆”。它在市场上较为罕见，因此也吸引了无数藏家竞相收藏，足见其价值地位，具有极高的收藏价值和艺术价值。民国二十三年孙中山像壹圆银币，又称二十三年帆船币，是民国最著名和罕见的银币，正面是孙中山侧面像，上书「中华民国二十三年」。银背面镌刻双桅帆船放洋图，背面两端铸壹圆，中间乘风破浪图案，文字清晰，图案精美，栩栩如生，造型生动，铸造技术精湛，为试铸版，属罕见的钱币之一。

民国23年 双帆船壹圆银币

Estimate: \$200-\$400

ONE-YUAN SILVER COIN, 1914

China, Republican period, Year 3 (1914)

Dimensions: 1 1/2" (3.8cm) Dia



Note: 民国三年(1914年)二月国民政府财政部公布《中华民国国币条例》，整顿统一币制，规定民国三年袁头像银币一元为本位币。重七钱二分，成色银九铜一(后改为89%)，统一流通。由天津造币厂开铸。后南京、广东、武昌、甘肃造币分厂陆续开铸，币值有一元、半元、二角、一角等面值。

241

民国3年 袁大头银币

Estimate: \$200-\$400

HU-PEH PROVINCE 7 MACE AND 2 CANDAREENS, QING DYNASTY

China, Qing dynasty, Guangxu period
Dimensions: 1 1/2" (3.8cm) Dia

Note: 光绪元宝，清朝光绪年间流通的货币之一。由两广总督张之洞率先引进英国铸币机器铸造银元和铜元，之后各省纷纷仿效。共有十九个省局铸造，除中央户部，地方省所铸铜元，皆在其正面上缘镌写省名。光绪元宝是大清光绪年流通大面值货币之首，是我国首批引进海外技术的印发流通货币，对于现今也蕴藏了一定历史意义。

清 湖北省造光绪元宝

Estimate: \$300-\$500



242

SILVER COIN COMMEMORATING THE BIRTH OF REPUBLIC OF CHINA, 1911

China, Republican period, 1911
Dimensions: 1 1/2" (3.8cm) Dia

Note: 中华民国开国纪念币是1911年12月29日经辛亥革命后，光复的17省代表在南京推选孙中山为中华民国临时大总统。民国成立时鼓铸的纪念币。由于币制尚未建立，除四川改铸大汉银币，福建改铸中华元宝外，主要的造币厂，大都仍沿用前清钢模铸造银币，以供流通需要。

1911 中华民国开国纪念币

Estimate: \$500-\$700



243

SILVER SYCEE YUANBAO DEJUFU MARK

China
Dimensions: 342g

With Sichuan Dejufu mark on the top.

四川德聚福十两银锭

Estimate: \$500-\$700



244

SET OF 2 ANCIENT CHINESE COPPER COINS, SONG DYNASTY

China, Northern Song dynasty
Dimensions: 1: 1 3/8" (3.5cm) Dia; 2: 1 5/8" (4.1cm)
Dia

Comprising 1 copper coin with inscribe
'daguantongbao' abd a copper coin with inscribed
'chongningtongbao'. (2pcs)

Note: 大观通宝是北宋徽宗赵佶在大观年间(公元1107年至1110年)所铸造的年号钱。它有小平、折二、折三、折五、折十等多种版式。崇宁通宝是北宋徽宗赵佶崇宁年间(1102-1106年)始铸,年号钱。有崇宁通宝、崇宁重宝和崇宁元宝三种。崇宁通宝当十型,钱文为徽宗亲书瘦金体,所以又其为御书钱。

宋 大观通宝及崇宁通宝各1枚

Estimate: \$800-\$1000



245

ONE THOUSAND CANADIAN DOLLARS BANKNOTE, 1988

Canada, 1975
Dimensions: 6" (15.2cm) L, 2
3/4"(7cm) W

One thousand Canadian dollars
banknote issued by Bank of Canada
in 1988.

1975年发行\$1,000加元纸币

Estimate: \$1100-\$1200



246

SET OF 5 CANADIAN BANKNOTES, 1975

Canada

Dimensions: 6" (15.2cm) L, 2 3/4"(7cm) W

Comprising 5 banknotes of CAD\$100 issued by Bank of Canada in 1975. (5pcs)

1975年发行\$100加元纸币套组

Estimate: \$550-\$600



247



SET OF 6 JAPANESE PAYMENT CERTIFICATES, 20TH CENTURY

Japan, 20th century

Dimensions: 1: 5 3/4" (14.6cm) L, 2 3/4" (7cm) W; 2: 5 1/2" (14cm) L, 3 1/8" (8cm) W

20世纪 日本占港时期发行军票

Estimate: \$100-\$200

248

¥100 RENMINBI BANKNOTE, NO. D4F8111111

China

Dimensions: 7 1/8" (18.1cm) L, 3" (7.6cm) W

第五套人民币¥100面值 编号D4F8111111

Estimate: \$500-\$700



249

**SET OF 3 ¥100 RENMINBI BANKNOTES,
NO. P7D7 444444; R3A2 555555; Q9P5 666666**

Dimensions: 7 1/8" (18.1cm) L, 3" (7.6cm)
W (3)

第五套人民币¥100面值 收藏编号
P7D7444444; R3A2555555; Q9P5666666

Estimate: \$1000-\$1200

250



251

Canada, 1970s

Dimensions: 1: 1 1/4" (3.2cm) Dia; 2&3&4:
1 3/8" (3.5cm) Dia (3)

Comprising 4 Canadian silver jubilee coins.
(4pcs)

1970年代 加拿大银质纪念章4枚

Estimate: \$300-\$500

**SET OF 4 CANADIAN SILVER JUBILEE
COINS, 1970S**



**SET OF 10 OLYMPIC
STERLING SILVER COINS,
ROYAL CANADIAN MINT, 1988**

Canada, 1988

Dimensions: 1 1/2" (3.8cm) Dia (10)

Set of 10 sterling silver coins issued by
the Royal Canadian Mint. (10pcs)

1988 卡尔加里冬季奥运会纪念银币10枚

Estimate: \$600-\$800

252



SET OF 6 OLYMPIC STERLING SILVER COINS, MOSCOW, 1980

Russia, 1980
Dimensions: 1 1/4" (3.2cm) Dia (6)

Set of 6 sterling silver coins for Moscow Olympic Games. (6pcs)

1980 莫斯科奥运会纪念银币6枚

Estimate: \$200-\$400

253

SILVER STERLING COIN IN COMMEMORATION OF THE QUEEN'S SILVER JUBILEE, 1977

Canada, 1977
Dimensions: 1 1/2" (3.8cm) Dia

Silver sterling coin issued by the Canadian Royal Mint in commemoration of the Queen's Silver Jubilee.

1977 加拿大女皇纪念币

Estimate: \$100-\$200

254



SET OF 2 OLYMPIC SILVER DOLLARS, 1983

United States, 1983
Dimensions: 1 1/2" (3.8cm) Dia

Set of 2 Olympic silver dollars issued by the United States Mint in 1983. (2pcs)

1983 美国洛杉矶奥运会纪念银币2枚

Estimate: \$300-\$500

255



256

VINTAGE OMEGA SEAMASTER AUTOMATIC SOLID GOLD DATE



Dimensions: 1 3/8" (3.5cm) Dia

Omega Seamaster Automatic 腕表

Estimate: \$500-\$700



御製
雍正



程遠
於
宇
亦
東
海
之
濱

